

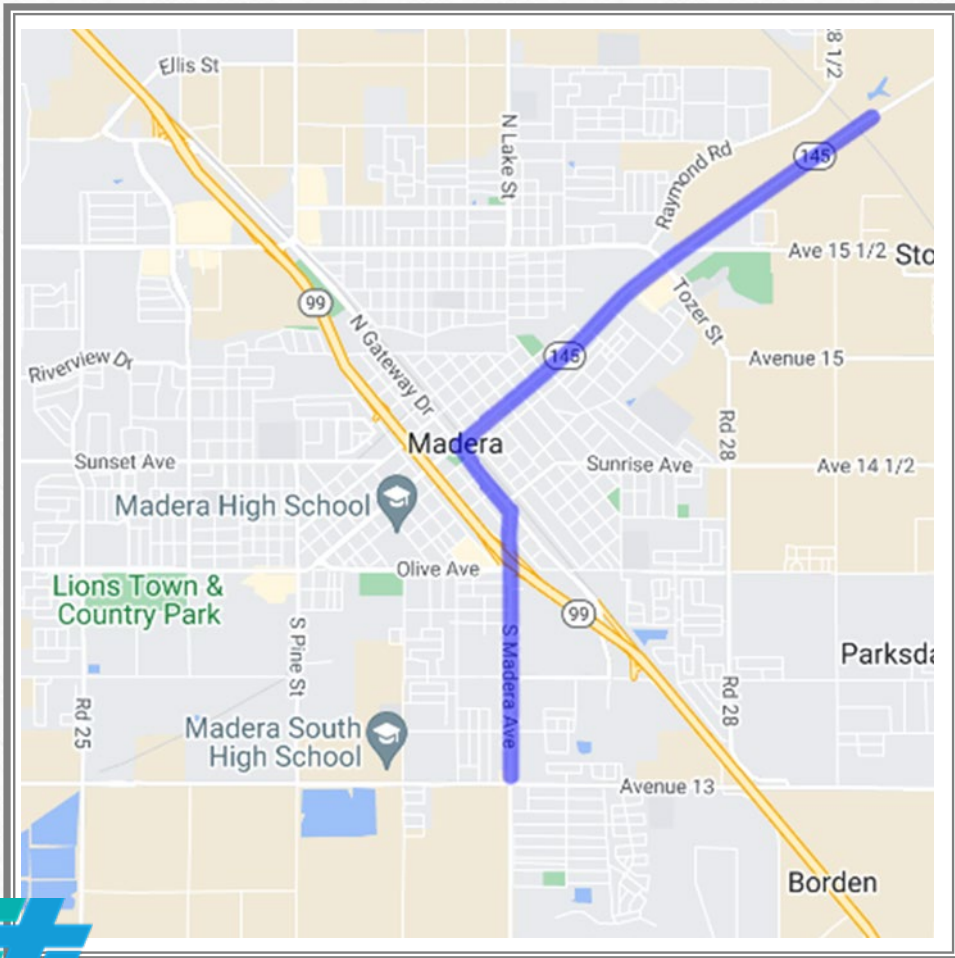
# Downtown Madera CAPM

---

## State Route 145







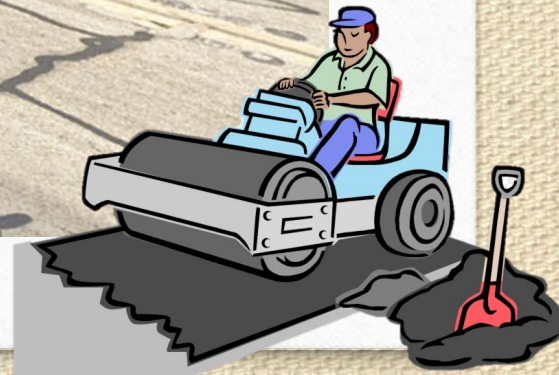
## Project Funding & Cost

- Started out as a maintenance project (\$9,400,000)
- Complete Streets Reservation Funds (\$4,000,000)
- IIJA Climate Resiliency Funds (\$775,000)
- The City of Madera (\$3,000,000)
- Current Project Cost \$24,000,000





10.7 miles of pavement  
preservation







Construct mini-roundabouts at:

- ❖ C street
- ❖ D Street
- ❖ Lake Street





### Road Diet

- ❖ Reduce number of lanes from 4 to 2 in the Downtown area.
- ❖ This will create space for Class II Bike Lanes and transit/pedestrian facilities.





# Project Schedule

Milestone/Duration	Date/Time
Construction Begins	January 2026
Construction Ends	October 2026
Construction Duration	10 months



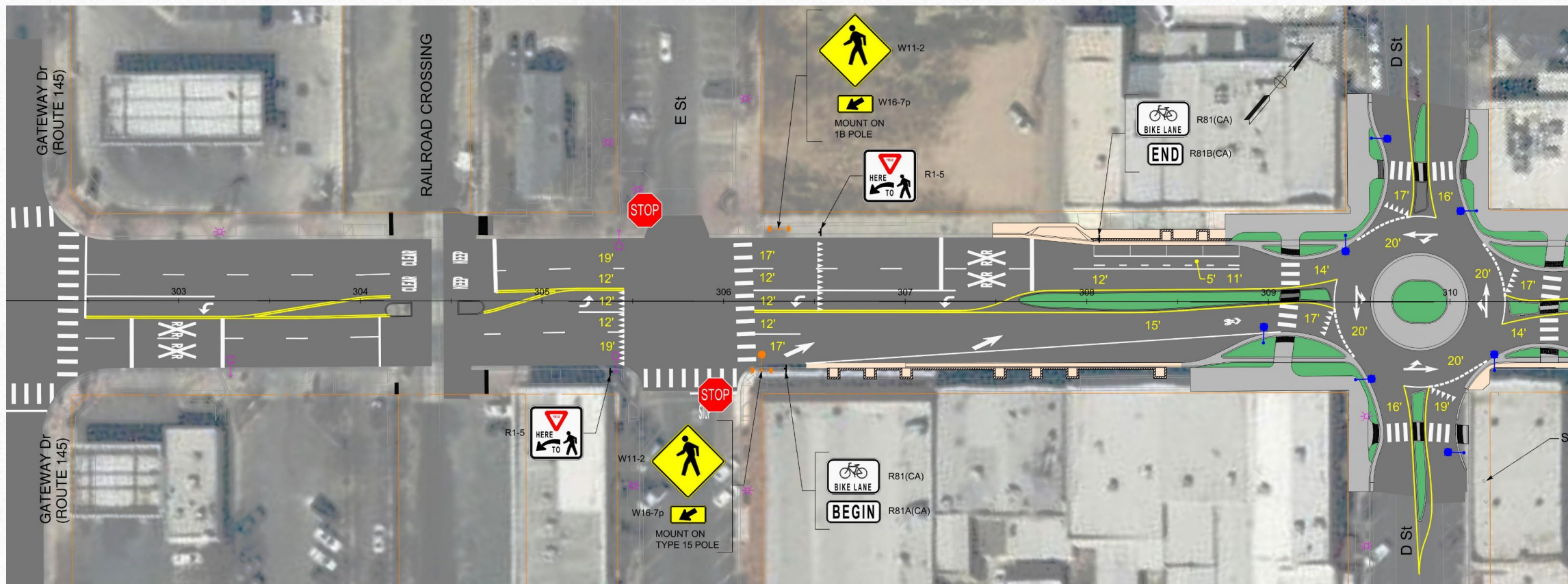


# Project Design

---

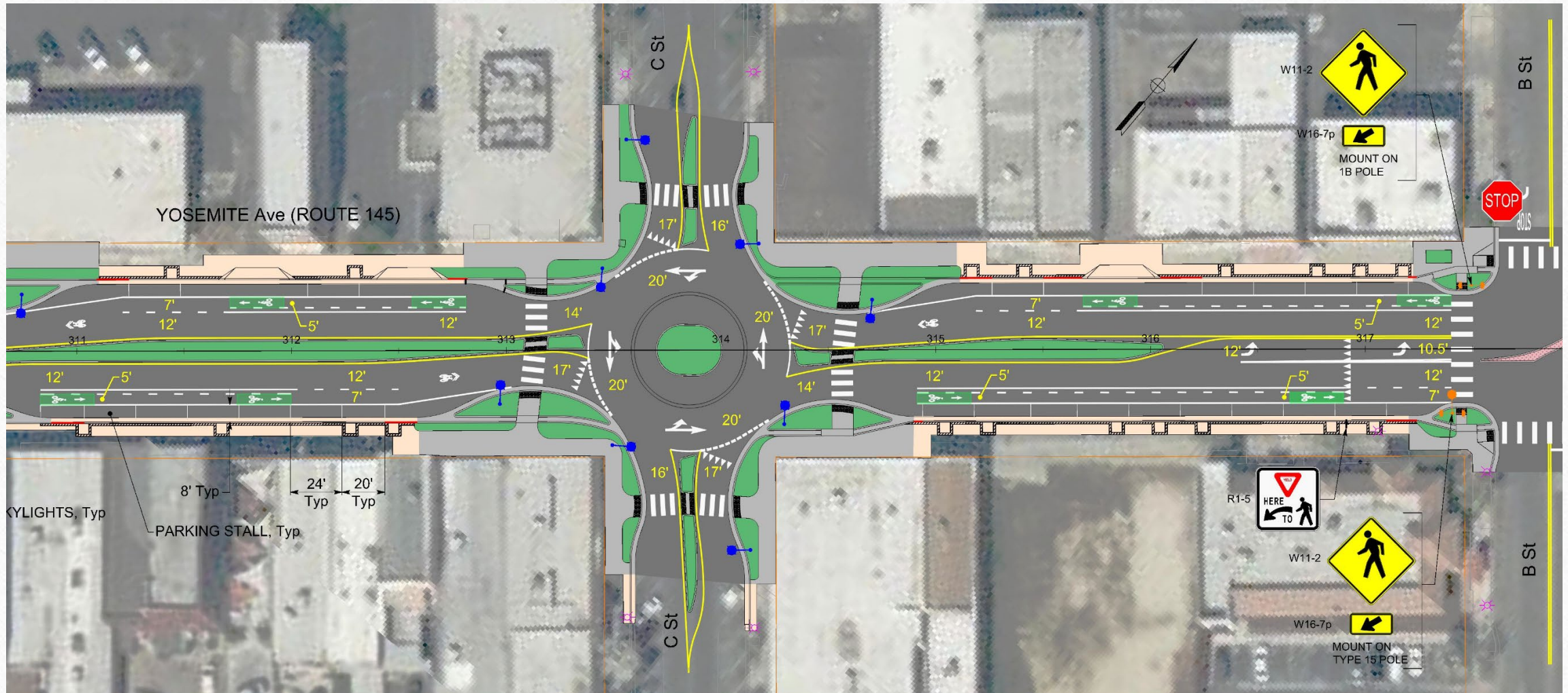






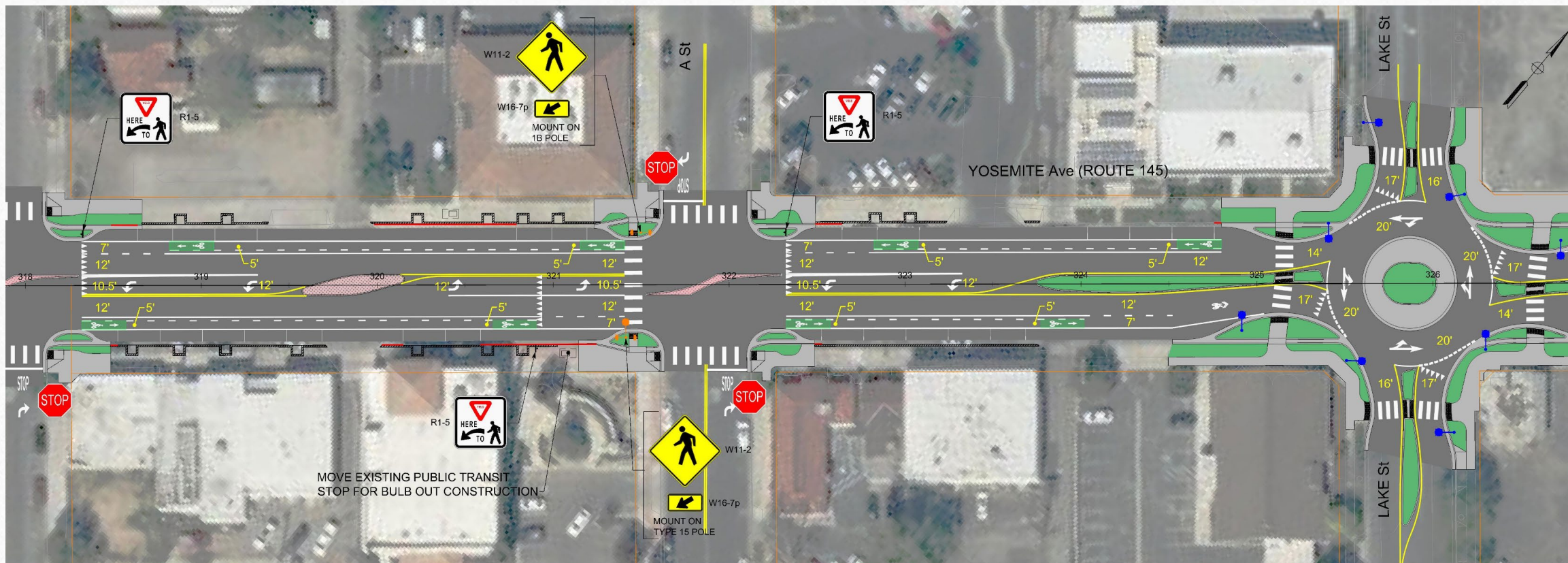
GATEWAY DRIVE TO D STREET





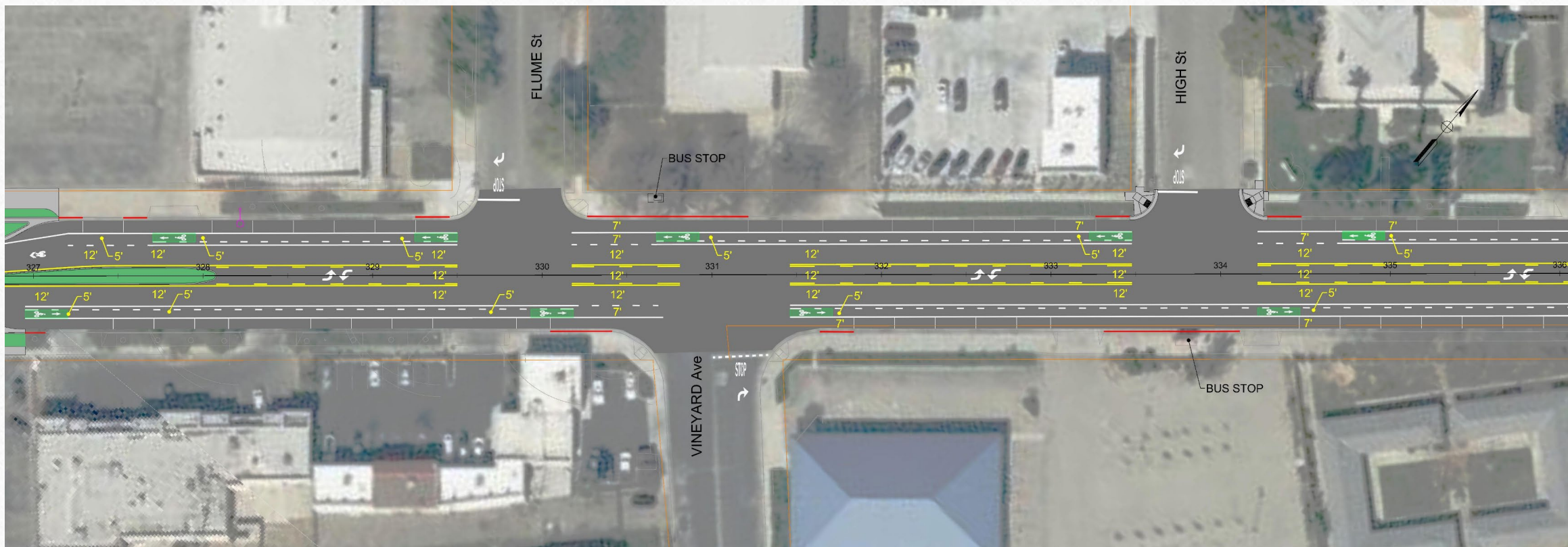
D STREET TO B STREET





B STREET TO LAKE STREET



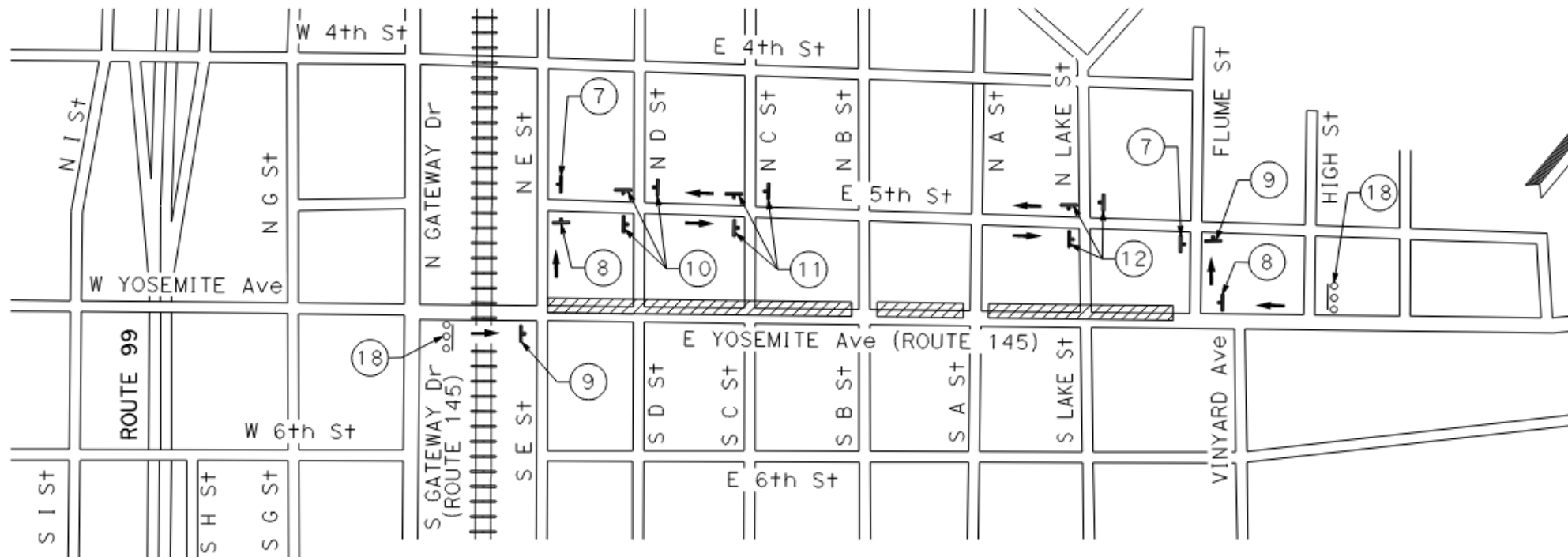


LAKE STREET TO HIGH STREET



The map displays the city of Madera, California, with a focus on its transportation network. Major roads are shown with their respective route numbers (e.g., 99, 145, 198, 199). Local streets are labeled with names like Yosemite Ave, Lincoln Ave, and Olive Ave. The map includes a north arrow and a scale bar. A detailed inset map provides a closer look at the intersection of Route 99 and Route 145, showing the location of the Madera station and surrounding streets. The map also indicates the direction of travel for various roads, such as 'To Merced' and 'To Yosemite'.

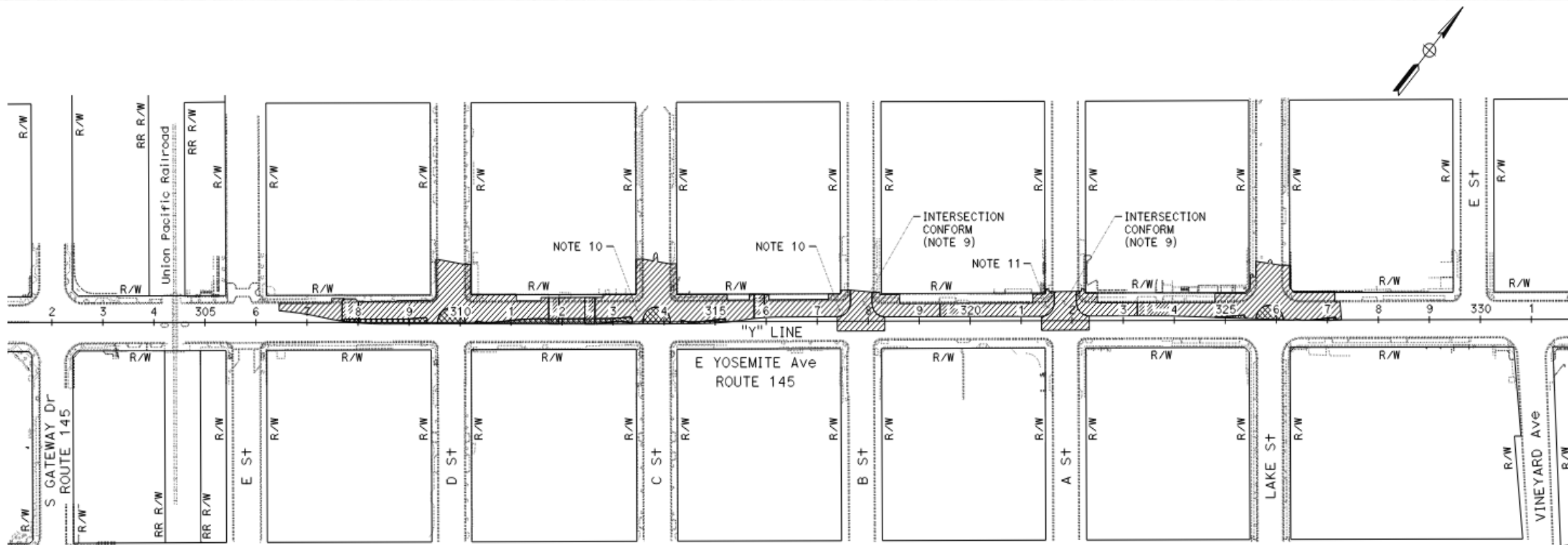




## DETOUR PLAN - STAGE 1

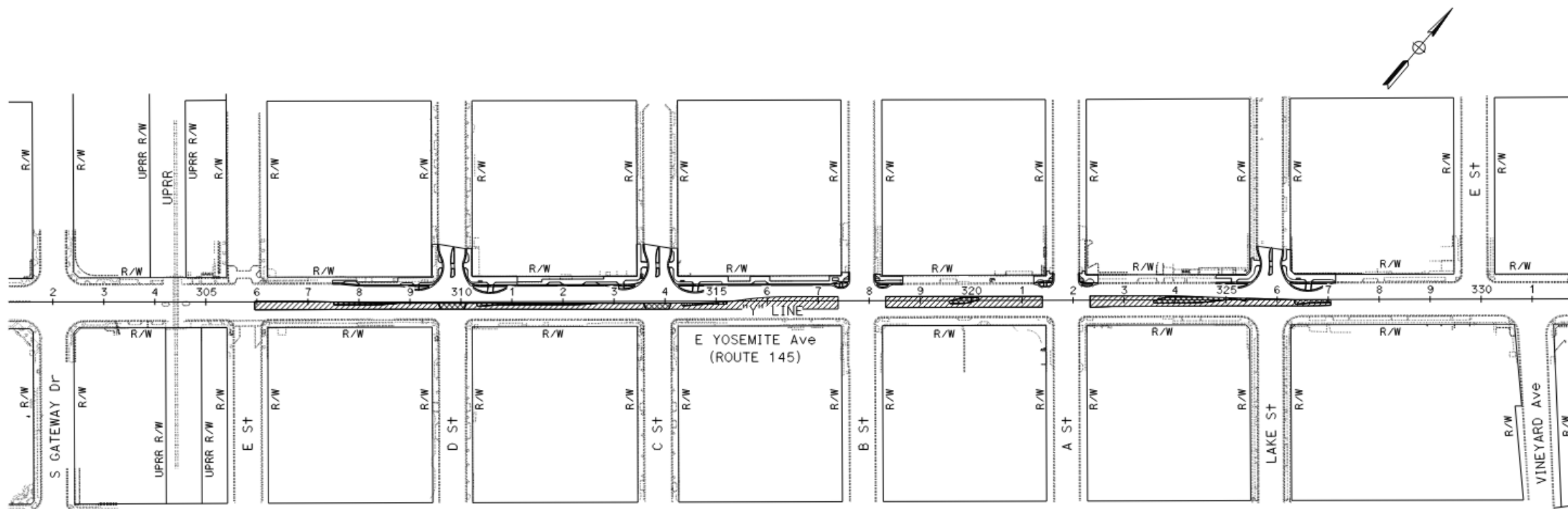
DOWNTOWN LOCAL DETOUR EXAMPLE





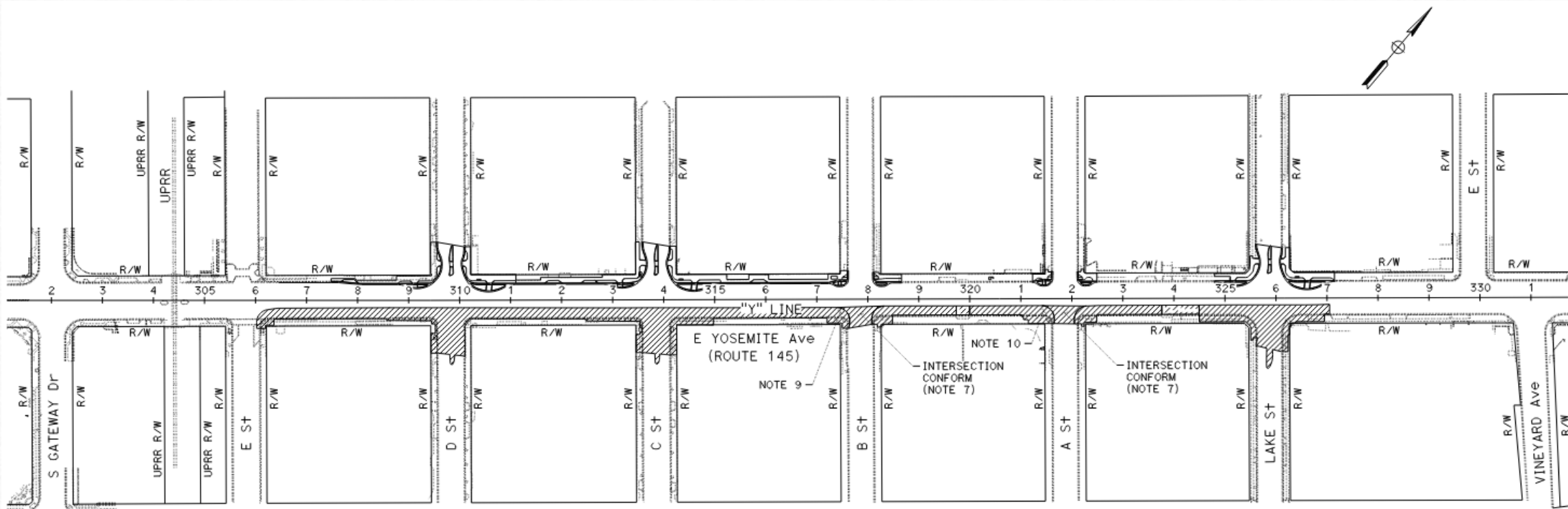
**STAGE CONSTRUCTION PLAN  
(STAGE 1)**





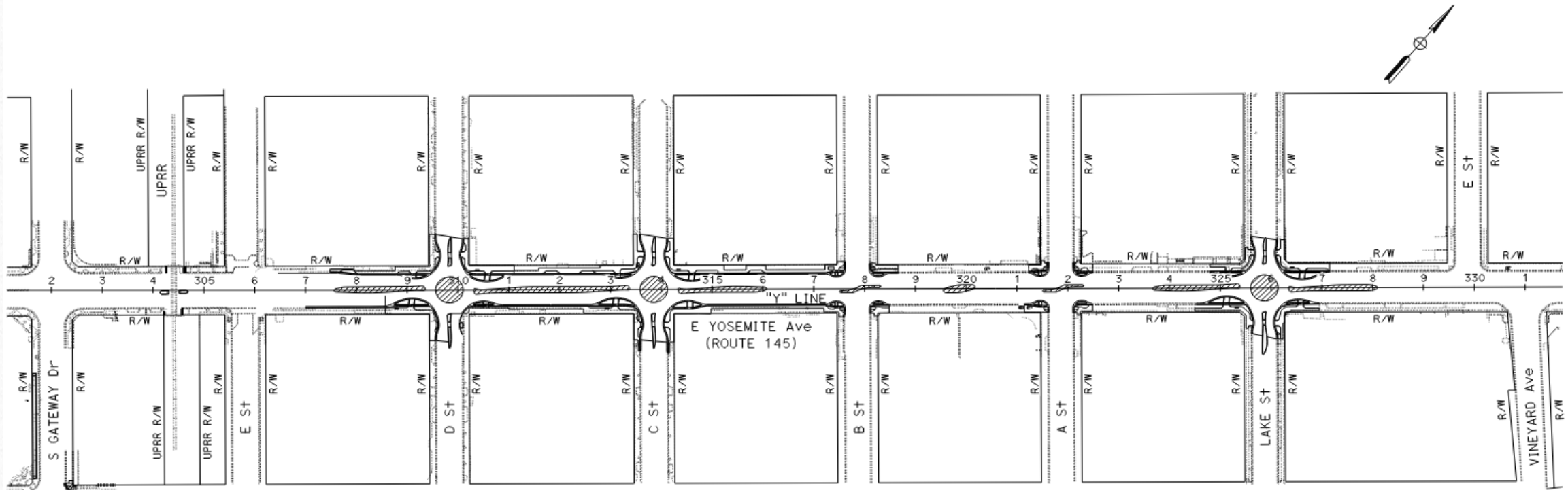
**STAGE CONSTRUCTION PLAN  
(STAGE 2)**





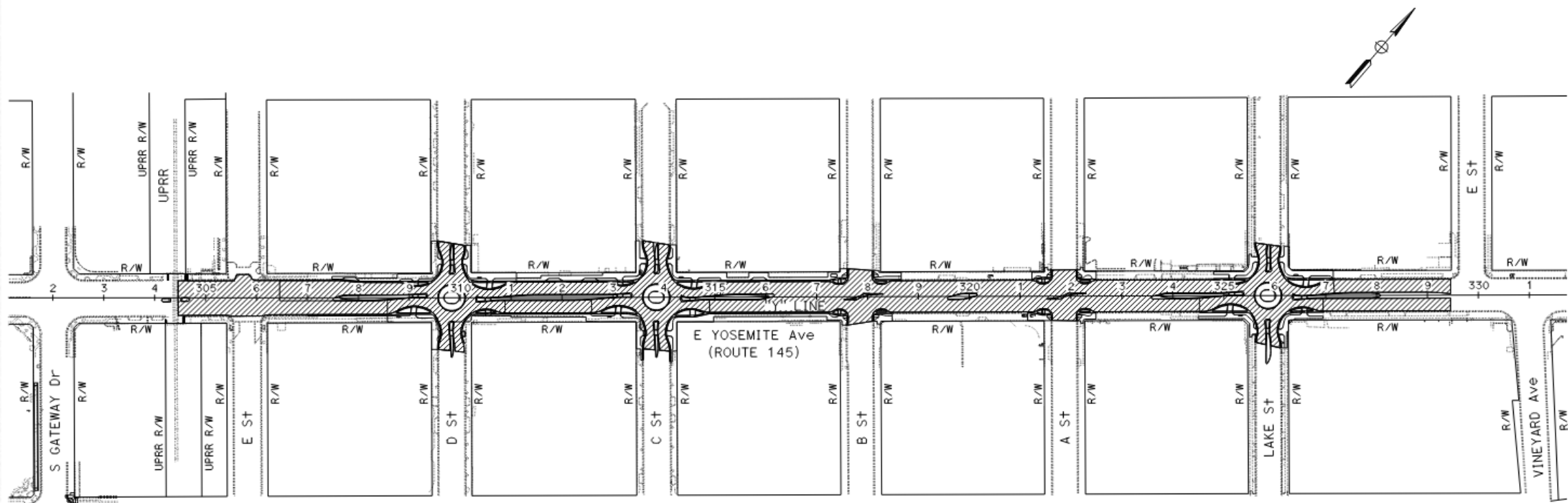
**STAGE CONSTRUCTION PLAN  
(STAGE 3)**





**STAGE CONSTRUCTION PLAN  
(STAGE 4)**





**STAGE CONSTRUCTION PLAN  
(STAGE 5)**









# Questions?

---