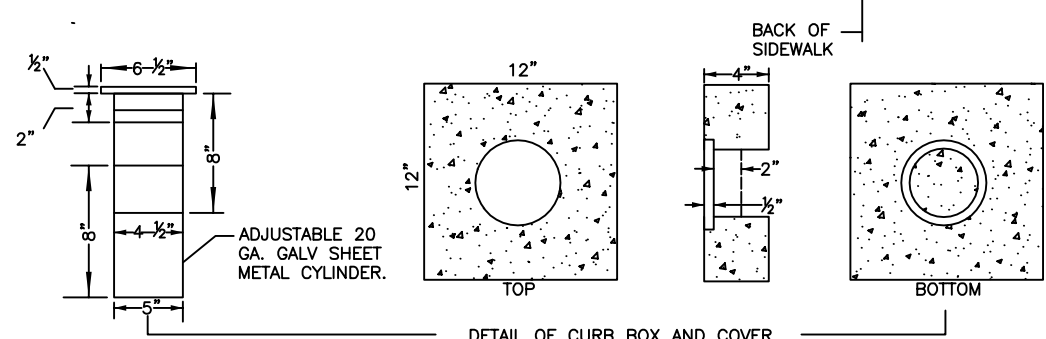
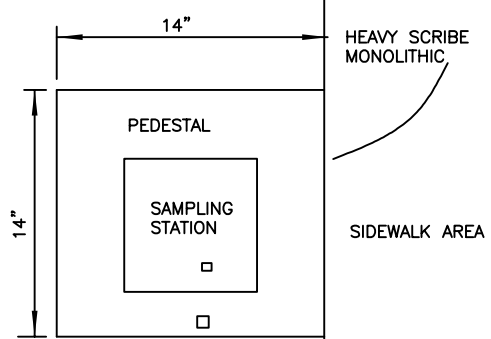
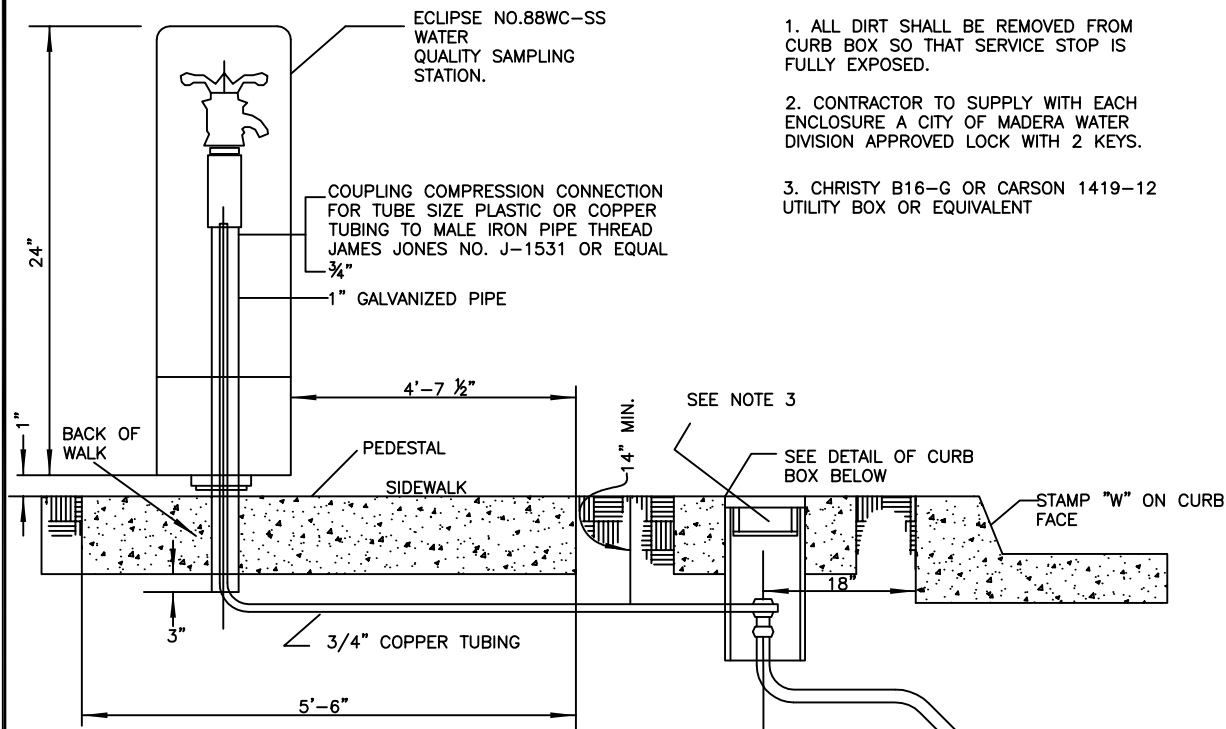


NOTES:

1. ALL DIRT SHALL BE REMOVED FROM CURB BOX SO THAT SERVICE STOP IS FULLY EXPOSED.

2. CONTRACTOR TO SUPPLY WITH EACH ENCLOSURE A CITY OF MADERA WATER DIVISION APPROVED LOCK WITH 2 KEYS.

3. CHRISTY B16-G OR CARSON 1419-12 UTILITY BOX OR EQUIVALENT



WATER SAMPLING STATION

REF. & REV.
MARCH 2005
AUG. 2008
DEC. 2016

CITY OF MADERA
W-11