

City of Madera

Community Facilities District No. 2005-1 (Public Services)

Fiscal Year 2017/18
Annual District Administration Report

27368 Via Industria
Suite 200
Temecula, CA 92590
T 951.587.3500 | 800.755.6864
F 951.587.3510 | 888.326.6864

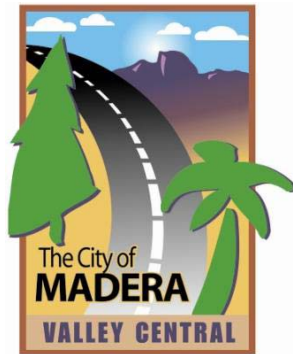
Property Tax Information Line
T. 866.807.6864

www.willdan.com/Financial



ANNUAL DISTRICT ADMINISTRATION REPORT FISCAL YEAR 2017/18

CITY OF MADERA COMMUNITY FACILITIES DISTRICT No. 2005-1 (PUBLIC SERVICES)



Prepared for

CITY OF MADERA
205 W 4th Street
Madera, CA 93637

Prepared by

WILLDAN FINANCIAL SERVICES
27368 Via Industria, Suite 200
Temecula, CA 92590
T. (951) 587-3537 (800) 755-6864
F. (951) 587-3510 (888) 326-6864

Property Tax Information Line
T. 866.807.6864

TABLE OF CONTENTS

This report provides a summary of the financial and administrative information for Community Facilities District No. 2005-1 (Public Services) (“District”) of the City of Madera (“City”) and organized in the following sections:

INTRODUCTION

- A. FORMATION
- B. BOUNDARIES AND DEVELOPMENT SUMMARY
- C. BONDS
- D. FINANCED FACILITIES

I. LEVY SUMMARY OVERVIEW

- A. FISCAL YEAR 2017/18 LEVY AMOUNTS
- B. FISCAL YEAR 2017/18 HANDBILL AMOUNTS

II. FINANCIAL OBLIGATIONS

- A. FISCAL YEAR 2017/18 LEVY COMPONENTS
- B. PREPAYMENT SUMMARY
- C. HISTORICAL BOND CALL SUMMARY

III. DELINQUENCY AND FORECLOSURE STATUS

- A. DELINQUENCY SUMMARY
- B. FORECLOSURE COVENANT
- C. DELINQUENCY MONITORING ACTIONS

IV. SPECIAL TAX LEVY AND METHOD OF APPORTIONMENT

- A. METHOD OF APPORTIONMENT
- B. SPECIAL TAX SPREAD
- C. MAXIMUM AND APPLIED SPECIAL TAX RATES
- D. APPLIED SPECIAL TAX PROGRESSION

EXHIBITS

- EXHIBIT A: FISCAL YEAR 2017/18 CHARGE DETAIL REPORT
- EXHIBIT B: BOUNDARY DIAGRAM
- EXHIBIT C: DELINQUENCY SUMMARY

INTRODUCTION

The information provided in this report is derived primarily from documents developed at the time the District was formed and from data provided by the City or accessed through the City. The information sources include the Rate and Method of apportionment, annual budget, debt service schedule(s), fund balance(s) and special tax/assessment delinquency data. The development status, prepayments and historical information were accessed through the City and/or the developer and are maintained by Willdan Financial Services.

The Mello-Roos Community Facilities Act (“Act”) of 1982 came about as a response to the lack of adequate financing for public capital facilities and services in the post-Proposition 13 era. State Legislators Mello and Roos sponsored this Bill, which was enacted into law by the California Legislature and is now Sections 53311 through 53363 of the California Government Code. The Act authorizes a local governmental agency, such as a school district or city, to form a Community Facilities District (“CFD”) or (“District”) within a defined set of boundaries for the purposes of providing public facilities and services. A CFD is formed for financing purposes only, and is governed by the agency that formed it.

A. FORMATION

On November 16, 2005, the City formed the District by the adoption of Resolution No. 05-334. The qualified electors within the District approved the levy of the special tax in accordance with the rate and method of special tax.

B. BOUNDARIES AND DEVELOPMENT SUMMARY

The District boundaries at formation were composed of sixteen parcels, spread throughout four noncontiguous areas. Nine of those parcels are located in a triangular shaped area bordered on the east by Road 28, on the north by Avenue 14, and on the southwest by the Southern Pacific Co. railroad tracks. One parcel is located west of Highway 145, bounded on the north by Avenue 13 and on the west by Road 26 1/2. Two of the parcels are located west of Granada Drive, being bound on the north by Cleveland Avenue. The remaining four parcels are located east of North Lake St., bounded on the north by B. Ellis St., and on the east by Merced St. Since District formation, the original parcels have subdivided. The boundaries of the District include all properties and parcels on which special taxes may be levied to pay for the costs and expenses of the services.

There are currently nine hundred fifty-one (951) developed parcels located within the boundaries of the District which are subject to Special Tax.

C. BONDS

There are currently no bonds issued for this District.

D. FINANCED FACILITIES

It is the intention of City Council to finance certain services that are in addition to those provided in or required for the territory within the District and will not be replacing services already available. The following is a general description of services provided by the District:

Police protection services and fire protection and suppression services, including but not limited to (i) the costs of contracting services, (ii) equipment, vehicles, ambulances and paramedics, fire apparatus, supplies, (iii) the salaries and benefits of City staff that directly provide police protection services and fire protection and suppression services and other services as defined herein, respectively, and (iv) City overhead costs associated with providing such services within the District. On each July 1 following the Base Year the increases attributed to salaries and benefits shall be calculated and limited to the increase based on the Annual Escalation Factor as provided in the Rate and Method of Apportionment of the Special Taxes. The Special Tax will finance services that are in addition to those provided in or required for the territory within the District and will not be replacing services already available. The Special Tax provides only partial funding for police and fire services.

Park maintenance of the City of Madera, including but not limited to, labor, material, administration, personnel, equipment, and utilities necessary to maintain park improvements within the District, including recreational facilities, trees, plant material, sod, irrigation systems, sidewalks, drainage facilities, weed control and other abatements, public restrooms, signs, monuments, and associated appurtenant facilities located within the District. Storm drainage system maintenance and operations of the City of Madera, including but not limited to, labor, material, administration, personnel, equipment, and utilities necessary to maintain and operate the storm drainage system within the District.

I. LEVY SUMMARY OVERVIEW

A. FISCAL YEAR 2017/18 LEVY AMOUNTS

The following table summarizes the amounts levied (including handbilled/direct billed charges) for Fiscal Year 2017/18 for the District.

| Parcel Count | Charge Amount |
|--------------|---------------|
| 939 | \$357,318.94 |

B. FISCAL YEAR 2017/18 HANDBILL AMOUNTS

The following table summarizes the amounts billed directly to the property owner rather than placed on the Secured Property Tax Roll, due to the tax exempt status Fiscal Year 2017/18 for the District.

| Parcel Count | Charge Amount |
|--------------|---------------|
| 0 | \$0.00 |

II. FINANCIAL OBLIGATIONS

A. FISCAL YEAR 2017/18 LEVY COMPONENTS

The following table summarizes the financial obligations of the District.

| Uses of Funds | Amount |
|---|---------------------|
| Services | \$356,735.02 |
| Administrative Costs | 583.92 |
| Adjustments Applied to the Levy – Addition/(Credit) | 0.00 |
| Total Charge Amount Levied ⁽¹⁾ | \$357,318.94 |

⁽¹⁾ Slight variance to actual "Charge Amount" in Section (I)(A) above due to rounding.

B. PREPAYMENTS

For Fiscal Year 2016/17, there were no parcels that prepaid their special tax/assessment obligations.

| APN | Prepayment Total ⁽¹⁾ |
|-------------------------|---------------------------------|
| N/A | \$0.00 |
| Prepayment Total | \$0.00 |

⁽¹⁾ Total prepayment amount including but not limited to, reserve credit, redemption amount and premium, investment earnings and administrative fees.

C. HISTORICAL BOND CALL SUMMARY

There are no bonds issued for this District.

| Date of Call | Amount | Source of Funds |
|--------------------------------|---------------|-----------------|
| N/A | \$0.00 | N/A |
| Total Bond Call to Date | \$0.00 | |

III. DELINQUENCY AND FORECLOSURE STATUS

A. DELINQUENCY SUMMARY

The following table summarizes delinquency summary for the most recent fiscal year and the cumulative for all years with delinquencies as of May 16, 2017.

| Summary for Most Recent Fiscal Year | | Cumulative Summary for All Years with Delinquencies | |
|-------------------------------------|-------|---|-------|
| \$1,257.78 | 0.38% | \$7,620.78 | 0.64% |

FOR A MORE COMPREHENSIVE SUMMARY, PLEASE SEE EXHIBIT C OF THIS REPORT.

B. FORECLOSURE COVENANT

The District is not bonded, therefore; there is no foreclosure covenant for the District.

C. DELINQUENCY MANAGEMENT ACTIONS

Willdan Financial Services has taken the initial steps toward foreclosure proceedings or reducing delinquencies by performing the following Delinquency Monitoring Actions since July 1, 2016.

| Action(s) | Date Performed | Number of Parcels |
|-----------------|----------------|-------------------|
| Reminder Letter | June 21, 2017 | 10 |

IV. SPECIAL TAX LEVY AND METHOD OF APPORTIONMENT

The methodology employed to calculate and apportion the special tax is in accordance with the document entitled Rate and Method of Apportionment (“RMA”). The RMA is hereby referenced and summarized but not included in this report, however the official document can be requested and provided by the City’s special tax administrator Willdan Financial Services.

A. RATE AND METHOD OF APPORTIONMENT

Pursuant to Section D of the Rate of Method of Apportionment, commencing with Fiscal Year 2006/07 and for each following fiscal year, the District Administrator shall calculate the Special Tax Requirement based on the definitions in Section A

of the Rate and Method of Apportionment and levy the Special Tax as follows until the amount of the Special Tax levied equals the Special Tax Requirement.

(FOR DETAILED INFORMATION OF THE SPECIAL TAX REQUIREMENT, PLEASE REFER TO SECTION (II) FINANCIAL OBLIGATIONS ABOVE).

First, the Special Tax shall be levied each Fiscal Year on each Assessor's Parcel of Developed Property Proportionately between Developed Single- Family Residence and Developed Multi- Family Residence up to 100% of the applicable Maximum Special Tax.

Second, if the Special Tax Requirement has not been satisfied by the first step, then the Special Tax shall be levied each Fiscal Year on each Assessor's Parcel of Entitled Property up to 100% of the applicable Maximum Special Tax for Entitled Property.

B. SPECIAL TAX SPREAD

The following table summarizes the number of parcels in each land use classification as well as the Applied Special Tax Rate for each classification.

| Land Use Classification | Taxable Units | No. of Parcels | 2017/18 Applied Special Tax Rate per Unit | 2017/18 Dollars Levied |
|-------------------------|---------------|----------------|---|------------------------|
| 1 – Single Family | 685 | 685 | \$435.14 | \$298,070.90 |
| 2 – Entitled | 266 | 266 | \$233.26 | 59,248.04 |
| Total | | 951 | | \$357,318.94 |

C. MAXIMUM ASSIGNED AND APPLIED SPECIAL TAX RATES

The following table summarizes the percent of the Applied Special Tax to the Maximum Assigned Special Tax rate.

| Land Use Classification | 2017/18 Maximum Assigned Special Tax Rate ⁽¹⁾ per Unit | 2017/18 Applied Special Tax Rate per Unit | Percent of Maximum |
|-------------------------|---|---|--------------------|
| 1 – Single Family | \$435.15 | \$435.14 | 100.00% |
| 2 – Entitled | \$233.26 | \$233.26 | 100.00% |

(1) Based on the Rate and Method of Apportionment, the maximum assigned special tax rates have been escalated by the greater of the increase in the annual percentage change of the All Urban Consumers Consumer Price Index (CPI) or three percent (3%).

D. APPLIED SPECIAL TAX PROGRESSION

The following table summarizes the percent change of Fiscal Year 2017/18 Applied Special Tax Rate as compared to Fiscal Year 2016/17 Applied Special Tax Rate.

| Land Use Classification | 2017/18 Applied Special Tax Rate per Unit | 2016/17 Applied Special Tax Rate per Unit | Percent Change from 2016/17 |
|-------------------------|---|---|-----------------------------|
| 1 – Single Family | \$435.14 | \$419.26 | 3.79% |
| 2 – Entitled | \$233.26 | \$223.78 | 4.24% |

EXHIBIT A

CITY OF MADERA COMMUNITY FACILITIES DISTRICT NO. 2005-1 (PUBLIC SERVICES)

Fiscal Year 2017/18 Charge Detail Report

City of Madera
Community Facilities District No. 2005-1 (Public Services)
Charge Detail Report (Sorted by Assessor's Parcel Number)

| Assessor's Parcel Number | Situs Address | Land Assessed Value | Structure Assessed Value | Total Assessed Value | Max Tax | 2017/18 Charge |
|--------------------------|-------------------|---------------------|--------------------------|----------------------|----------|----------------|
| 005-014-003-000 | 785 FRESNO ST | \$21,643 | \$76,514 | \$98,157 | \$435.15 | \$435.14 |
| 005-014-004-000 | 771 FRESNO ST | 32,466 | 64,934 | 97,400 | 435.15 | 435.14 |
| 005-014-005-000 | 759 FRESNO ST | 63,666 | 129,437 | 193,103 | 435.15 | 435.14 |
| 005-014-006-000 | 1011 RIVERSIDE DR | 22,242 | 86,749 | 108,991 | 435.15 | 435.14 |
| 005-014-007-000 | 1015 RIVERSIDE DR | 22,076 | 67,336 | 89,412 | 435.15 | 435.14 |
| 005-320-001-000 | 1994 EAGLE DR | 35,000 | 147,000 | 182,000 | 435.15 | 435.14 |
| 005-320-002-000 | 1986 EAGLE DR | 21,219 | 128,384 | 149,603 | 435.15 | 435.14 |
| 005-320-003-000 | 1974 EAGLE DR | 21,219 | 115,651 | 136,870 | 435.15 | 435.14 |
| 005-320-004-000 | 1966 EAGLE DR | 21,124 | 116,186 | 137,310 | 435.15 | 435.14 |
| 005-320-005-000 | 1958 EAGLE DR | 21,124 | 126,748 | 147,872 | 435.15 | 435.14 |
| 005-320-006-000 | 1950 EAGLE DR | 21,124 | 145,761 | 166,885 | 435.15 | 435.14 |
| 005-320-007-000 | 1930 EAGLE DR | 21,124 | 145,761 | 166,885 | 435.15 | 435.14 |
| 005-320-008-000 | 1922 EAGLE DR | 21,124 | 157,379 | 178,503 | 435.15 | 435.14 |
| 005-320-009-000 | 1914 EAGLE DR | 25,888 | 154,193 | 180,081 | 435.15 | 435.14 |
| 005-320-010-000 | 1906 EAGLE DR | 31,066 | 149,119 | 180,185 | 435.15 | 435.14 |
| 005-320-011-000 | 1902 EAGLE DR | 20,711 | 144,977 | 165,688 | 435.15 | 435.14 |
| 005-320-012-000 | 1901 EAGLE DR | 31,066 | 134,621 | 165,687 | 435.15 | 435.14 |
| 005-320-013-000 | 1907 EAGLE DR | 33,137 | 0 | 33,137 | 435.15 | 435.14 |
| 005-320-014-000 | 1915 EAGLE DR | 33,137 | 137,000 | 170,137 | 435.15 | 435.14 |
| 005-320-015-000 | 1923 EAGLE DR | 33,137 | 146,880 | 180,017 | 435.15 | 435.14 |
| 005-320-016-000 | 1931 EAGLE DR | 33,137 | 137,000 | 170,137 | 435.15 | 435.14 |
| 005-320-017-000 | 1951 EAGLE DR | 33,137 | 146,880 | 180,017 | 435.15 | 435.14 |
| 005-320-018-000 | 1959 EAGLE DR | 33,137 | 139,332 | 172,469 | 435.15 | 435.14 |
| 005-320-019-000 | 1967 EAGLE DR | 33,137 | 146,880 | 180,017 | 435.15 | 435.14 |
| 005-320-020-000 | 1975 EAGLE DR | 33,137 | 139,332 | 172,469 | 435.15 | 435.14 |
| 005-320-021-000 | 1987 EAGLE DR | 33,137 | 146,880 | 180,017 | 435.15 | 435.14 |
| 005-320-022-000 | 1995 EAGLE DR | 33,137 | 139,332 | 172,469 | 435.15 | 435.14 |
| 005-320-023-000 | 1105 ROBIN WAY | 8,830 | 0 | 8,830 | 233.26 | 233.26 |
| 005-320-024-000 | 1117 ROBIN WAY | 8,830 | 0 | 8,830 | 233.26 | 233.26 |
| 005-320-025-000 | 1129 ROBIN WAY | 8,830 | 0 | 8,830 | 233.26 | 233.26 |
| 005-320-026-000 | 1141 ROBIN WAY | 8,830 | 0 | 8,830 | 233.26 | 233.26 |
| 005-320-027-000 | 1153 ROBIN WAY | 8,830 | 0 | 8,830 | 233.26 | 233.26 |

City of Madera
Community Facilities District No. 2005-1 (Public Services)
Charge Detail Report (Sorted by Assessor's Parcel Number)

| Assessor's Parcel Number | Situs Address | Land Assessed Value | Structure Assessed Value | Total Assessed Value | Max Tax | 2017/18 Charge |
|--------------------------|----------------------|---------------------|--------------------------|----------------------|---------|----------------|
| 005-320-028-000 | 1980 BLUE SKY LN | 8,830 | 0 | 8,830 | 233.26 | 233.26 |
| 005-320-029-000 | 1972 BLUE SKY LN | 8,830 | 0 | 8,830 | 233.26 | 233.26 |
| 005-320-030-000 | 1964 BLUE SKY LN | 8,830 | 0 | 8,830 | 233.26 | 233.26 |
| 005-320-031-000 | 1956 BLUE SKY LN | 8,830 | 0 | 8,830 | 233.26 | 233.26 |
| 005-320-032-000 | 1948 BLUE SKY LN | 8,830 | 0 | 8,830 | 233.26 | 233.26 |
| 005-320-033-000 | 1943 BLUE SKY LN | 8,830 | 0 | 8,830 | 233.26 | 233.26 |
| 005-320-034-000 | 1951 BLUE SKY LN | 8,830 | 0 | 8,830 | 233.26 | 233.26 |
| 005-320-035-000 | 1959 BLUE SKY LN | 8,830 | 0 | 8,830 | 233.26 | 233.26 |
| 005-320-036-000 | 1967 BLUE SKY LN | 8,830 | 0 | 8,830 | 233.26 | 233.26 |
| 005-320-037-000 | 1165 SPARROW WAY | 8,830 | 0 | 8,830 | 233.26 | 233.26 |
| 005-320-038-000 | 1177 SPARROW WAY | 8,830 | 0 | 8,830 | 233.26 | 233.26 |
| 005-320-039-000 | 1189 SPARROW WAY | 8,830 | 0 | 8,830 | 233.26 | 233.26 |
| 005-320-040-000 | 1197 SPARROW WAY | 8,830 | 0 | 8,830 | 233.26 | 233.26 |
| 005-320-041-000 | 1944 MEADOW LARK WAY | 8,830 | 0 | 8,830 | 233.26 | 233.26 |
| 005-320-042-000 | 1952 MEADOW LARK WAY | 8,830 | 0 | 8,830 | 233.26 | 233.26 |
| 005-320-043-000 | 1960 MEADOW LARK WAY | 8,830 | 0 | 8,830 | 233.26 | 233.26 |
| 005-320-044-000 | 1949 MEADOW LARK WAY | 8,830 | 0 | 8,830 | 233.26 | 233.26 |
| 005-320-045-000 | 1941 MEADOW LARK WAY | 8,830 | 0 | 8,830 | 233.26 | 233.26 |
| 005-320-046-000 | 1925 MEADOW LARK WAY | 8,830 | 81,329 | 90,159 | 435.15 | 435.14 |
| 005-320-047-000 | 1917 MEADOW LARK WAY | 8,830 | 81,329 | 90,159 | 435.15 | 435.14 |
| 005-320-048-000 | 1909 MEADOW LARK WAY | 8,830 | 81,329 | 90,159 | 435.15 | 435.14 |
| 005-320-049-000 | 1901 MEADOW LARK WAY | 8,830 | 81,329 | 90,159 | 435.15 | 435.14 |
| 005-320-050-000 | 1904 MEADOW LARK WAY | 8,830 | 0 | 8,830 | 233.26 | 233.26 |
| 005-320-051-000 | 1912 MEADOW LARK WAY | 8,830 | 0 | 8,830 | 233.26 | 233.26 |
| 005-320-052-000 | 1920 MEADOW LARK WAY | 8,830 | 0 | 8,830 | 233.26 | 233.26 |
| 005-320-053-000 | 1927 BLUE SKY LN | 8,830 | 0 | 8,830 | 233.26 | 233.26 |
| 005-320-054-000 | 1919 BLUE SKY LN | 8,830 | 0 | 8,830 | 233.26 | 233.26 |
| 005-320-055-000 | 1911 BLUE SKY LN | 8,830 | 0 | 8,830 | 233.26 | 233.26 |
| 005-320-056-000 | 1903 BLUE SKY LN | 8,830 | 0 | 8,830 | 233.26 | 233.26 |
| 005-320-057-000 | 1908 BLUE SKY LN | 8,830 | 0 | 8,830 | 233.26 | 233.26 |
| 005-320-058-000 | 1916 BLUE SKY LN | 8,830 | 0 | 8,830 | 233.26 | 233.26 |
| 005-320-059-000 | 1924 BLUE SKY LN | 8,830 | 0 | 8,830 | 233.26 | 233.26 |

City of Madera
Community Facilities District No. 2005-1 (Public Services)
Charge Detail Report (Sorted by Assessor's Parcel Number)

| Assessor's Parcel Number | Situs Address | Land Assessed Value | Structure Assessed Value | Total Assessed Value | Max Tax | 2017/18 Charge |
|--------------------------|-------------------|---------------------|--------------------------|----------------------|---------|----------------|
| 005-320-060-000 | 1932 BLUE SKY LN | 8,830 | 0 | 8,830 | 233.26 | 233.26 |
| 009-580-001-000 | 2699 PEAR TREE DR | 60,361 | 105,633 | 165,994 | 435.15 | 435.14 |
| 009-580-002-000 | 2713 PEAR TREE DR | 37,134 | 114,590 | 151,724 | 435.15 | 435.14 |
| 009-580-003-000 | 2727 PEAR TREE DR | 68,360 | 111,672 | 180,032 | 435.15 | 435.14 |
| 009-580-004-000 | 1108 S BERRY DR | 37,134 | 111,937 | 149,071 | 435.15 | 435.14 |
| 009-580-005-000 | 1116 S BERRY DR | 57,951 | 90,523 | 148,474 | 435.15 | 435.14 |
| 009-580-006-000 | 1120 S BERRY DR | 69,129 | 95,007 | 164,136 | 435.15 | 435.14 |
| 009-580-007-000 | 1124 S BERRY DR | 56,100 | 147,900 | 204,000 | 435.15 | 435.14 |
| 009-580-008-000 | 1128 S BERRY DR | 42,439 | 144,247 | 186,686 | 435.15 | 435.14 |
| 009-580-009-000 | 1132 S BERRY DR | 60,713 | 106,977 | 167,690 | 435.15 | 435.14 |
| 009-580-010-000 | 1136 S BERRY DR | 43,288 | 124,458 | 167,746 | 435.15 | 435.14 |
| 009-580-011-000 | 1140 S BERRY DR | 42,439 | 127,270 | 169,709 | 435.15 | 435.14 |
| 009-580-012-000 | 1144 S BERRY DR | 42,439 | 111,407 | 153,846 | 435.15 | 435.14 |
| 009-580-013-000 | 1150 S BERRY DR | 42,439 | 125,200 | 167,639 | 435.15 | 435.14 |
| 009-580-021-000 | 2644 PEANUT DR | 50,254 | 125,919 | 176,173 | 435.15 | 435.14 |
| 009-580-022-000 | 2658 PEANUT DR | 74,758 | 79,432 | 154,190 | 435.15 | 435.14 |
| 009-580-023-000 | 2672 PEANUT DR | 47,529 | 132,029 | 179,558 | 435.15 | 435.14 |
| 009-580-024-000 | 2686 PEANUT DR | 51,777 | 126,855 | 178,632 | 435.15 | 435.14 |
| 009-580-025-000 | 2690 PEANUT DR | 66,782 | 88,119 | 154,901 | 435.15 | 435.14 |
| 009-580-026-000 | 2704 PEANUT DR | 60,000 | 171,000 | 231,000 | 435.15 | 435.14 |
| 009-580-027-000 | 2703 PEANUT DR | 68,963 | 102,538 | 171,501 | 435.15 | 435.14 |
| 009-580-028-000 | 2689 PEANUT DR | 31,830 | 111,407 | 143,237 | 435.15 | 435.14 |
| 009-580-029-000 | 2685 PEANUT DR | 62,694 | 78,327 | 141,021 | 435.15 | 435.14 |
| 009-580-030-000 | 2671 PEANUT DR | 60,713 | 68,329 | 129,042 | 435.15 | 435.14 |
| 009-580-031-000 | 2657 PEANUT DR | 64,670 | 77,573 | 142,243 | 435.15 | 435.14 |
| 009-580-032-000 | 2643 PEANUT DR | 66,730 | 85,192 | 151,922 | 435.15 | 435.14 |
| 009-580-033-000 | 2648 PEAR TREE DR | 56,954 | 147,048 | 204,002 | 435.15 | 435.14 |
| 009-580-034-000 | 2662 PEAR TREE DR | 55,860 | 122,892 | 178,752 | 435.15 | 435.14 |
| 009-580-035-000 | 2676 PEAR TREE DR | 66,730 | 111,218 | 177,948 | 435.15 | 435.14 |
| 009-580-036-000 | 2688 PEAR TREE DR | 66,730 | 122,284 | 189,014 | 435.15 | 435.14 |
| 009-580-037-000 | 2698 PEAR TREE DR | 46,599 | 124,266 | 170,865 | 435.15 | 435.14 |
| 009-580-038-000 | 2712 PEAR TREE DR | 63,615 | 85,015 | 148,630 | 435.15 | 435.14 |

City of Madera
Community Facilities District No. 2005-1 (Public Services)
Charge Detail Report (Sorted by Assessor's Parcel Number)

| Assessor's Parcel Number | Situs Address | Land Assessed Value | Structure Assessed Value | Total Assessed Value | Max Tax | 2017/18 Charge |
|--------------------------|---------------------|---------------------|--------------------------|----------------------|---------|----------------|
| 009-580-039-000 | 2663 PEAR TREE DR | 61,579 | 93,910 | 155,489 | 435.15 | 435.14 |
| 009-580-040-000 | 2649 PEAR TREE DR | 66,730 | 133,407 | 200,137 | 435.15 | 435.14 |
| 009-580-041-000 | 2635 PEAR TREE DR | 69,340 | 94,630 | 163,970 | 435.15 | 435.14 |
| 009-580-042-000 | 2621 PEAR TREE DR | 66,730 | 136,188 | 202,918 | 435.15 | 435.14 |
| 009-580-043-000 | 1109 TOSCHI DR | 55,606 | 88,417 | 144,023 | 435.15 | 435.14 |
| 009-580-044-000 | 1115 TOSCHI DR | 71,665 | 75,204 | 146,869 | 435.15 | 435.14 |
| 009-580-045-000 | 1119 TOSCHI DR | 63,615 | 83,160 | 146,775 | 435.15 | 435.14 |
| 009-580-046-000 | 1123 TOSCHI DR | 61,169 | 105,657 | 166,826 | 435.15 | 435.14 |
| 009-580-047-000 | 1127 TOSCHI DR | 61,200 | 155,040 | 216,240 | 435.15 | 435.14 |
| 009-580-048-000 | 1131 TOSCHI DR | 49,674 | 121,427 | 171,101 | 435.15 | 435.14 |
| 009-580-049-000 | 1135 TOSCHI DR | 44,154 | 77,271 | 121,425 | 435.15 | 435.14 |
| 009-580-050-000 | 1139 TOSCHI DR | 65,487 | 90,002 | 155,489 | 435.15 | 435.14 |
| 009-580-051-000 | 1143 TOSCHI DR | 56,100 | 127,500 | 183,600 | 435.15 | 435.14 |
| 009-580-052-000 | 1153 TOSCHI DR | 62,694 | 95,929 | 158,623 | 435.15 | 435.14 |
| 009-580-055-000 | 2707 APPLE TREE DR | 60,000 | 162,500 | 222,500 | 435.15 | 435.14 |
| 009-580-056-000 | 2693 APPLE TREE DR | 43,288 | 129,815 | 173,103 | 435.15 | 435.14 |
| 009-580-057-000 | 2681 APPLE TREE DR | 72,415 | 95,488 | 167,903 | 435.15 | 435.14 |
| 009-580-058-000 | NO SITUS AVAILABLE | 43,330 | 135,280 | 178,610 | 435.15 | 435.14 |
| 009-580-059-000 | NO SITUS AVAILABLE | 80,242 | 105,248 | 185,490 | 435.15 | 435.14 |
| 009-580-060-000 | NO SITUS AVAILABLE | 64,012 | 97,839 | 161,851 | 435.15 | 435.14 |
| 009-581-002-000 | 1162 S BERRY DR | 47,529 | 149,827 | 197,356 | 435.15 | 435.14 |
| 009-581-003-000 | 1168 S BERRY DR | 55,000 | 179,900 | 234,900 | 435.15 | 435.14 |
| 009-581-004-000 | 1174 S BERRY DR | 47,529 | 131,976 | 179,505 | 435.15 | 435.14 |
| 009-581-005-000 | 1180 S BERRY DR | 60,000 | 170,000 | 230,000 | 435.15 | 435.14 |
| 009-581-006-000 | 1186 S BERRY DR | 47,529 | 161,023 | 208,552 | 435.15 | 435.14 |
| 009-581-007-000 | 1192 S BERRY DR | 47,529 | 153,048 | 200,577 | 435.15 | 435.14 |
| 009-581-008-000 | 1198 S BERRY DR | 47,529 | 158,197 | 205,726 | 435.15 | 435.14 |
| 009-581-009-000 | 1204 S BERRY DR | 47,529 | 147,873 | 195,402 | 435.15 | 435.14 |
| 009-581-010-000 | 1210 S BERRY DR | 42,249 | 147,504 | 189,753 | 435.15 | 435.14 |
| 009-581-011-000 | 2711 CHERRY TREE DR | 52,811 | 152,732 | 205,543 | 435.15 | 435.14 |
| 009-581-012-000 | 2697 CHERRY TREE DR | 47,529 | 168,649 | 216,178 | 435.15 | 435.14 |
| 009-581-013-000 | 2683 CHERRY TREE DR | 52,811 | 161,234 | 214,045 | 435.15 | 435.14 |

City of Madera
Community Facilities District No. 2005-1 (Public Services)
Charge Detail Report (Sorted by Assessor's Parcel Number)

| Assessor's Parcel Number | Situs Address | Land Assessed Value | Structure Assessed Value | Total Assessed Value | Max Tax | 2017/18 Charge |
|--------------------------|---------------------|---------------------|--------------------------|----------------------|---------|----------------|
| 009-581-014-000 | 2669 CHERRY TREE DR | 60,000 | 183,000 | 243,000 | 435.15 | 435.14 |
| 009-581-015-000 | 2655 CHERRY TREE DR | 51,777 | 161,546 | 213,323 | 435.15 | 435.14 |
| 009-581-016-000 | 2641 CHERRY TREE DR | 52,811 | 167,229 | 220,040 | 435.15 | 435.14 |
| 009-581-017-000 | 2646 ORANGE TREE DR | 63,373 | 162,660 | 226,033 | 435.15 | 435.14 |
| 009-581-018-000 | 2660 ORANGE TREE DR | 47,529 | 132,029 | 179,558 | 435.15 | 435.14 |
| 009-581-019-000 | 2674 ORANGE TREE DR | 51,000 | 166,260 | 217,260 | 435.15 | 435.14 |
| 009-581-020-000 | 2688 ORANGE TREE DR | 52,811 | 133,296 | 186,107 | 435.15 | 435.14 |
| 009-581-021-000 | 2696 ORANGE TREE DR | 52,811 | 151,042 | 203,853 | 435.15 | 435.14 |
| 009-581-022-000 | 2710 ORANGE TREE DR | 58,092 | 165,829 | 223,921 | 435.15 | 435.14 |
| 009-581-023-000 | 2709 ORANGE TREE DR | 58,092 | 110,851 | 168,943 | 435.15 | 435.14 |
| 009-581-024-000 | 2695 ORANGE TREE DR | 42,249 | 159,438 | 201,687 | 435.15 | 435.14 |
| 009-581-025-000 | 2687 ORANGE TREE DR | 47,529 | 164,455 | 211,984 | 435.15 | 435.14 |
| 009-581-026-000 | 2673 ORANGE TREE DR | 47,529 | 130,656 | 178,185 | 435.15 | 435.14 |
| 009-581-027-000 | 2659 ORANGE TREE DR | 47,529 | 154,422 | 201,951 | 435.15 | 435.14 |
| 009-581-028-000 | 2645 ORANGE TREE DR | 42,249 | 158,436 | 200,685 | 435.15 | 435.14 |
| 009-581-029-000 | 2640 APPLE TREE DR | 58,092 | 149,985 | 208,077 | 435.15 | 435.14 |
| 009-581-030-000 | 2654 APPLE TREE DR | 56,653 | 120,953 | 177,606 | 435.15 | 435.14 |
| 009-581-031-000 | 2668 APPLE TREE DR | 42,249 | 126,695 | 168,944 | 435.15 | 435.14 |
| 009-581-032-000 | 2682 APPLE TREE DR | 55,606 | 88,975 | 144,581 | 435.15 | 435.14 |
| 009-581-033-000 | 2694 APPLE TREE DR | 47,529 | 145,708 | 193,237 | 435.15 | 435.14 |
| 009-581-034-000 | 2708 APPLE TREE DR | 60,000 | 175,000 | 235,000 | 435.15 | 435.14 |
| 009-581-041-000 | 1167 TOSCHI DR | 52,811 | 147,873 | 200,684 | 435.15 | 435.14 |
| 009-581-042-000 | 1173 TOSCHI DR | 47,529 | 154,263 | 201,792 | 435.15 | 435.14 |
| 009-581-043-000 | 1179 TOSCHI DR | 52,811 | 139,423 | 192,234 | 435.15 | 435.14 |
| 009-581-044-000 | 1185 TOSCHI DR | 52,811 | 121,466 | 174,277 | 435.15 | 435.14 |
| 009-581-045-000 | 1191 TOSCHI DR | 42,249 | 129,959 | 172,208 | 435.15 | 435.14 |
| 009-581-046-000 | 1197 TOSCHI DR | 42,249 | 140,479 | 182,728 | 435.15 | 435.14 |
| 009-581-047-000 | 1203 TOSCHI DR | 47,529 | 151,422 | 198,951 | 435.15 | 435.14 |
| 009-581-048-000 | 1209 TOSCHI DR | 47,529 | 150,989 | 198,518 | 435.15 | 435.14 |
| 009-581-049-000 | 2600 CHERRY TREE DR | 55,000 | 160,000 | 215,000 | 435.15 | 435.14 |
| 009-581-050-000 | 2614 CHERRY TREE DR | 46,599 | 150,103 | 196,702 | 435.15 | 435.14 |
| 009-581-051-000 | 2628 CHERRY TREE DR | 46,599 | 159,422 | 206,021 | 435.15 | 435.14 |

City of Madera
Community Facilities District No. 2005-1 (Public Services)
Charge Detail Report (Sorted by Assessor's Parcel Number)

| Assessor's Parcel Number | Situs Address | Land Assessed Value | Structure Assessed Value | Total Assessed Value | Max Tax | 2017/18 Charge |
|--------------------------|----------------------|---------------------|--------------------------|----------------------|---------|----------------|
| 009-581-052-000 | 2642 CHERRY TREE DR | 46,599 | 150,103 | 196,702 | 435.15 | 435.14 |
| 009-581-053-000 | 2656 CHERRY TREE DR | 46,599 | 160,458 | 207,057 | 435.15 | 435.14 |
| 009-581-054-000 | 2670 CHERRY TREE DR | 46,599 | 159,370 | 205,969 | 435.15 | 435.14 |
| 009-581-055-000 | 2684 CHERRY TREE DR | 46,599 | 159,993 | 206,592 | 435.15 | 435.14 |
| 009-581-056-000 | 2698 CHERRY TREE DR | 46,599 | 151,708 | 198,307 | 435.15 | 435.14 |
| 009-581-057-000 | 2712 CHERRY TREE DR | 46,599 | 160,407 | 207,006 | 435.15 | 435.14 |
| 009-581-058-000 | NO SITUS AVAILABLE | 4,613 | 0 | 4,613 | 435.15 | 435.14 |
| 009-581-060-000 | NO SITUS AVAILABLE | 42,249 | 126,695 | 168,944 | 435.15 | 435.14 |
| 011-331-001-000 | 307 SAN GABRIEL DR | 31,686 | 164,139 | 195,825 | 435.15 | 435.14 |
| 011-331-002-000 | 297 SAN GABRIEL DR | 31,686 | 202,165 | 233,851 | 435.15 | 435.14 |
| 011-331-003-000 | 277 SAN GABRIEL DR | 37,877 | 146,103 | 183,980 | 435.15 | 435.14 |
| 011-331-004-000 | 1487 LINDA MESA DR | 35,700 | 229,908 | 265,608 | 435.15 | 435.14 |
| 011-331-005-000 | 1477 LINDA MESA DR | 30,600 | 198,798 | 229,398 | 435.15 | 435.14 |
| 011-331-006-000 | 1467 LINDA MESA DR | 30,600 | 164,628 | 195,228 | 435.15 | 435.14 |
| 011-331-007-000 | 1457 LINDA MESA DR | 30,600 | 191,250 | 221,850 | 233.26 | 233.26 |
| 011-331-008-000 | 1447 LINDA MESA DR | 30,600 | 234,600 | 265,200 | 233.26 | 233.26 |
| 011-331-009-000 | 1437 LINDA MESA DR | 30,600 | 203,286 | 233,886 | 233.26 | 233.26 |
| 011-331-010-000 | 1427 LINDA MESA DR | 30,600 | 209,100 | 239,700 | 233.26 | 233.26 |
| 011-331-011-000 | 1417 LINDA MESA DR | 30,600 | 191,046 | 221,646 | 233.26 | 233.26 |
| 011-331-012-000 | 1407 LINDA MESA DR | 30,600 | 211,140 | 241,740 | 435.15 | 435.14 |
| 011-331-013-000 | 1397 LINDA MESA DR | 30,600 | 163,914 | 194,514 | 435.15 | 435.14 |
| 011-331-014-000 | 1387 LINDA MESA DR | 30,600 | 191,046 | 221,646 | 233.26 | 233.26 |
| 011-331-015-000 | 1377 LINDA MESA DR | 12,140 | 0 | 12,140 | 435.15 | 435.14 |
| 011-331-016-000 | 1367 LINDA MESA DR | 30,600 | 231,030 | 261,630 | 233.26 | 233.26 |
| 011-331-017-000 | 1357 LINDA MESA DR | 30,600 | 194,922 | 225,522 | 435.15 | 435.14 |
| 011-331-018-000 | 1347 LINDA MESA DR | 35,700 | 228,174 | 263,874 | 435.15 | 435.14 |
| 011-331-019-000 | 272 RANCHO MIRAGE RD | 12,140 | 0 | 12,140 | 233.26 | 233.26 |
| 011-331-020-000 | 292 RANCHO MIRAGE RD | 12,140 | 0 | 12,140 | 233.26 | 233.26 |
| 011-331-021-000 | 302 RANCHO MIRAGE RD | 12,140 | 0 | 12,140 | 233.26 | 233.26 |
| 011-331-022-000 | 1486 LINDA MESA DR | 30,600 | 216,750 | 247,350 | 435.15 | 435.14 |
| 011-331-023-000 | 1476 LINDA MESA DR | 12,140 | 0 | 12,140 | 435.15 | 435.14 |
| 011-331-024-000 | 1466 LINDA MESA DR | 30,600 | 222,360 | 252,960 | 435.15 | 435.14 |

City of Madera
Community Facilities District No. 2005-1 (Public Services)
Charge Detail Report (Sorted by Assessor's Parcel Number)

| Assessor's Parcel Number | Situs Address | Land Assessed Value | Structure Assessed Value | Total Assessed Value | Max Tax | 2017/18 Charge |
|--------------------------|-----------------------|---------------------|--------------------------|----------------------|---------|----------------|
| 011-331-025-000 | 1456 LINDA MESA DR | 30,600 | 224,400 | 255,000 | 435.15 | 435.14 |
| 011-331-026-000 | 1446 LINDA MESA DR | 30,600 | 198,492 | 229,092 | 435.15 | 435.14 |
| 011-331-027-000 | 1436 LINDA MESA DR | 30,600 | 223,278 | 253,878 | 233.26 | 233.26 |
| 011-331-028-000 | 1426 LINDA MESA DR | 30,600 | 164,016 | 194,616 | 233.26 | 233.26 |
| 011-331-029-000 | 1416 LINDA MESA DR | 30,600 | 189,210 | 219,810 | 233.26 | 233.26 |
| 011-331-030-000 | 1406 LINDA MESA DR | 30,600 | 165,138 | 195,738 | 435.15 | 435.14 |
| 011-331-031-000 | 1396 LINDA MESA DR | 30,600 | 222,564 | 253,164 | 233.26 | 233.26 |
| 011-331-032-000 | 1386 LINDA MESA DR | 30,600 | 191,964 | 222,564 | 233.26 | 233.26 |
| 011-331-033-000 | 1376 LINDA MESA DR | 30,600 | 166,464 | 197,064 | 435.15 | 435.14 |
| 011-331-034-000 | 1366 LINDA MESA DR | 30,600 | 221,034 | 251,634 | 435.15 | 435.14 |
| 011-331-035-000 | 1356 LINDA MESA DR | 30,600 | 211,344 | 241,944 | 435.15 | 435.14 |
| 011-331-036-000 | 1346 LINDA MESA DR | 35,700 | 211,956 | 247,656 | 233.26 | 233.26 |
| 011-331-037-000 | 1341 PASEO DEL MAR PR | 35,700 | 225,726 | 261,426 | 435.15 | 435.14 |
| 011-331-038-000 | 1351 PASEO DEL MAR PR | 30,600 | 202,470 | 233,070 | 435.15 | 435.14 |
| 011-331-039-000 | 1361 PASEO DEL MAR PR | 30,600 | 192,780 | 223,380 | 435.15 | 435.14 |
| 011-331-040-000 | 1371 PASEO DEL MAR PR | 30,600 | 170,646 | 201,246 | 435.15 | 435.14 |
| 011-331-041-000 | 1381 PASEO DEL MAR PR | 12,140 | 0 | 12,140 | 435.15 | 435.14 |
| 011-331-042-000 | 1391 PASEO DEL MAR PR | 31,066 | 192,612 | 223,678 | 435.15 | 435.14 |
| 011-331-043-000 | 1401 PASEO DEL MAR PR | 30,600 | 165,036 | 195,636 | 435.15 | 435.14 |
| 011-331-044-000 | 1411 PASEO DEL MAR PR | 30,600 | 228,276 | 258,876 | 435.15 | 435.14 |
| 011-331-045-000 | 1421 PASEO DEL MAR PR | 31,066 | 167,759 | 198,825 | 435.15 | 435.14 |
| 011-331-046-000 | 1431 PASEO DEL MAR PR | 31,066 | 195,512 | 226,578 | 435.15 | 435.14 |
| 011-331-047-000 | 1441 PASEO DEL MAR PR | 31,066 | 167,552 | 198,618 | 435.15 | 435.14 |
| 011-331-048-000 | 1451 PASEO DEL MAR PR | 31,066 | 205,557 | 236,623 | 435.15 | 435.14 |
| 011-331-049-000 | 1461 PASEO DEL MAR PR | 31,066 | 188,263 | 219,329 | 435.15 | 435.14 |
| 011-331-050-000 | 1471 PASEO DEL MAR PR | 31,066 | 158,335 | 189,401 | 435.15 | 435.14 |
| 011-331-051-000 | 1481 PASEO DEL MAR PR | 36,243 | 223,575 | 259,818 | 435.15 | 435.14 |
| 011-332-001-000 | 342 RANCHO MIRAGE RD | 36,243 | 225,025 | 261,268 | 435.15 | 435.14 |
| 011-332-002-000 | 362 RANCHO MIRAGE RD | 31,066 | 195,926 | 226,992 | 435.15 | 435.14 |
| 011-332-003-000 | 382 RANCHO MIRAGE RD | 31,066 | 194,559 | 225,625 | 435.15 | 435.14 |
| 011-332-004-000 | 412 RANCHO MIRAGE RD | 31,066 | 184,535 | 215,601 | 435.15 | 435.14 |
| 011-332-005-000 | 432 RANCHO MIRAGE RD | 31,066 | 155,539 | 186,605 | 435.15 | 435.14 |

City of Madera
Community Facilities District No. 2005-1 (Public Services)
Charge Detail Report (Sorted by Assessor's Parcel Number)

| Assessor's Parcel Number | Situs Address | Land Assessed Value | Structure Assessed Value | Total Assessed Value | Max Tax | 2017/18 Charge |
|--------------------------|-----------------------|---------------------|--------------------------|----------------------|---------|----------------|
| 011-332-006-000 | 452 RANCHO MIRAGE RD | 31,066 | 241,801 | 272,867 | 435.15 | 435.14 |
| 011-332-007-000 | 1324 LA QUINTA WAY | 41,422 | 183,500 | 224,922 | 435.15 | 435.14 |
| 011-332-008-000 | 1334 LA QUINTA WAY | 31,066 | 198,308 | 229,374 | 435.15 | 435.14 |
| 011-332-009-000 | 1344 LA QUINTA WAY | 31,066 | 185,777 | 216,843 | 435.15 | 435.14 |
| 011-332-010-000 | 1354 LA QUINTA WAY | 31,066 | 191,473 | 222,539 | 435.15 | 435.14 |
| 011-332-011-000 | 1364 LA QUINTA WAY | 31,066 | 215,395 | 246,461 | 435.15 | 435.14 |
| 011-332-012-000 | 1394 LA QUINTA WAY | 31,066 | 197,687 | 228,753 | 435.15 | 435.14 |
| 011-332-013-000 | 1404 LA QUINTA WAY | 31,066 | 204,107 | 235,173 | 435.15 | 435.14 |
| 011-332-014-000 | 1414 LA QUINTA WAY | 31,066 | 212,184 | 243,250 | 435.15 | 435.14 |
| 011-332-015-000 | 1424 LA QUINTA WAY | 31,066 | 157,196 | 188,262 | 435.15 | 435.14 |
| 011-332-016-000 | 1434 LA QUINTA WAY | 44,154 | 143,506 | 187,660 | 435.15 | 435.14 |
| 011-332-017-000 | 1444 LA QUINTA WAY | 43,288 | 175,758 | 219,046 | 435.15 | 435.14 |
| 011-332-018-000 | 1454 LA QUINTA WAY | 33,115 | 187,661 | 220,776 | 435.15 | 435.14 |
| 011-332-019-000 | 1464 LA QUINTA WAY | 32,466 | 129,869 | 162,335 | 435.15 | 435.14 |
| 011-332-020-000 | 1474 LA QUINTA WAY | 43,288 | 167,749 | 211,037 | 435.15 | 435.14 |
| 011-332-021-000 | 1484 LA QUINTA WAY | 54,111 | 167,749 | 221,860 | 435.15 | 435.14 |
| 011-332-022-000 | 1494 LA QUINTA WAY | 83,921 | 218,477 | 302,398 | 435.15 | 435.14 |
| 011-332-023-000 | 457 SAN GABRIEL DR | 31,686 | 229,943 | 261,629 | 435.15 | 435.14 |
| 011-332-024-000 | 437 SAN GABRIEL DR | 31,686 | 220,226 | 251,912 | 435.15 | 435.14 |
| 011-332-025-000 | 417 SAN GABRIEL DR | 30,833 | 199,668 | 230,501 | 435.15 | 435.14 |
| 011-332-026-000 | 387 SAN GABRIEL DR | 31,686 | 164,139 | 195,825 | 435.15 | 435.14 |
| 011-332-027-000 | 367 SAN GABRIEL DR | 31,066 | 203,175 | 234,241 | 435.15 | 435.14 |
| 011-332-028-000 | 347 SAN GABRIEL DR | 31,686 | 165,829 | 197,515 | 435.15 | 435.14 |
| 011-332-029-000 | 1488 PASEO DEL MAR PR | 36,243 | 219,744 | 255,987 | 435.15 | 435.14 |
| 011-332-030-000 | 1478 PASEO DEL MAR PR | 31,066 | 160,614 | 191,680 | 435.15 | 435.14 |
| 011-332-031-000 | 1468 PASEO DEL MAR PR | 31,066 | 203,382 | 234,448 | 435.15 | 435.14 |
| 011-332-032-000 | 1458 PASEO DEL MAR PR | 31,066 | 187,849 | 218,915 | 435.15 | 435.14 |
| 011-332-033-000 | 1448 PASEO DEL MAR PR | 31,066 | 228,236 | 259,302 | 233.26 | 233.26 |
| 011-332-034-000 | 1438 PASEO DEL MAR PR | 30,600 | 190,638 | 221,238 | 435.15 | 435.14 |
| 011-332-035-000 | 1428 PASEO DEL MAR PR | 31,066 | 163,306 | 194,372 | 435.15 | 435.14 |
| 011-332-036-000 | 1418 PASEO DEL MAR PR | 31,066 | 202,553 | 233,619 | 435.15 | 435.14 |
| 011-332-037-000 | 1408 PASEO DEL MAR PR | 30,600 | 189,516 | 220,116 | 435.15 | 435.14 |

City of Madera
Community Facilities District No. 2005-1 (Public Services)
Charge Detail Report (Sorted by Assessor's Parcel Number)

| Assessor's Parcel Number | Situs Address | Land Assessed Value | Structure Assessed Value | Total Assessed Value | Max Tax | 2017/18 Charge |
|--------------------------|-----------------------|---------------------|--------------------------|----------------------|---------|----------------|
| 011-332-038-000 | 1398 PASEO DEL MAR PR | 30,600 | 200,124 | 230,724 | 435.15 | 435.14 |
| 011-332-039-000 | 1388 PASEO DEL MAR PR | 30,600 | 229,194 | 259,794 | 435.15 | 435.14 |
| 011-332-040-000 | 1378 PASEO DEL MAR PR | 30,600 | 201,552 | 232,152 | 435.15 | 435.14 |
| 011-332-041-000 | 1368 PASEO DEL MAR PR | 30,600 | 165,138 | 195,738 | 435.15 | 435.14 |
| 011-332-042-000 | 1358 PASEO DEL MAR PR | 30,600 | 192,372 | 222,972 | 435.15 | 435.14 |
| 011-332-043-000 | 1348 PASEO DEL MAR PR | 30,600 | 231,438 | 262,038 | 435.15 | 435.14 |
| 011-332-044-000 | 1343 LA QUINTA WAY | 36,243 | 218,605 | 254,848 | 435.15 | 435.14 |
| 011-332-045-000 | 1353 LA QUINTA WAY | 31,066 | 219,847 | 250,913 | 435.15 | 435.14 |
| 011-332-046-000 | 1363 LA QUINTA WAY | 31,066 | 201,001 | 232,067 | 435.15 | 435.14 |
| 011-332-047-000 | 1373 LA QUINTA WAY | 31,066 | 168,898 | 199,964 | 435.15 | 435.14 |
| 011-332-048-000 | 1383 LA QUINTA WAY | 31,066 | 197,273 | 228,339 | 435.15 | 435.14 |
| 011-332-049-000 | 1393 LA QUINTA WAY | 30,000 | 233,000 | 263,000 | 435.15 | 435.14 |
| 011-332-050-000 | 1403 LA QUINTA WAY | 31,066 | 196,443 | 227,509 | 435.15 | 435.14 |
| 011-332-051-000 | 1413 LA QUINTA WAY | 31,066 | 201,932 | 232,998 | 435.15 | 435.14 |
| 011-332-052-000 | 1423 LA QUINTA WAY | 31,066 | 157,921 | 188,987 | 435.15 | 435.14 |
| 011-332-053-000 | 1433 LA QUINTA WAY | 31,066 | 184,846 | 215,912 | 435.15 | 435.14 |
| 011-332-054-000 | 1443 LA QUINTA WAY | 31,066 | 214,152 | 245,218 | 435.15 | 435.14 |
| 011-332-055-000 | 1453 LA QUINTA WAY | 36,243 | 214,256 | 250,499 | 435.15 | 435.14 |
| 011-332-056-000 | 1463 LA QUINTA WAY | 31,066 | 200,793 | 231,859 | 435.15 | 435.14 |
| 011-332-057-000 | 1473 LA QUINTA WAY | 31,686 | 161,603 | 193,289 | 435.15 | 435.14 |
| 011-332-058-000 | 1483 LA QUINTA WAY | 36,243 | 215,705 | 251,948 | 435.15 | 435.14 |
| 011-333-001-000 | 257 SAN GABRIEL DR | 33,115 | 168,895 | 202,010 | 435.15 | 435.14 |
| 011-333-002-000 | 237 SAN GABRIEL DR | 50,865 | 183,983 | 234,848 | 435.15 | 435.14 |
| 011-333-003-000 | 217 SAN GABRIEL DR | 44,154 | 203,117 | 247,271 | 435.15 | 435.14 |
| 011-333-004-000 | 1495 VERDE MESA WAY | 43,288 | 180,735 | 224,023 | 435.15 | 435.14 |
| 011-333-005-000 | 1485 VERDE MESA WAY | 43,288 | 189,394 | 232,682 | 435.15 | 435.14 |
| 011-333-006-000 | 1475 VERDE MESA WAY | 33,115 | 298,054 | 331,169 | 435.15 | 435.14 |
| 011-333-007-000 | 1465 VERDE MESA WAY | 33,115 | 273,766 | 306,881 | 435.15 | 435.14 |
| 011-333-008-000 | 1455 VERDE MESA WAY | 32,466 | 254,329 | 286,795 | 435.15 | 435.14 |
| 011-333-009-000 | 1445 VERDE MESA WAY | 30,600 | 219,402 | 250,002 | 233.26 | 233.26 |
| 011-333-010-000 | 1435 VERDE MESA WAY | 30,600 | 198,390 | 228,990 | 435.15 | 435.14 |
| 011-333-011-000 | 1425 VERDE MESA WAY | 30,600 | 231,948 | 262,548 | 435.15 | 435.14 |

City of Madera
Community Facilities District No. 2005-1 (Public Services)
Charge Detail Report (Sorted by Assessor's Parcel Number)

| Assessor's Parcel Number | Situs Address | Land Assessed Value | Structure Assessed Value | Total Assessed Value | Max Tax | 2017/18 Charge |
|--------------------------|----------------------|---------------------|--------------------------|----------------------|---------|----------------|
| 011-333-012-000 | 1424 LA COSTA CT | 12,140 | 0 | 12,140 | 435.15 | 435.14 |
| 011-333-013-000 | 1434 LA COSTA CT | 12,140 | 0 | 12,140 | 435.15 | 435.14 |
| 011-333-014-000 | 1444 LA COSTA CT | 12,140 | 0 | 12,140 | 435.15 | 435.14 |
| 011-333-015-000 | 1449 LA COSTA CT | 12,140 | 0 | 12,140 | 435.15 | 435.14 |
| 011-333-016-000 | 1439 LA COSTA CT | 12,140 | 0 | 12,140 | 435.15 | 435.14 |
| 011-333-017-000 | 1429 LA COSTA CT | 12,140 | 0 | 12,140 | 435.15 | 435.14 |
| 011-333-018-000 | 1420 LOMA LINDA CT | 40,000 | 227,500 | 267,500 | 233.26 | 233.26 |
| 011-333-019-000 | 1430 LOMA LINDA CT | 50,000 | 214,400 | 264,400 | 233.26 | 233.26 |
| 011-333-020-000 | 1440 LOMA LINDA CT | 50,000 | 220,900 | 270,900 | 435.15 | 435.14 |
| 011-333-021-000 | 1443 LOMA LINDA CT | 30,000 | 242,100 | 272,100 | 435.15 | 435.14 |
| 011-333-022-000 | 1433 LOMA LINDA CT | 35,000 | 203,400 | 238,400 | 233.26 | 233.26 |
| 011-333-023-000 | 1423 LOMA LINDA CT | 30,000 | 235,000 | 265,000 | 435.15 | 435.14 |
| 011-333-024-000 | 1413 LOMA LINDA LN | 33,115 | 240,649 | 273,764 | 435.15 | 435.14 |
| 011-333-025-000 | 1403 LOMA LINDA LN | 33,115 | 220,780 | 253,895 | 435.15 | 435.14 |
| 011-333-026-000 | 1393 LOMA LINDA LN | 65,598 | 171,269 | 236,867 | 435.15 | 435.14 |
| 011-333-027-000 | 1383 LOMA LINDA LN | 36,253 | 216,451 | 252,704 | 435.15 | 435.14 |
| 011-333-028-000 | 1373 LOMA LINDA LN | 31,066 | 326,199 | 357,265 | 435.15 | 435.14 |
| 011-333-029-000 | 1363 LOMA LINDA LN | 33,115 | 215,260 | 248,375 | 435.15 | 435.14 |
| 011-333-030-000 | 1353 LOMA LINDA LN | 32,319 | 210,083 | 242,402 | 435.15 | 435.14 |
| 011-333-031-000 | 1343 LOMA LINDA LN | 12,140 | 0 | 12,140 | 233.26 | 233.26 |
| 011-333-032-000 | 1333 LOMA LINDA LN | 12,140 | 0 | 12,140 | 233.26 | 233.26 |
| 011-333-033-000 | 1323 LOMA LINDA LN | 12,140 | 0 | 12,140 | 435.15 | 435.14 |
| 011-333-034-000 | 32 RANCHO MIRAGE RD | 12,140 | 0 | 12,140 | 435.15 | 435.14 |
| 011-333-035-000 | 52 RANCHO MIRAGE RD | 12,140 | 0 | 12,140 | 435.15 | 435.14 |
| 011-333-036-000 | 72 RANCHO MIRAGE RD | 12,140 | 0 | 12,140 | 435.15 | 435.14 |
| 011-333-037-000 | 92 RANCHO MIRAGE RD | 12,140 | 0 | 12,140 | 435.15 | 435.14 |
| 011-333-038-000 | 102 RANCHO MIRAGE RD | 12,140 | 0 | 12,140 | 435.15 | 435.14 |
| 011-333-039-000 | 122 RANCHO MIRAGE RD | 12,140 | 0 | 12,140 | 435.15 | 435.14 |
| 011-333-040-000 | 142 RANCHO MIRAGE RD | 12,140 | 0 | 12,140 | 435.15 | 435.14 |
| 011-333-041-000 | 182 RANCHO MIRAGE RD | 12,140 | 0 | 12,140 | 435.15 | 435.14 |
| 011-333-042-000 | 212 RANCHO MIRAGE RD | 12,140 | 0 | 12,140 | 233.26 | 233.26 |
| 011-333-043-000 | 232 RANCHO MIRAGE RD | 12,140 | 0 | 12,140 | 435.15 | 435.14 |

City of Madera
Community Facilities District No. 2005-1 (Public Services)
Charge Detail Report (Sorted by Assessor's Parcel Number)

| Assessor's Parcel Number | Situs Address | Land Assessed Value | Structure Assessed Value | Total Assessed Value | Max Tax | 2017/18 Charge |
|--------------------------|------------------------|---------------------|--------------------------|----------------------|---------|----------------|
| 011-333-044-000 | 252 RANCHO MIRAGE RD | 12,140 | 0 | 12,140 | 435.15 | 435.14 |
| 011-333-045-000 | 204 CORONA DR | 35,000 | 228,700 | 263,700 | 435.15 | 435.14 |
| 011-333-046-000 | 184 CORONA DR | 35,000 | 221,200 | 256,200 | 435.15 | 435.14 |
| 011-333-047-000 | 164 CORONA DR | 35,000 | 184,200 | 219,200 | 435.15 | 435.14 |
| 011-333-048-000 | 144 CORONA DR | 35,000 | 158,200 | 193,200 | 435.15 | 435.14 |
| 011-333-049-000 | 124 CORONA DR | 35,000 | 192,900 | 227,900 | 435.15 | 435.14 |
| 011-333-050-000 | 104 CORONA DR | 35,000 | 184,800 | 219,800 | 233.26 | 233.26 |
| 011-333-051-000 | 94 CORONA DR | 35,000 | 219,000 | 254,000 | 233.26 | 233.26 |
| 011-333-052-000 | 74 CORONA DR | 35,000 | 203,600 | 238,600 | 233.26 | 233.26 |
| 011-333-053-000 | 54 CORONA DR | 35,000 | 228,000 | 263,000 | 233.26 | 233.26 |
| 011-333-054-000 | 59 RANCHO SANTA FE DR | 35,000 | 238,500 | 273,500 | 233.26 | 233.26 |
| 011-333-055-000 | 79 RANCHO SANTA FE DR | 35,000 | 202,500 | 237,500 | 233.26 | 233.26 |
| 011-333-056-000 | 99 RANCHO SANTA FE DR | 35,000 | 198,400 | 233,400 | 233.26 | 233.26 |
| 011-333-057-000 | 109 RANCHO SANTA FE DR | 35,000 | 196,600 | 231,600 | 233.26 | 233.26 |
| 011-333-058-000 | 129 RANCHO SANTA FE DR | 35,000 | 203,500 | 238,500 | 233.26 | 233.26 |
| 011-333-059-000 | 149 RANCHO SANTA FE DR | 35,000 | 163,500 | 198,500 | 435.15 | 435.14 |
| 011-333-060-000 | 169 RANCHO SANTA FE DR | 30,000 | 214,800 | 244,800 | 435.15 | 435.14 |
| 011-333-061-000 | 189 RANCHO SANTA FE DR | 35,000 | 182,400 | 217,400 | 435.15 | 435.14 |
| 011-333-062-000 | 219 RANCHO SANTA FE DR | 35,000 | 226,400 | 261,400 | 435.15 | 435.14 |
| 011-333-063-000 | 56 RANCHO SANTA FE DR | 12,140 | 0 | 12,140 | 233.26 | 233.26 |
| 011-333-064-000 | 76 RANCHO SANTA FE DR | 12,140 | 0 | 12,140 | 233.26 | 233.26 |
| 011-333-065-000 | 96 RANCHO SANTA FE DR | 12,140 | 0 | 12,140 | 435.15 | 435.14 |
| 011-333-066-000 | 106 RANCHO SANTA FE DR | 12,140 | 0 | 12,140 | 435.15 | 435.14 |
| 011-333-067-000 | 126 RANCHO SANTA FE DR | 12,140 | 0 | 12,140 | 233.26 | 233.26 |
| 011-333-068-000 | 146 RANCHO SANTA FE DR | 30,000 | 170,000 | 200,000 | 233.26 | 233.26 |
| 011-333-069-000 | 166 RANCHO SANTA FE DR | 30,000 | 175,000 | 205,000 | 233.26 | 233.26 |
| 011-333-070-000 | 186 RANCHO SANTA FE DR | 12,140 | 0 | 12,140 | 435.15 | 435.14 |
| 011-333-071-000 | 216 RANCHO SANTA FE DR | 30,000 | 171,000 | 201,000 | 435.15 | 435.14 |
| 011-333-072-000 | 236 RANCHO SANTA FE DR | 30,000 | 207,500 | 237,500 | 233.26 | 233.26 |
| 011-333-073-000 | 256 RANCHO SANTA FE DR | 40,000 | 208,600 | 248,600 | 435.15 | 435.14 |
| 011-333-074-000 | 1372 VERDE MESA WAY | 30,000 | 235,800 | 265,800 | 435.15 | 435.14 |
| 011-333-075-000 | 1382 VERDE MESA WAY | 35,000 | 202,000 | 237,000 | 435.15 | 435.14 |

City of Madera
Community Facilities District No. 2005-1 (Public Services)
Charge Detail Report (Sorted by Assessor's Parcel Number)

| Assessor's Parcel Number | Situs Address | Land Assessed Value | Structure Assessed Value | Total Assessed Value | Max Tax | 2017/18 Charge |
|--------------------------|----------------------|---------------------|--------------------------|----------------------|---------|----------------|
| 011-333-076-000 | 1392 VERDE MESA WAY | 30,600 | 164,220 | 194,820 | 435.15 | 435.14 |
| 011-333-077-000 | 1402 VERDE MESA WAY | 30,600 | 215,016 | 245,616 | 435.15 | 435.14 |
| 011-333-078-000 | 1412 VERDE MESA WAY | 30,600 | 193,596 | 224,196 | 435.15 | 435.14 |
| 011-333-079-000 | 1422 VERDE MESA WAY | 30,000 | 227,700 | 257,700 | 435.15 | 435.14 |
| 011-333-080-000 | 1432 VERDE MESA WAY | 30,000 | 201,800 | 231,800 | 435.15 | 435.14 |
| 011-333-081-000 | 1442 VERDE MESA WAY | 30,600 | 235,110 | 265,710 | 435.15 | 435.14 |
| 011-333-082-000 | 1452 VERDE MESA WAY | 30,000 | 227,500 | 257,500 | 435.15 | 435.14 |
| 011-333-083-000 | 1462 VERDE MESA WAY | 30,600 | 165,852 | 196,452 | 435.15 | 435.14 |
| 011-333-084-000 | 1472 VERDE MESA WAY | 30,600 | 202,470 | 233,070 | 435.15 | 435.14 |
| 011-333-085-000 | 1482 VERDE MESA WAY | 35,700 | 227,358 | 263,058 | 233.26 | 233.26 |
| 011-333-086-000 | 261 RANCHO MIRAGE RD | 12,140 | 0 | 12,140 | 233.26 | 233.26 |
| 011-333-087-000 | 251 RANCHO MIRAGE RD | 12,140 | 0 | 12,140 | 233.26 | 233.26 |
| 011-333-088-000 | 231 RANCHO MIRAGE RD | 12,140 | 0 | 12,140 | 233.26 | 233.26 |
| 011-333-089-000 | 211 RANCHO MIRAGE RD | 12,140 | 0 | 12,140 | 233.26 | 233.26 |
| 011-333-090-000 | 181 RANCHO MIRAGE RD | 12,140 | 0 | 12,140 | 233.26 | 233.26 |
| 011-333-091-000 | 161 RANCHO MIRAGE RD | 12,140 | 0 | 12,140 | 233.26 | 233.26 |
| 011-333-092-000 | 141 RANCHO MIRAGE RD | 12,140 | 0 | 12,140 | 435.15 | 435.14 |
| 011-333-093-000 | 121 RANCHO MIRAGE RD | 12,140 | 0 | 12,140 | 435.15 | 435.14 |
| 011-333-094-000 | 101 RANCHO MIRAGE RD | 12,140 | 0 | 12,140 | 435.15 | 435.14 |
| 011-333-095-000 | 91 RANCHO MIRAGE RD | 12,140 | 0 | 12,140 | 435.15 | 435.14 |
| 011-333-096-000 | 71 RANCHO MIRAGE RD | 12,140 | 0 | 12,140 | 435.15 | 435.14 |
| 011-333-097-000 | 51 RANCHO MIRAGE RD | 12,140 | 0 | 12,140 | 435.15 | 435.14 |
| 011-341-001-000 | 803 KIWI ST | 33,115 | 138,294 | 171,409 | 435.15 | 435.14 |
| 011-341-002-000 | 813 KIWI ST | 36,243 | 150,155 | 186,398 | 435.15 | 435.14 |
| 011-341-003-000 | 823 KIWI ST | 27,054 | 108,225 | 135,279 | 435.15 | 435.14 |
| 011-341-004-000 | 833 KIWI ST | 27,054 | 109,847 | 136,901 | 435.15 | 435.14 |
| 011-341-005-000 | 843 KIWI ST | 36,967 | 174,279 | 211,246 | 435.15 | 435.14 |
| 011-341-006-000 | 853 KIWI ST | 31,686 | 164,772 | 196,458 | 435.15 | 435.14 |
| 011-341-007-000 | 863 KIWI ST | 38,749 | 145,010 | 183,759 | 435.15 | 435.14 |
| 011-341-008-000 | 873 KIWI ST | 31,066 | 183,292 | 214,358 | 435.15 | 435.14 |
| 011-341-009-000 | 883 KIWI ST | 79,220 | 181,079 | 260,299 | 435.15 | 435.14 |
| 011-341-010-000 | 893 KIWI ST | 44,380 | 144,242 | 188,622 | 435.15 | 435.14 |

City of Madera
Community Facilities District No. 2005-1 (Public Services)
Charge Detail Report (Sorted by Assessor's Parcel Number)

| Assessor's Parcel Number | Situs Address | Land Assessed Value | Structure Assessed Value | Total Assessed Value | Max Tax | 2017/18 Charge |
|--------------------------|----------------|---------------------|--------------------------|----------------------|---------|----------------|
| 011-341-011-000 | 903 KIWI ST | 44,380 | 129,817 | 174,197 | 435.15 | 435.14 |
| 011-341-012-000 | 913 KIWI ST | 33,115 | 133,571 | 166,686 | 435.15 | 435.14 |
| 011-341-013-000 | 923 KIWI ST | 35,700 | 189,720 | 225,420 | 435.15 | 435.14 |
| 011-341-014-000 | 933 KIWI ST | 25,973 | 108,225 | 134,198 | 435.15 | 435.14 |
| 011-341-015-000 | 943 KIWI ST | 44,487 | 121,229 | 165,716 | 435.15 | 435.14 |
| 011-341-016-000 | 1466 GRAPE ST | 30,000 | 178,000 | 208,000 | 435.15 | 435.14 |
| 011-341-017-000 | 1456 GRAPE ST | 27,054 | 123,375 | 150,429 | 435.15 | 435.14 |
| 011-341-018-000 | 1446 GRAPE ST | 44,487 | 127,901 | 172,388 | 435.15 | 435.14 |
| 011-341-019-000 | 1436 GRAPE ST | 26,524 | 129,445 | 155,969 | 435.15 | 435.14 |
| 011-341-020-000 | 1036 PAPAYA ST | 44,154 | 121,427 | 165,581 | 435.15 | 435.14 |
| 011-341-021-000 | 1026 PAPAYA ST | 36,243 | 163,617 | 199,860 | 435.15 | 435.14 |
| 011-341-022-000 | 1016 PAPAYA ST | 21,219 | 112,469 | 133,688 | 435.15 | 435.14 |
| 011-341-023-000 | 1006 PAPAYA ST | 33,115 | 132,466 | 165,581 | 435.15 | 435.14 |
| 011-341-024-000 | 996 PAPAYA ST | 35,000 | 175,000 | 210,000 | 435.15 | 435.14 |
| 011-341-025-000 | 986 PAPAYA ST | 35,700 | 178,500 | 214,200 | 435.15 | 435.14 |
| 011-341-026-000 | 976 PAPAYA ST | 32,466 | 84,415 | 116,881 | 435.15 | 435.14 |
| 011-341-027-000 | 966 PAPAYA ST | 33,115 | 143,506 | 176,621 | 435.15 | 435.14 |
| 011-341-028-000 | 956 PAPAYA ST | 37,877 | 108,225 | 146,102 | 435.15 | 435.14 |
| 011-341-029-000 | 946 PAPAYA ST | 30,000 | 194,500 | 224,500 | 435.15 | 435.14 |
| 011-341-030-000 | 936 PAPAYA ST | 67,489 | 151,711 | 219,200 | 435.15 | 435.14 |
| 011-341-031-000 | 926 PAPAYA ST | 65,714 | 217,147 | 282,861 | 435.15 | 435.14 |
| 011-341-032-000 | 916 PAPAYA ST | 30,000 | 187,000 | 217,000 | 435.15 | 435.14 |
| 011-341-033-000 | 906 PAPAYA ST | 70,156 | 124,739 | 194,895 | 435.15 | 435.14 |
| 011-341-034-000 | 896 PAPAYA ST | 65,518 | 116,208 | 181,726 | 435.15 | 435.14 |
| 011-341-035-000 | 886 PAPAYA ST | 33,115 | 82,792 | 115,907 | 435.15 | 435.14 |
| 011-341-036-000 | 876 PAPAYA ST | 21,643 | 117,965 | 139,608 | 435.15 | 435.14 |
| 011-341-037-000 | 866 PAPAYA ST | 38,925 | 134,574 | 173,499 | 435.15 | 435.14 |
| 011-341-038-000 | 856 PAPAYA ST | 38,925 | 106,769 | 145,694 | 435.15 | 435.14 |
| 011-341-039-000 | 846 PAPAYA ST | 53,468 | 103,443 | 156,911 | 435.15 | 435.14 |
| 011-341-040-000 | 836 PAPAYA ST | 33,363 | 133,463 | 166,826 | 435.15 | 435.14 |
| 011-341-041-000 | 826 PAPAYA ST | 65,714 | 155,674 | 221,388 | 435.15 | 435.14 |
| 011-341-042-000 | 816 PAPAYA ST | 31,686 | 151,042 | 182,728 | 435.15 | 435.14 |

City of Madera
Community Facilities District No. 2005-1 (Public Services)
Charge Detail Report (Sorted by Assessor's Parcel Number)

| Assessor's Parcel Number | Situs Address | Land Assessed Value | Structure Assessed Value | Total Assessed Value | Max Tax | 2017/18 Charge |
|--------------------------|----------------|---------------------|--------------------------|----------------------|---------|----------------|
| 011-341-043-000 | 806 PAPAYA ST | 89,377 | 108,368 | 197,745 | 435.15 | 435.14 |
| 011-342-001-000 | 807 PAPAYA ST | 55,475 | 144,131 | 199,606 | 435.15 | 435.14 |
| 011-342-002-000 | 817 PAPAYA ST | 74,971 | 129,379 | 204,350 | 435.15 | 435.14 |
| 011-342-003-000 | 827 PAPAYA ST | 44,487 | 111,218 | 155,705 | 435.15 | 435.14 |
| 011-342-004-000 | 837 PAPAYA ST | 36,243 | 160,510 | 196,753 | 435.15 | 435.14 |
| 011-342-005-000 | 847 PAPAYA ST | 55,112 | 151,500 | 206,612 | 435.15 | 435.14 |
| 011-342-006-000 | 857 PAPAYA ST | 65,714 | 145,480 | 211,194 | 435.15 | 435.14 |
| 011-342-007-000 | 867 PAPAYA ST | 60,074 | 114,089 | 174,163 | 435.15 | 435.14 |
| 011-342-008-000 | 887 PAPAYA ST | 27,054 | 108,225 | 135,279 | 435.15 | 435.14 |
| 011-342-009-000 | 897 PAPAYA ST | 64,675 | 117,825 | 182,500 | 435.15 | 435.14 |
| 011-342-010-000 | 907 PAPAYA ST | 33,363 | 133,463 | 166,826 | 435.15 | 435.14 |
| 011-342-011-000 | 917 PAPAYA ST | 79,220 | 143,166 | 222,386 | 435.15 | 435.14 |
| 011-342-012-000 | 927 PAPAYA ST | 36,179 | 106,103 | 142,282 | 435.15 | 435.14 |
| 011-342-013-000 | 937 PAPAYA ST | 36,243 | 165,688 | 201,931 | 435.15 | 435.14 |
| 011-342-014-000 | 947 PAPAYA ST | 27,054 | 110,389 | 137,443 | 435.15 | 435.14 |
| 011-342-015-000 | 957 PAPAYA ST | 35,000 | 175,000 | 210,000 | 435.15 | 435.14 |
| 011-342-016-000 | 967 PAPAYA ST | 65,598 | 111,099 | 176,697 | 435.15 | 435.14 |
| 011-342-017-000 | 977 PAPAYA ST | 37,877 | 115,260 | 153,137 | 435.15 | 435.14 |
| 011-342-018-000 | 987 PAPAYA ST | 27,054 | 125,540 | 152,594 | 435.15 | 435.14 |
| 011-342-019-000 | 997 PAPAYA ST | 44,487 | 122,340 | 166,827 | 435.15 | 435.14 |
| 011-342-020-000 | 1007 PAPAYA ST | 32,466 | 148,051 | 180,517 | 435.15 | 435.14 |
| 011-342-021-000 | 1465 GRAPE ST | 26,524 | 122,018 | 148,542 | 435.15 | 435.14 |
| 011-342-022-000 | 922 KIWI ST | 38,925 | 127,901 | 166,826 | 435.15 | 435.14 |
| 011-342-023-000 | 912 KIWI ST | 57,427 | 113,035 | 170,462 | 435.15 | 435.14 |
| 011-342-024-000 | 902 KIWI ST | 68,356 | 110,297 | 178,653 | 435.15 | 435.14 |
| 011-342-025-000 | 924 PEAR ST | 66,571 | 76,558 | 143,129 | 435.15 | 435.14 |
| 011-342-026-000 | 914 PEAR ST | 65,445 | 201,597 | 267,042 | 435.15 | 435.14 |
| 011-342-027-000 | 904 PEAR ST | 44,154 | 151,233 | 195,387 | 435.15 | 435.14 |
| 011-342-028-000 | 894 PEAR ST | 32,466 | 91,990 | 124,456 | 435.15 | 435.14 |
| 011-342-029-000 | 884 PEAR ST | 21,643 | 102,812 | 124,455 | 435.15 | 435.14 |
| 011-342-030-000 | 874 PEAR ST | 26,404 | 132,029 | 158,433 | 435.15 | 435.14 |
| 011-342-031-000 | 864 PEAR ST | 35,700 | 147,900 | 183,600 | 435.15 | 435.14 |

City of Madera
Community Facilities District No. 2005-1 (Public Services)
Charge Detail Report (Sorted by Assessor's Parcel Number)

| Assessor's Parcel Number | Situs Address | Land Assessed Value | Structure Assessed Value | Total Assessed Value | Max Tax | 2017/18 Charge |
|--------------------------|-------------------|---------------------|--------------------------|----------------------|---------|----------------|
| 011-342-032-000 | 854 PEAR ST | 74,184 | 171,373 | 245,557 | 435.15 | 435.14 |
| 011-342-033-000 | 844 PEAR ST | 33,115 | 99,351 | 132,466 | 435.15 | 435.14 |
| 011-342-034-000 | 834 PEAR ST | 70,990 | 147,834 | 218,824 | 435.15 | 435.14 |
| 011-342-035-000 | 824 PEAR ST | 60,389 | 164,958 | 225,347 | 435.15 | 435.14 |
| 011-342-036-000 | 814 PEAR ST | 36,243 | 159,993 | 196,236 | 435.15 | 435.14 |
| 011-342-037-000 | 804 PEAR ST | 70,156 | 167,755 | 237,911 | 435.15 | 435.14 |
| 011-342-038-000 | 825 PEAR ST | 35,700 | 178,500 | 214,200 | 435.15 | 435.14 |
| 011-342-039-000 | 845 PEAR CT | 30,600 | 178,500 | 209,100 | 435.15 | 435.14 |
| 011-342-040-000 | 855 PEAR CT | 66,571 | 162,774 | 229,345 | 435.15 | 435.14 |
| 011-342-041-000 | 865 PEAR CT | 68,214 | 198,590 | 266,804 | 435.15 | 435.14 |
| 011-342-042-000 | 875 PEAR CT | 35,000 | 185,000 | 220,000 | 435.15 | 435.14 |
| 011-342-043-000 | 885 PEAR CT | 26,404 | 184,842 | 211,246 | 435.15 | 435.14 |
| 011-342-044-000 | 905 PEAR ST | 81,837 | 157,355 | 239,192 | 435.15 | 435.14 |
| 011-342-045-000 | 882 KIWI ST | 74,163 | 158,843 | 233,006 | 435.15 | 435.14 |
| 011-342-046-000 | 872 KIWI ST | 35,000 | 154,000 | 189,000 | 435.15 | 435.14 |
| 011-342-047-000 | 862 KIWI ST | 33,115 | 137,213 | 170,328 | 435.15 | 435.14 |
| 011-342-048-000 | 852 KIWI ST | 30,600 | 149,940 | 180,540 | 435.15 | 435.14 |
| 011-342-049-000 | 842 KIWI ST | 33,115 | 136,440 | 169,555 | 435.15 | 435.14 |
| 011-342-050-000 | 832 KIWI ST | 33,115 | 107,076 | 140,191 | 435.15 | 435.14 |
| 011-342-051-000 | 822 KIWI ST | 33,115 | 127,388 | 160,503 | 435.15 | 435.14 |
| 011-342-052-000 | 812 KIWI ST | 32,466 | 118,506 | 150,972 | 435.15 | 435.14 |
| 011-342-053-000 | 802 KIWI ST | 33,115 | 128,602 | 161,717 | 435.15 | 435.14 |
| 011-342-054-000 | 1468 E ALMOND AVE | 59,562 | 108,040 | 167,602 | 435.15 | 435.14 |
| 011-342-055-000 | 1458 E ALMOND AVE | 31,830 | 158,093 | 189,923 | 435.15 | 435.14 |
| 011-342-056-000 | 1448 E ALMOND AVE | 37,134 | 148,225 | 185,359 | 435.15 | 435.14 |
| 011-342-057-000 | 1438 E ALMOND AVE | 26,404 | 201,636 | 228,040 | 435.15 | 435.14 |
| 011-342-058-000 | 1428 E ALMOND AVE | 26,404 | 177,237 | 203,641 | 435.15 | 435.14 |
| 011-342-059-000 | 1418 E ALMOND AVE | 26,404 | 192,235 | 218,639 | 435.15 | 435.14 |
| 011-342-060-000 | 1408 E ALMOND AVE | 35,000 | 182,000 | 217,000 | 435.15 | 435.14 |
| 011-350-001-000 | 1292 PEACH CT | 36,967 | 182,835 | 219,802 | 435.15 | 435.14 |
| 011-350-002-000 | 1282 PEACH CT | 36,967 | 135,197 | 172,164 | 435.15 | 435.14 |
| 011-350-003-000 | 1275 NECTARINE ST | 26,524 | 153,001 | 179,525 | 435.15 | 435.14 |

City of Madera
Community Facilities District No. 2005-1 (Public Services)
Charge Detail Report (Sorted by Assessor's Parcel Number)

| Assessor's Parcel Number | Situs Address | Land Assessed Value | Structure Assessed Value | Total Assessed Value | Max Tax | 2017/18 Charge |
|--------------------------|-------------------|---------------------|--------------------------|----------------------|---------|----------------|
| 011-350-004-000 | 1265 NECTARINE ST | 21,219 | 155,546 | 176,765 | 435.15 | 435.14 |
| 011-350-005-000 | 1255 NECTARINE ST | 25,888 | 186,709 | 212,597 | 435.15 | 435.14 |
| 011-350-006-000 | 1245 NECTARINE ST | 26,404 | 196,355 | 222,759 | 435.15 | 435.14 |
| 011-350-007-000 | 681 PEACH ST | 31,686 | 160,759 | 192,445 | 435.15 | 435.14 |
| 011-350-008-000 | 1222 PEACH CT | 26,524 | 182,111 | 208,635 | 435.15 | 435.14 |
| 011-350-009-000 | 1232 PEACH CT | 26,404 | 186,954 | 213,358 | 435.15 | 435.14 |
| 011-350-010-000 | 1242 PEACH CT | 26,404 | 184,820 | 211,224 | 435.15 | 435.14 |
| 011-350-011-000 | 1252 PEACH CT | 36,243 | 159,889 | 196,132 | 435.15 | 435.14 |
| 011-350-012-000 | 1262 PEACH CT | 26,404 | 191,073 | 217,477 | 435.15 | 435.14 |
| 011-350-013-000 | 1272 PEACH CT | 31,686 | 182,623 | 214,309 | 435.15 | 435.14 |
| 011-350-014-000 | 1291 PEACH CT | 31,686 | 175,863 | 207,549 | 435.15 | 435.14 |
| 011-350-015-000 | 1281 PEACH CT | 36,967 | 160,125 | 197,092 | 435.15 | 435.14 |
| 011-350-016-000 | 1271 PEACH CT | 21,219 | 182,816 | 204,035 | 435.15 | 435.14 |
| 011-350-017-000 | 1261 PEACH CT | 36,243 | 157,714 | 193,957 | 435.15 | 435.14 |
| 011-350-018-000 | 1251 PEACH CT | 36,967 | 199,629 | 236,596 | 435.15 | 435.14 |
| 011-350-019-000 | 1241 PEACH CT | 26,404 | 199,840 | 226,244 | 435.15 | 435.14 |
| 011-350-020-000 | 1231 PEACH CT | 26,404 | 189,806 | 216,210 | 435.15 | 435.14 |
| 011-350-021-000 | 1221 PEACH CT | 26,404 | 190,757 | 217,161 | 435.15 | 435.14 |
| 011-350-022-000 | 1211 PEACH CT | 26,404 | 203,855 | 230,259 | 435.15 | 435.14 |
| 011-350-023-000 | 1201 PEACH CT | 36,967 | 222,549 | 259,516 | 435.15 | 435.14 |
| 011-350-024-000 | 1208 CHERRY ST | 31,066 | 159,993 | 191,059 | 435.15 | 435.14 |
| 011-350-025-000 | 1218 CHERRY ST | 31,686 | 204,801 | 236,487 | 435.15 | 435.14 |
| 011-350-026-000 | 1228 CHERRY ST | 26,404 | 199,101 | 225,505 | 435.15 | 435.14 |
| 011-350-027-000 | 1238 CHERRY ST | 36,243 | 172,108 | 208,351 | 435.15 | 435.14 |
| 011-350-028-000 | 1248 CHERRY ST | 25,888 | 174,490 | 200,378 | 435.15 | 435.14 |
| 011-350-029-000 | 1258 CHERRY ST | 26,404 | 201,636 | 228,040 | 435.15 | 435.14 |
| 011-350-030-000 | 1268 CHERRY ST | 36,243 | 160,510 | 196,753 | 435.15 | 435.14 |
| 011-350-031-000 | 1278 CHERRY ST | 26,404 | 212,409 | 238,813 | 435.15 | 435.14 |
| 011-350-032-000 | 1288 CHERRY ST | 36,243 | 144,148 | 180,391 | 435.15 | 435.14 |
| 011-350-033-000 | 1298 CHERRY ST | 36,967 | 206,178 | 243,145 | 435.15 | 435.14 |
| 011-350-034-000 | 336 S KNOX ST | 36,243 | 194,062 | 230,305 | 435.15 | 435.14 |
| 011-350-035-000 | 356 S KNOX ST | 31,686 | 131,712 | 163,398 | 435.15 | 435.14 |

City of Madera
Community Facilities District No. 2005-1 (Public Services)
Charge Detail Report (Sorted by Assessor's Parcel Number)

| Assessor's Parcel Number | Situs Address | Land Assessed Value | Structure Assessed Value | Total Assessed Value | Max Tax | 2017/18 Charge |
|--------------------------|----------------|---------------------|--------------------------|----------------------|---------|----------------|
| 011-350-036-000 | 376 S KNOX ST | 35,000 | 185,000 | 220,000 | 435.15 | 435.14 |
| 011-350-037-000 | 396 S KNOX ST | 36,243 | 163,617 | 199,860 | 435.15 | 435.14 |
| 011-350-038-000 | 406 S KNOX ST | 36,243 | 150,569 | 186,812 | 435.15 | 435.14 |
| 011-350-039-000 | 426 S KNOX ST | 36,243 | 164,859 | 201,102 | 435.15 | 435.14 |
| 011-350-040-000 | 446 S KNOX ST | 31,066 | 139,385 | 170,451 | 435.15 | 435.14 |
| 011-350-041-000 | 466 S KNOX ST | 31,066 | 148,394 | 179,460 | 435.15 | 435.14 |
| 011-350-042-000 | 486 S KNOX ST | 31,686 | 153,894 | 185,580 | 435.15 | 435.14 |
| 011-350-043-000 | 1297 CHERRY ST | 36,967 | 215,578 | 252,545 | 435.15 | 435.14 |
| 011-350-044-000 | 1287 CHERRY ST | 36,243 | 160,510 | 196,753 | 435.15 | 435.14 |
| 011-350-045-000 | 1277 CHERRY ST | 25,888 | 203,692 | 229,580 | 435.15 | 435.14 |
| 011-350-046-000 | 1267 CHERRY ST | 36,243 | 163,513 | 199,756 | 435.15 | 435.14 |
| 011-350-047-000 | 1257 CHERRY ST | 36,243 | 163,203 | 199,446 | 435.15 | 435.14 |
| 011-350-048-000 | 1247 CHERRY ST | 36,243 | 144,977 | 181,220 | 435.15 | 435.14 |
| 011-350-049-000 | 1237 CHERRY ST | 36,243 | 179,150 | 215,393 | 435.15 | 435.14 |
| 011-350-050-000 | 1227 CHERRY ST | 36,243 | 160,510 | 196,753 | 435.15 | 435.14 |
| 011-350-051-000 | 1217 CHERRY ST | 36,967 | 148,612 | 185,579 | 435.15 | 435.14 |
| 011-350-052-000 | 1207 CHERRY ST | 31,686 | 226,985 | 258,671 | 435.15 | 435.14 |
| 011-350-053-000 | 1197 CHERRY ST | 26,404 | 208,819 | 235,223 | 435.15 | 435.14 |
| 011-350-054-000 | 1187 CHERRY ST | 31,686 | 174,490 | 206,176 | 435.15 | 435.14 |
| 011-350-055-000 | 504 PEACH ST | 36,967 | 177,448 | 214,415 | 435.15 | 435.14 |
| 011-350-056-000 | 524 PEACH ST | 31,066 | 141,870 | 172,936 | 435.15 | 435.14 |
| 011-350-057-000 | 544 PEACH ST | 26,524 | 155,546 | 182,070 | 435.15 | 435.14 |
| 011-350-058-000 | 564 PEACH ST | 31,830 | 169,765 | 201,595 | 435.15 | 435.14 |
| 011-350-059-000 | 584 PEACH ST | 35,700 | 173,400 | 209,100 | 435.15 | 435.14 |
| 011-350-060-000 | 604 PEACH ST | 35,700 | 184,620 | 220,320 | 435.15 | 435.14 |
| 011-350-061-000 | 624 PEACH ST | 31,830 | 161,700 | 193,530 | 435.15 | 435.14 |
| 011-350-062-000 | 644 PEACH ST | 31,830 | 137,510 | 169,340 | 435.15 | 435.14 |
| 011-350-063-000 | 664 PEACH ST | 36,967 | 145,232 | 182,199 | 435.15 | 435.14 |
| 011-350-068-000 | 684 PEACH ST | 36,243 | 160,096 | 196,339 | 435.15 | 435.14 |
| 011-351-001-000 | 649 PEAR ST | 72,157 | 140,449 | 212,606 | 435.15 | 435.14 |
| 011-351-002-000 | 629 PEAR ST | 63,112 | 160,242 | 223,354 | 435.15 | 435.14 |
| 011-351-003-000 | 609 PEAR ST | 64,408 | 157,954 | 222,362 | 435.15 | 435.14 |

City of Madera
Community Facilities District No. 2005-1 (Public Services)
Charge Detail Report (Sorted by Assessor's Parcel Number)

| Assessor's Parcel Number | Situs Address | Land Assessed Value | Structure Assessed Value | Total Assessed Value | Max Tax | 2017/18 Charge |
|--------------------------|-----------------|---------------------|--------------------------|----------------------|---------|----------------|
| 011-351-004-000 | 589 PEAR ST | 44,154 | 93,829 | 137,983 | 435.15 | 435.14 |
| 011-351-005-000 | 569 PEAR ST | 44,154 | 92,726 | 136,880 | 435.15 | 435.14 |
| 011-351-006-000 | 549 PEAR ST | 30,600 | 166,260 | 196,860 | 435.15 | 435.14 |
| 011-351-007-000 | 529 PEAR ST | 30,600 | 171,870 | 202,470 | 435.15 | 435.14 |
| 011-351-008-000 | 519 PEAR ST | 31,066 | 182,153 | 213,219 | 435.15 | 435.14 |
| 011-351-009-000 | 509 PEAR ST | 41,422 | 165,688 | 207,110 | 435.15 | 435.14 |
| 011-351-010-000 | 1427 APPLE ST | 42,439 | 132,416 | 174,855 | 435.15 | 435.14 |
| 011-351-011-000 | 1417 APPLE ST | 44,154 | 93,277 | 137,431 | 435.15 | 435.14 |
| 011-351-012-000 | 1407 APPLE ST | 44,154 | 99,680 | 143,834 | 435.15 | 435.14 |
| 011-351-013-000 | 1397 APPLE ST | 40,800 | 137,700 | 178,500 | 435.15 | 435.14 |
| 011-351-014-000 | 1387 APPLE ST | 33,115 | 125,292 | 158,407 | 435.15 | 435.14 |
| 011-351-015-000 | 516 PEAR ST | 30,600 | 188,700 | 219,300 | 435.15 | 435.14 |
| 011-351-016-000 | 536 PEAR ST | 32,466 | 133,117 | 165,583 | 435.15 | 435.14 |
| 011-351-017-000 | 556 PEAR ST | 33,115 | 147,469 | 180,584 | 435.15 | 435.14 |
| 011-351-018-000 | 576 PEAR ST | 33,115 | 169,667 | 202,782 | 435.15 | 435.14 |
| 011-351-019-000 | 596 PEAR ST | 87,104 | 168,874 | 255,978 | 435.15 | 435.14 |
| 011-351-020-000 | 616 PEAR ST | 30,600 | 163,200 | 193,800 | 435.15 | 435.14 |
| 011-351-021-000 | 636 PEAR ST | 67,901 | 162,970 | 230,871 | 435.15 | 435.14 |
| 011-351-022-000 | 656 PEAR ST | 90,538 | 182,099 | 272,637 | 435.15 | 435.14 |
| 011-351-023-000 | 676 PEAR ST | 31,830 | 155,122 | 186,952 | 435.15 | 435.14 |
| 011-351-024-000 | 696 PEAR ST | 26,404 | 174,596 | 201,000 | 435.15 | 435.14 |
| 011-351-025-000 | 716 PEAR ST | 36,967 | 178,504 | 215,471 | 435.15 | 435.14 |
| 011-351-026-000 | 736 PEAR ST | 31,066 | 160,510 | 191,576 | 435.15 | 435.14 |
| 011-351-027-000 | 756 PEAR ST | 31,066 | 164,652 | 195,718 | 435.15 | 435.14 |
| 011-351-028-000 | 776 PEAR ST | 36,243 | 192,923 | 229,166 | 435.15 | 435.14 |
| 011-351-029-000 | 796 PEAR ST | 31,066 | 167,655 | 198,721 | 435.15 | 435.14 |
| 011-351-030-000 | 713 HACIENDA ST | 32,466 | 136,836 | 169,302 | 435.15 | 435.14 |
| 011-351-031-000 | 693 HACIENDA ST | 31,066 | 150,155 | 181,221 | 435.15 | 435.14 |
| 011-351-032-000 | 673 HACIENDA ST | 27,054 | 113,744 | 140,798 | 435.15 | 435.14 |
| 011-351-033-000 | 653 HACIENDA ST | 30,600 | 147,900 | 178,500 | 435.15 | 435.14 |
| 011-351-034-000 | 633 HACIENDA ST | 32,466 | 133,117 | 165,583 | 435.15 | 435.14 |
| 011-351-035-000 | 613 HACIENDA ST | 35,700 | 146,880 | 182,580 | 435.15 | 435.14 |

City of Madera
Community Facilities District No. 2005-1 (Public Services)
Charge Detail Report (Sorted by Assessor's Parcel Number)

| Assessor's Parcel Number | Situs Address | Land Assessed Value | Structure Assessed Value | Total Assessed Value | Max Tax | 2017/18 Charge |
|--------------------------|---------------------|---------------------|--------------------------|----------------------|---------|----------------|
| 011-351-036-000 | 593 HACIENDA ST | 32,466 | 138,094 | 170,560 | 435.15 | 435.14 |
| 011-351-037-000 | 573 HACIENDA ST | 32,466 | 129,869 | 162,335 | 435.15 | 435.14 |
| 011-351-038-000 | 553 HACIENDA ST | 32,466 | 128,458 | 160,924 | 435.15 | 435.14 |
| 011-351-039-000 | 533 HACIENDA ST | 36,243 | 155,332 | 191,575 | 435.15 | 435.14 |
| 011-351-040-000 | 513 HACIENDA ST | 32,466 | 132,081 | 164,547 | 435.15 | 435.14 |
| 011-351-041-000 | 1367 APPLE CT | 44,154 | 105,752 | 149,906 | 435.15 | 435.14 |
| 011-351-042-000 | 1357 APPLE CT | 44,154 | 102,440 | 146,594 | 435.15 | 435.14 |
| 011-351-043-000 | 1347 APPLE CT | 44,154 | 121,427 | 165,581 | 435.15 | 435.14 |
| 011-351-044-000 | 1337 APPLE CT | 44,154 | 109,064 | 153,218 | 435.15 | 435.14 |
| 011-351-045-000 | 1327 APPLE CT | 44,154 | 124,298 | 168,452 | 435.15 | 435.14 |
| 011-351-046-000 | 1317 APPLE CT | 35,700 | 178,500 | 214,200 | 435.15 | 435.14 |
| 011-351-047-000 | 1307 APPLE CT | 41,422 | 155,332 | 196,754 | 435.15 | 435.14 |
| 011-351-048-000 | 1308 APPLE CT | 33,115 | 129,154 | 162,269 | 435.15 | 435.14 |
| 011-351-049-000 | 1318 APPLE CT | 21,643 | 152,164 | 173,807 | 435.15 | 435.14 |
| 011-351-050-000 | 1328 APPLE CT | 31,066 | 147,048 | 178,114 | 435.15 | 435.14 |
| 011-351-051-000 | 1338 APPLE CT | 33,115 | 112,265 | 145,380 | 435.15 | 435.14 |
| 011-351-052-000 | 1348 APPLE CT | 35,700 | 186,150 | 221,850 | 435.15 | 435.14 |
| 011-351-053-000 | 1358 APPLE CT | 33,115 | 166,688 | 199,803 | 435.15 | 435.14 |
| 011-351-054-000 | 1368 APPLE CT | 33,115 | 147,921 | 181,036 | 435.15 | 435.14 |
| 011-351-060-000 | 1321 POMEGRANATE ST | 36,967 | 149,985 | 186,952 | 435.15 | 435.14 |
| 011-351-061-000 | 1311 POMEGRANATE ST | 37,134 | 110,664 | 147,798 | 435.15 | 435.14 |
| 011-351-062-000 | 1301 POMEGRANATE ST | 26,524 | 140,798 | 167,322 | 435.15 | 435.14 |
| 011-351-063-000 | 602 HACIENDA ST | 36,243 | 207,006 | 243,249 | 435.15 | 435.14 |
| 011-351-064-000 | 622 HACIENDA ST | 43,288 | 125,423 | 168,711 | 435.15 | 435.14 |
| 011-351-065-000 | 642 HACIENDA ST | 21,219 | 158,836 | 180,055 | 435.15 | 435.14 |
| 011-351-066-000 | 662 HACIENDA ST | 30,600 | 173,400 | 204,000 | 435.15 | 435.14 |
| 011-351-067-000 | 682 HACIENDA ST | 31,066 | 147,048 | 178,114 | 435.15 | 435.14 |
| 011-351-068-000 | 702 HACIENDA ST | 54,111 | 129,869 | 183,980 | 435.15 | 435.14 |
| 011-351-069-000 | 711 PERSIMMON ST | 30,600 | 173,400 | 204,000 | 435.15 | 435.14 |
| 011-351-070-000 | 691 PERSIMMON ST | 32,466 | 144,047 | 176,513 | 435.15 | 435.14 |
| 011-351-071-000 | 671 PERSIMMON ST | 31,830 | 147,588 | 179,418 | 435.15 | 435.14 |
| 011-351-072-000 | 651 PERSIMMON ST | 26,524 | 138,251 | 164,775 | 435.15 | 435.14 |

City of Madera
Community Facilities District No. 2005-1 (Public Services)
Charge Detail Report (Sorted by Assessor's Parcel Number)

| Assessor's Parcel Number | Situs Address | Land Assessed Value | Structure Assessed Value | Total Assessed Value | Max Tax | 2017/18 Charge |
|--------------------------|---------------------|---------------------|--------------------------|----------------------|---------|----------------|
| 011-351-073-000 | 631 PERSIMMON ST | 35,700 | 163,200 | 198,900 | 435.15 | 435.14 |
| 011-351-074-000 | 611 PERSIMMON ST | 41,422 | 178,115 | 219,537 | 435.15 | 435.14 |
| 011-351-075-000 | 1312 POMEGRANATE ST | 30,302 | 140,692 | 170,994 | 435.15 | 435.14 |
| 011-351-076-000 | 1302 POMEGRANATE ST | 37,877 | 155,843 | 193,720 | 435.15 | 435.14 |
| 011-351-077-000 | 658 PERSIMMON ST | 43,288 | 128,033 | 171,321 | 435.15 | 435.14 |
| 011-351-078-000 | 678 PERSIMMON ST | 32,466 | 140,780 | 173,246 | 435.15 | 435.14 |
| 011-351-079-000 | 698 PERSIMMON ST | 33,981 | 140,692 | 174,673 | 435.15 | 435.14 |
| 011-351-080-000 | 718 PERSIMMON ST | 27,054 | 164,501 | 191,555 | 435.15 | 435.14 |
| 011-351-086-000 | NO SITUS AVAILABLE | 21,219 | 155,759 | 176,978 | 435.15 | 435.14 |
| 011-352-001-000 | 789 PEAR ST | 31,830 | 149,710 | 181,540 | 435.15 | 435.14 |
| 011-352-002-000 | 769 PEAR ST | 35,700 | 193,800 | 229,500 | 435.15 | 435.14 |
| 011-352-003-000 | 749 PEAR ST | 31,066 | 152,225 | 183,291 | 435.15 | 435.14 |
| 011-352-004-000 | 729 PEAR ST | 31,830 | 139,525 | 171,355 | 435.15 | 435.14 |
| 011-352-005-000 | 709 PEAR ST | 31,830 | 148,119 | 179,949 | 435.15 | 435.14 |
| 011-352-006-000 | 689 PEAR ST | 36,967 | 161,603 | 198,570 | 435.15 | 435.14 |
| 011-352-007-000 | 692 BLUEBERRY LN | 64,647 | 144,368 | 209,015 | 435.15 | 435.14 |
| 011-352-008-000 | 712 BLUEBERRY LN | 71,050 | 144,875 | 215,925 | 435.15 | 435.14 |
| 011-352-009-000 | 732 BLUEBERRY LN | 63,590 | 179,250 | 242,840 | 435.15 | 435.14 |
| 011-352-010-000 | 752 BLUEBERRY LN | 30,600 | 193,800 | 224,400 | 435.15 | 435.14 |
| 011-352-011-000 | 772 BLUEBERRY LN | 31,066 | 201,932 | 232,998 | 435.15 | 435.14 |
| 011-352-012-000 | 792 BLUEBERRY LN | 68,356 | 141,035 | 209,391 | 435.15 | 435.14 |
| 011-352-013-000 | 797 BLUEBERRY LN | 75,335 | 131,318 | 206,653 | 435.15 | 435.14 |
| 011-352-014-000 | 777 BLUEBERRY LN | 79,220 | 169,763 | 248,983 | 435.15 | 435.14 |
| 011-352-015-000 | 757 BLUEBERRY LN | 31,686 | 105,624 | 137,310 | 435.15 | 435.14 |
| 011-352-016-000 | 737 BLUEBERRY LN | 78,836 | 114,880 | 193,716 | 435.15 | 435.14 |
| 011-352-017-000 | 717 BLUEBERRY LN | 35,000 | 190,000 | 225,000 | 435.15 | 435.14 |
| 011-352-018-000 | 697 BLUEBERRY LN | 90,538 | 157,313 | 247,851 | 435.15 | 435.14 |
| 011-352-019-000 | 694 KIWI ST | 31,830 | 164,777 | 196,607 | 435.15 | 435.14 |
| 011-352-020-000 | 714 KIWI ST | 27,054 | 132,359 | 159,413 | 435.15 | 435.14 |
| 011-352-021-000 | 734 KIWI ST | 36,243 | 212,288 | 248,531 | 435.15 | 435.14 |
| 011-352-022-000 | 754 KIWI ST | 36,243 | 192,612 | 228,855 | 435.15 | 435.14 |
| 011-352-023-000 | 774 KIWI ST | 31,066 | 183,707 | 214,773 | 435.15 | 435.14 |

City of Madera
Community Facilities District No. 2005-1 (Public Services)
Charge Detail Report (Sorted by Assessor's Parcel Number)

| Assessor's Parcel Number | Situs Address | Land Assessed Value | Structure Assessed Value | Total Assessed Value | Max Tax | 2017/18 Charge |
|--------------------------|------------------|---------------------|--------------------------|----------------------|---------|----------------|
| 011-352-024-000 | 794 KIWI ST | 41,422 | 155,539 | 196,961 | 435.15 | 435.14 |
| 011-352-025-000 | 791 KIWI ST | 36,243 | 163,203 | 199,446 | 233.26 | 233.26 |
| 011-352-026-000 | 771 KIWI ST | 36,243 | 150,672 | 186,915 | 435.15 | 435.14 |
| 011-352-027-000 | 761 KIWI ST | 25,888 | 212,702 | 238,590 | 435.15 | 435.14 |
| 011-352-028-000 | 751 KIWI ST | 36,243 | 152,847 | 189,090 | 435.15 | 435.14 |
| 011-352-029-000 | 731 KIWI ST | 36,243 | 160,303 | 196,546 | 435.15 | 435.14 |
| 011-352-030-000 | 711 KIWI ST | 36,243 | 140,835 | 177,078 | 435.15 | 435.14 |
| 011-352-031-000 | 691 KIWI ST | 36,243 | 152,329 | 188,572 | 435.15 | 435.14 |
| 011-352-032-000 | 671 KIWI ST | 36,243 | 170,038 | 206,281 | 435.15 | 435.14 |
| 011-352-033-000 | 1498 MANDARIN ST | 41,422 | 158,128 | 199,550 | 435.15 | 435.14 |
| 011-352-034-000 | 1488 MANDARIN ST | 31,066 | 139,696 | 170,762 | 435.15 | 435.14 |
| 011-352-035-000 | 1478 MANDARIN ST | 36,243 | 162,891 | 199,134 | 435.15 | 435.14 |
| 011-352-036-000 | 1468 MANDARIN ST | 36,243 | 175,215 | 211,458 | 435.15 | 435.14 |
| 011-352-037-000 | 1458 MANDARIN ST | 36,243 | 156,679 | 192,922 | 435.15 | 435.14 |
| 011-352-038-000 | 1448 MANDARIN ST | 36,243 | 147,359 | 183,602 | 435.15 | 435.14 |
| 011-352-039-000 | 1438 MANDARIN ST | 36,243 | 162,270 | 198,513 | 435.15 | 435.14 |
| 011-352-040-000 | 1428 MANDARIN ST | 36,243 | 160,510 | 196,753 | 435.15 | 435.14 |
| 011-352-041-000 | 1418 MANDARIN ST | 36,967 | 185,580 | 222,547 | 435.15 | 435.14 |
| 011-353-001-000 | 738 PERSIMMON ST | 32,466 | 122,834 | 155,300 | 435.15 | 435.14 |
| 011-353-002-000 | 758 PERSIMMON ST | 27,054 | 146,861 | 173,915 | 435.15 | 435.14 |
| 011-353-003-000 | 778 PERSIMMON ST | 27,054 | 156,925 | 183,979 | 435.15 | 435.14 |
| 011-353-004-000 | 1306 COCONUT ST | 47,617 | 133,009 | 180,626 | 435.15 | 435.14 |
| 011-353-005-000 | 1316 COCONUT ST | 26,524 | 169,765 | 196,289 | 435.15 | 435.14 |
| 011-353-006-000 | 1326 COCONUT ST | 21,643 | 160,172 | 181,815 | 435.15 | 435.14 |
| 011-353-007-000 | 1336 COCONUT ST | 26,524 | 172,735 | 199,259 | 435.15 | 435.14 |
| 011-353-008-000 | 1346 COCONUT ST | 54,111 | 132,859 | 186,970 | 435.15 | 435.14 |
| 011-353-009-000 | 1356 COCONUT ST | 43,288 | 100,432 | 143,720 | 435.15 | 435.14 |
| 011-353-010-000 | 773 HACIENDA ST | 35,700 | 158,100 | 193,800 | 435.15 | 435.14 |
| 011-353-011-000 | 753 HACIENDA ST | 36,243 | 152,847 | 189,090 | 435.15 | 435.14 |
| 011-353-012-000 | 733 HACIENDA ST | 26,524 | 127,323 | 153,847 | 435.15 | 435.14 |
| 011-353-013-000 | 722 HACIENDA ST | 31,686 | 129,917 | 161,603 | 435.15 | 435.14 |
| 011-353-014-000 | 742 HACIENDA ST | 32,466 | 158,549 | 191,015 | 435.15 | 435.14 |

City of Madera
Community Facilities District No. 2005-1 (Public Services)
Charge Detail Report (Sorted by Assessor's Parcel Number)

| Assessor's Parcel Number | Situs Address | Land Assessed Value | Structure Assessed Value | Total Assessed Value | Max Tax | 2017/18 Charge |
|--------------------------|------------------|---------------------|--------------------------|----------------------|---------|----------------|
| 011-353-015-000 | 751 PERSIMMON ST | 35,700 | 193,800 | 229,500 | 435.15 | 435.14 |
| 011-353-016-000 | 731 PERSIMMON ST | 35,700 | 137,700 | 173,400 | 435.15 | 435.14 |
| 011-360-001-000 | 223 DRAKE ST | 45,000 | 0 | 45,000 | 233.26 | 233.26 |
| 011-360-002-000 | 203 DRAKE ST | 45,000 | 0 | 45,000 | 233.26 | 233.26 |
| 011-360-003-000 | 193 DRAKE ST | 45,000 | 0 | 45,000 | 233.26 | 233.26 |
| 011-360-004-000 | 173 DRAKE ST | 45,000 | 0 | 45,000 | 233.26 | 233.26 |
| 011-360-005-000 | 153 DRAKE ST | 45,000 | 0 | 45,000 | 233.26 | 233.26 |
| 011-360-006-000 | 93 DRAKE ST | 45,000 | 0 | 45,000 | 233.26 | 233.26 |
| 011-360-007-000 | 50 DRAKE ST | 45,000 | 0 | 45,000 | 233.26 | 233.26 |
| 011-360-008-000 | 70 DRAKE ST | 45,000 | 0 | 45,000 | 233.26 | 233.26 |
| 011-360-009-000 | 90 DRAKE ST | 45,000 | 0 | 45,000 | 233.26 | 233.26 |
| 011-360-010-000 | 120 DRAKE ST | 45,000 | 0 | 45,000 | 233.26 | 233.26 |
| 011-360-011-000 | 140 DRAKE ST | 45,000 | 0 | 45,000 | 233.26 | 233.26 |
| 011-360-012-000 | 160 DRAKE ST | 45,000 | 0 | 45,000 | 233.26 | 233.26 |
| 011-360-013-000 | 180 DRAKE ST | 45,000 | 0 | 45,000 | 233.26 | 233.26 |
| 011-360-014-000 | 200 DRAKE ST | 45,000 | 0 | 45,000 | 233.26 | 233.26 |
| 011-360-015-000 | 205 PEERLESS ST | 45,000 | 0 | 45,000 | 233.26 | 233.26 |
| 011-360-016-000 | 185 PEERLESS ST | 45,000 | 0 | 45,000 | 233.26 | 233.26 |
| 011-360-017-000 | 165 PEERLESS ST | 45,000 | 0 | 45,000 | 233.26 | 233.26 |
| 011-360-018-000 | 135 PEERLESS ST | 45,000 | 0 | 45,000 | 233.26 | 233.26 |
| 011-360-019-000 | 115 PEERLESS ST | 45,000 | 0 | 45,000 | 233.26 | 233.26 |
| 011-360-020-000 | 85 PEERLESS ST | 45,000 | 0 | 45,000 | 233.26 | 233.26 |
| 011-360-021-000 | 65 PEERLESS ST | 45,000 | 0 | 45,000 | 233.26 | 233.26 |
| 011-360-022-000 | 45 PEERLESS ST | 45,000 | 0 | 45,000 | 233.26 | 233.26 |
| 011-360-023-000 | 48 PEERLESS ST | 45,000 | 0 | 45,000 | 233.26 | 233.26 |
| 011-360-024-000 | 68 PEERLESS ST | 45,000 | 0 | 45,000 | 233.26 | 233.26 |
| 011-360-025-000 | 88 PEERLESS ST | 45,000 | 0 | 45,000 | 233.26 | 233.26 |
| 011-360-026-000 | 118 PEERLESS ST | 45,000 | 0 | 45,000 | 233.26 | 233.26 |
| 011-360-027-000 | 138 PEERLESS ST | 45,000 | 0 | 45,000 | 233.26 | 233.26 |
| 011-360-028-000 | 168 PEERLESS ST | 45,000 | 0 | 45,000 | 233.26 | 233.26 |
| 011-360-029-000 | 188 PEERLESS ST | 45,000 | 0 | 45,000 | 233.26 | 233.26 |
| 011-360-030-000 | 208 PEERLESS ST | 45,000 | 0 | 45,000 | 233.26 | 233.26 |

City of Madera
Community Facilities District No. 2005-1 (Public Services)
Charge Detail Report (Sorted by Assessor's Parcel Number)

| Assessor's Parcel Number | Situs Address | Land Assessed Value | Structure Assessed Value | Total Assessed Value | Max Tax | 2017/18 Charge |
|--------------------------|----------------|---------------------|--------------------------|----------------------|---------|----------------|
| 011-360-031-000 | 201 SOLANO ST | 45,000 | 0 | 45,000 | 233.26 | 233.26 |
| 011-360-032-000 | 181 SOLANO ST | 45,000 | 0 | 45,000 | 233.26 | 233.26 |
| 011-360-033-000 | 161 SOLANO ST | 45,000 | 0 | 45,000 | 233.26 | 233.26 |
| 011-360-034-000 | 141 SOLANO ST | 45,000 | 0 | 45,000 | 233.26 | 233.26 |
| 011-360-035-000 | 121 SOLANO ST | 45,000 | 0 | 45,000 | 233.26 | 233.26 |
| 011-360-036-000 | 91 SOLANO ST | 45,000 | 0 | 45,000 | 233.26 | 233.26 |
| 011-360-037-000 | 71 SOLANO ST | 45,000 | 0 | 45,000 | 233.26 | 233.26 |
| 011-360-038-000 | 51 SOLANO ST | 45,000 | 0 | 45,000 | 233.26 | 233.26 |
| 011-360-039-000 | 1293 PADRE ST | 45,000 | 0 | 45,000 | 233.26 | 233.26 |
| 011-360-040-000 | 1283 PADRE ST | 45,000 | 0 | 45,000 | 233.26 | 233.26 |
| 011-360-041-000 | 1273 PADRE ST | 45,000 | 0 | 45,000 | 233.26 | 233.26 |
| 011-360-042-000 | 1263 PADRE ST | 45,000 | 0 | 45,000 | 233.26 | 233.26 |
| 011-360-043-000 | 1253 PADRE ST | 45,000 | 0 | 45,000 | 233.26 | 233.26 |
| 011-360-044-000 | 1243 PADRE ST | 45,000 | 0 | 45,000 | 233.26 | 233.26 |
| 011-360-045-000 | 1233 PADRE ST | 45,000 | 0 | 45,000 | 233.26 | 233.26 |
| 011-360-046-000 | 1223 PADRE ST | 45,000 | 0 | 45,000 | 233.26 | 233.26 |
| 011-360-047-000 | 1213 PADRE ST | 45,000 | 0 | 45,000 | 233.26 | 233.26 |
| 011-360-048-000 | 1203 PADRE ST | 45,000 | 0 | 45,000 | 233.26 | 233.26 |
| 011-360-049-000 | 46 SOLANO ST | 45,000 | 0 | 45,000 | 233.26 | 233.26 |
| 011-360-050-000 | 66 SOLANO ST | 45,000 | 0 | 45,000 | 233.26 | 233.26 |
| 011-360-051-000 | 86 SOLANO ST | 45,000 | 0 | 45,000 | 233.26 | 233.26 |
| 011-360-052-000 | 116 SOLANO ST | 45,000 | 0 | 45,000 | 233.26 | 233.26 |
| 011-360-053-000 | 136 SOLANO ST | 45,000 | 0 | 45,000 | 233.26 | 233.26 |
| 011-360-054-000 | 156 SOLANO ST | 45,000 | 0 | 45,000 | 233.26 | 233.26 |
| 011-360-055-000 | 176 SOLANO ST | 45,000 | 0 | 45,000 | 233.26 | 233.26 |
| 011-360-056-000 | 196 SOLANO ST | 45,000 | 0 | 45,000 | 233.26 | 233.26 |
| 011-360-057-000 | 206 SOLANO ST | 45,000 | 0 | 45,000 | 233.26 | 233.26 |
| 011-360-058-000 | 226 SOLANO ST | 45,000 | 0 | 45,000 | 233.26 | 233.26 |
| 011-360-059-000 | 246 SOLANO ST | 45,000 | 0 | 45,000 | 233.26 | 233.26 |
| 011-360-060-000 | 1226 SAURET ST | 45,000 | 0 | 45,000 | 233.26 | 233.26 |
| 011-360-061-000 | 1236 SAURET ST | 45,000 | 0 | 45,000 | 233.26 | 233.26 |
| 011-360-062-000 | 1246 SAURET ST | 45,000 | 0 | 45,000 | 233.26 | 233.26 |

City of Madera
Community Facilities District No. 2005-1 (Public Services)
Charge Detail Report (Sorted by Assessor's Parcel Number)

| Assessor's Parcel Number | Situs Address | Land Assessed Value | Structure Assessed Value | Total Assessed Value | Max Tax | 2017/18 Charge |
|--------------------------|----------------|---------------------|--------------------------|----------------------|---------|----------------|
| 011-360-063-000 | 1256 SAURET ST | 45,000 | 0 | 45,000 | 233.26 | 233.26 |
| 011-360-064-000 | 1266 SAURET ST | 45,000 | 0 | 45,000 | 233.26 | 233.26 |
| 011-360-065-000 | 1276 SAURET ST | 45,000 | 0 | 45,000 | 233.26 | 233.26 |
| 011-360-066-000 | 1286 SAURET ST | 45,000 | 0 | 45,000 | 233.26 | 233.26 |
| 011-360-067-000 | 1296 SAURET ST | 45,000 | 0 | 45,000 | 233.26 | 233.26 |
| 011-361-001-000 | 266 SOLANO ST | 45,000 | 0 | 45,000 | 233.26 | 233.26 |
| 011-361-002-000 | 286 SOLANO ST | 45,000 | 0 | 45,000 | 233.26 | 233.26 |
| 011-361-003-000 | 316 SOLANO ST | 45,000 | 0 | 45,000 | 233.26 | 233.26 |
| 011-361-004-000 | 336 SOLANO ST | 45,000 | 0 | 45,000 | 233.26 | 233.26 |
| 011-361-005-000 | 356 SOLANO ST | 45,000 | 0 | 45,000 | 233.26 | 233.26 |
| 011-361-006-000 | 376 SOLANO ST | 45,000 | 0 | 45,000 | 233.26 | 233.26 |
| 011-361-007-000 | 396 SOLANO ST | 45,000 | 0 | 45,000 | 233.26 | 233.26 |
| 011-361-008-000 | 406 SOLANO ST | 45,000 | 0 | 45,000 | 233.26 | 233.26 |
| 011-361-009-000 | 1234 CARMEL ST | 45,000 | 0 | 45,000 | 233.26 | 233.26 |
| 011-361-010-000 | 1244 CARMEL ST | 45,000 | 0 | 45,000 | 233.26 | 233.26 |
| 011-361-011-000 | 1254 CARMEL ST | 45,000 | 0 | 45,000 | 233.26 | 233.26 |
| 011-361-012-000 | 1264 CARMEL ST | 45,000 | 0 | 45,000 | 233.26 | 233.26 |
| 011-361-013-000 | 1274 CARMEL ST | 45,000 | 0 | 45,000 | 233.26 | 233.26 |
| 011-361-014-000 | 1275 MILOW ST | 45,000 | 0 | 45,000 | 233.26 | 233.26 |
| 011-361-015-000 | 1265 MILOW ST | 45,000 | 0 | 45,000 | 233.26 | 233.26 |
| 011-361-016-000 | 1255 MILOW ST | 45,000 | 0 | 45,000 | 233.26 | 233.26 |
| 011-361-017-000 | 1245 MILOW ST | 45,000 | 0 | 45,000 | 233.26 | 233.26 |
| 011-361-018-000 | 1235 MILOW ST | 45,000 | 0 | 45,000 | 233.26 | 233.26 |
| 011-361-019-000 | 1238 MILOW ST | 45,000 | 0 | 45,000 | 233.26 | 233.26 |
| 011-361-020-000 | 1248 MILOW ST | 45,000 | 0 | 45,000 | 233.26 | 233.26 |
| 011-361-021-000 | 1258 MILOW ST | 45,000 | 0 | 45,000 | 233.26 | 233.26 |
| 011-361-022-000 | 1268 MILOW ST | 45,000 | 0 | 45,000 | 233.26 | 233.26 |
| 011-361-023-000 | 1278 MILOW ST | 45,000 | 0 | 45,000 | 233.26 | 233.26 |
| 011-361-024-000 | 1288 MILOW ST | 45,000 | 0 | 45,000 | 233.26 | 233.26 |
| 011-361-025-000 | 1298 MILOW ST | 45,000 | 0 | 45,000 | 233.26 | 233.26 |
| 011-361-026-000 | 393 FRITZ ST | 45,000 | 0 | 45,000 | 233.26 | 233.26 |
| 011-361-027-000 | 373 FRITZ ST | 45,000 | 0 | 45,000 | 233.26 | 233.26 |

City of Madera
Community Facilities District No. 2005-1 (Public Services)
Charge Detail Report (Sorted by Assessor's Parcel Number)

| Assessor's Parcel Number | Situs Address | Land Assessed Value | Structure Assessed Value | Total Assessed Value | Max Tax | 2017/18 Charge |
|--------------------------|------------------|---------------------|--------------------------|----------------------|---------|----------------|
| 011-361-028-000 | 353 FRITZ ST | 45,000 | 0 | 45,000 | 233.26 | 233.26 |
| 011-361-029-000 | 333 FRITZ ST | 45,000 | 0 | 45,000 | 233.26 | 233.26 |
| 011-361-030-000 | 313 FRITZ ST | 45,000 | 0 | 45,000 | 233.26 | 233.26 |
| 011-361-031-000 | 283 FRITZ ST | 45,000 | 0 | 45,000 | 233.26 | 233.26 |
| 011-361-032-000 | 1291 CARMEL ST | 45,000 | 0 | 45,000 | 233.26 | 233.26 |
| 011-361-033-000 | 1271 CARMEL ST | 45,000 | 0 | 45,000 | 233.26 | 233.26 |
| 011-361-034-000 | 1261 CARMEL ST | 45,000 | 0 | 45,000 | 233.26 | 233.26 |
| 011-361-035-000 | 1251 CARMEL ST | 45,000 | 0 | 45,000 | 233.26 | 233.26 |
| 011-361-036-000 | 1241 CARMEL ST | 45,000 | 0 | 45,000 | 233.26 | 233.26 |
| 011-361-037-000 | 1231 CARMEL ST | 45,000 | 0 | 45,000 | 233.26 | 233.26 |
| 012-254-005-000 | 1172 DIAMOND WAY | 25,888 | 0 | 25,888 | 233.26 | 233.26 |
| 012-254-006-000 | 1154 DIAMOND WAY | 49,994 | 99,986 | 149,980 | 435.15 | 435.14 |
| 012-254-007-000 | 1136 DIAMOND WAY | 57,978 | 115,958 | 173,936 | 435.15 | 435.14 |
| 012-254-008-000 | 1118 DIAMOND WAY | 64,502 | 129,002 | 193,504 | 435.15 | 435.14 |
| 012-254-009-000 | 1100 DIAMOND WAY | 77,914 | 156,516 | 234,430 | 435.15 | 435.14 |
| 012-254-010-000 | 1094 DIAMOND WAY | 85,498 | 169,619 | 255,117 | 435.15 | 435.14 |
| 012-254-011-000 | 1078 DIAMOND WAY | 25,888 | 0 | 25,888 | 233.26 | 233.26 |
| 012-254-012-000 | 1060 DIAMOND WAY | 25,888 | 0 | 25,888 | 233.26 | 233.26 |
| 012-254-013-000 | 1042 DIAMOND WAY | 25,888 | 0 | 25,888 | 233.26 | 233.26 |
| 012-254-014-000 | 1024 DIAMOND WAY | 25,888 | 144,255 | 170,143 | 435.15 | 435.14 |
| 012-254-015-000 | 1006 DIAMOND WAY | 25,888 | 149,342 | 175,230 | 435.15 | 435.14 |
| 012-254-016-000 | 303 JOYA DR | 25,888 | 144,255 | 170,143 | 435.15 | 435.14 |
| 012-254-017-000 | 309 JOYA DR | 25,888 | 149,554 | 175,442 | 435.15 | 435.14 |
| 012-254-018-000 | 319 JOYA DR | 25,888 | 127,176 | 153,064 | 435.15 | 435.14 |
| 012-254-019-000 | 349 JOYA DR | 25,888 | 136,680 | 162,568 | 435.15 | 435.14 |
| 012-254-020-000 | 365 JOYA DR | 25,888 | 154,020 | 179,908 | 435.15 | 435.14 |
| 012-254-021-000 | 381 JOYA DR | 25,888 | 137,376 | 163,264 | 435.15 | 435.14 |
| 012-254-022-000 | 393 JOYA DR | 25,888 | 124,266 | 150,154 | 435.15 | 435.14 |
| 012-254-023-000 | 415 JOYA DR | 25,500 | 139,799 | 165,299 | 435.15 | 435.14 |
| 012-254-024-000 | 437 JOYA DR | 25,500 | 124,266 | 149,766 | 435.15 | 435.14 |
| 012-254-025-000 | 461 JOYA DR | 25,888 | 125,301 | 151,189 | 435.15 | 435.14 |
| 012-254-026-000 | 473 JOYA DR | 25,888 | 90,092 | 115,980 | 435.15 | 435.14 |

City of Madera
Community Facilities District No. 2005-1 (Public Services)
Charge Detail Report (Sorted by Assessor's Parcel Number)

| Assessor's Parcel Number | Situs Address | Land Assessed Value | Structure Assessed Value | Total Assessed Value | Max Tax | 2017/18 Charge |
|--------------------------|----------------|---------------------|--------------------------|----------------------|---------|----------------|
| 012-254-027-000 | 495 JOYA DR | 53,383 | 107,881 | 161,264 | 435.15 | 435.14 |
| 012-254-028-000 | 513 JOYA DR | 33,115 | 66,232 | 99,347 | 435.15 | 435.14 |
| 012-254-029-000 | 535 JOYA DR | 30,864 | 102,914 | 133,778 | 435.15 | 435.14 |
| 012-254-030-000 | 557 JOYA DR | 58,945 | 116,779 | 175,724 | 435.15 | 435.14 |
| 012-254-031-000 | 556 JOYA DR | 64,024 | 129,154 | 193,178 | 435.15 | 435.14 |
| 012-254-032-000 | 534 JOYA DR | 47,821 | 96,761 | 144,582 | 435.15 | 435.14 |
| 012-254-033-000 | 512 JOYA DR | 38,442 | 107,432 | 145,874 | 435.15 | 435.14 |
| 012-254-034-000 | 494 JOYA DR | 26,404 | 143,648 | 170,052 | 435.15 | 435.14 |
| 012-254-035-000 | 472 JOYA DR | 54,642 | 110,074 | 164,716 | 435.15 | 435.14 |
| 012-254-036-000 | 460 JOYA DR | 30,600 | 0 | 30,600 | 233.26 | 233.26 |
| 012-254-037-000 | 436 JOYA DR | 30,600 | 0 | 30,600 | 233.26 | 233.26 |
| 012-254-038-000 | 414 JOYA DR | 30,600 | 0 | 30,600 | 233.26 | 233.26 |
| 012-254-039-000 | 392 JOYA DR | 30,600 | 0 | 30,600 | 233.26 | 233.26 |
| 012-254-040-000 | 380 JOYA DR | 30,600 | 0 | 30,600 | 233.26 | 233.26 |
| 012-254-041-000 | 364 JOYA DR | 30,600 | 0 | 30,600 | 233.26 | 233.26 |
| 012-254-042-000 | 348 JOYA DR | 30,600 | 0 | 30,600 | 233.26 | 233.26 |
| 012-254-043-000 | 316 JOYA DR | 30,600 | 0 | 30,600 | 233.26 | 233.26 |
| 012-254-044-000 | 306 JOYA DR | 30,600 | 0 | 30,600 | 233.26 | 233.26 |
| 012-254-045-000 | 307 BO TREE LN | 30,600 | 0 | 30,600 | 233.26 | 233.26 |
| 012-254-046-000 | 317 BO TREE LN | 30,600 | 0 | 30,600 | 233.26 | 233.26 |
| 012-254-047-000 | 345 BO TREE LN | 30,600 | 0 | 30,600 | 233.26 | 233.26 |
| 012-254-048-000 | 361 BO TREE LN | 30,600 | 0 | 30,600 | 233.26 | 233.26 |
| 012-254-049-000 | 379 BO TREE LN | 30,600 | 0 | 30,600 | 233.26 | 233.26 |
| 012-254-050-000 | 395 BO TREE LN | 30,600 | 0 | 30,600 | 233.26 | 233.26 |
| 012-254-051-000 | 411 BO TREE LN | 30,600 | 0 | 30,600 | 233.26 | 233.26 |
| 012-254-052-000 | 433 BO TREE LN | 30,600 | 0 | 30,600 | 233.26 | 233.26 |
| 012-254-053-000 | 463 BO TREE LN | 30,600 | 0 | 30,600 | 233.26 | 233.26 |
| 012-254-054-000 | 475 BO TREE LN | 30,600 | 0 | 30,600 | 233.26 | 233.26 |
| 012-254-055-000 | 497 BO TREE LN | 30,600 | 0 | 30,600 | 233.26 | 233.26 |
| 012-254-056-000 | 517 BO TREE LN | 30,600 | 0 | 30,600 | 233.26 | 233.26 |
| 012-254-057-000 | 539 BO TREE LN | 30,600 | 0 | 30,600 | 233.26 | 233.26 |
| 012-254-058-000 | 561 BO TREE LN | 30,600 | 0 | 30,600 | 233.26 | 233.26 |

City of Madera
Community Facilities District No. 2005-1 (Public Services)
Charge Detail Report (Sorted by Assessor's Parcel Number)

| Assessor's Parcel Number | Situs Address | Land Assessed Value | Structure Assessed Value | Total Assessed Value | Max Tax | 2017/18 Charge |
|--------------------------|--------------------|---------------------|--------------------------|----------------------|---------|----------------|
| 012-254-059-000 | 1113 CRYSTAL WAY | 25,888 | 0 | 25,888 | 233.26 | 233.26 |
| 012-254-060-000 | 1139 CRYSTAL WAY | 25,888 | 0 | 25,888 | 233.26 | 233.26 |
| 012-254-061-000 | 1157 CRYSTAL WAY | 25,888 | 0 | 25,888 | 233.26 | 233.26 |
| 012-254-062-000 | 1177 CRYSTAL WAY | 25,888 | 0 | 25,888 | 233.26 | 233.26 |
| 012-254-063-000 | 1180 CRYSTAL WAY | 21,124 | 0 | 21,124 | 233.26 | 233.26 |
| 012-254-064-000 | 1162 CRYSTAL WAY | 21,124 | 0 | 21,124 | 233.26 | 233.26 |
| 012-254-065-000 | 1144 CRYSTAL WAY | 21,124 | 0 | 21,124 | 233.26 | 233.26 |
| 012-254-066-000 | 486 BO TREE LN | 25,888 | 0 | 25,888 | 233.26 | 233.26 |
| 012-254-067-000 | 470 BO TREE LN | 25,888 | 0 | 25,888 | 233.26 | 233.26 |
| 012-254-068-000 | 448 BO TREE LN | 25,888 | 0 | 25,888 | 233.26 | 233.26 |
| 012-254-069-000 | 420 BO TREE LN | 25,888 | 0 | 25,888 | 233.26 | 233.26 |
| 012-254-070-000 | 1147 MAJESTIC WAY | 30,600 | 0 | 30,600 | 233.26 | 233.26 |
| 012-254-071-000 | 1165 MAJESTIC WAY | 21,124 | 0 | 21,124 | 233.26 | 233.26 |
| 012-254-072-000 | 1183 MAJESTIC WAY | 21,124 | 0 | 21,124 | 233.26 | 233.26 |
| 012-254-073-000 | 1178 MAJESTIC WAY | 21,124 | 0 | 21,124 | 233.26 | 233.26 |
| 012-254-074-000 | 1160 MAJESTIC WAY | 21,124 | 0 | 21,124 | 233.26 | 233.26 |
| 012-254-075-000 | 1142 MAJESTIC WAY | 21,124 | 0 | 21,124 | 233.26 | 233.26 |
| 012-254-076-000 | 380 BO TREE LN | 21,124 | 0 | 21,124 | 233.26 | 233.26 |
| 012-254-077-000 | 362 BO TREE LN | 21,124 | 0 | 21,124 | 233.26 | 233.26 |
| 012-254-078-000 | 346 BO TREE LN | 21,124 | 0 | 21,124 | 233.26 | 233.26 |
| 012-254-079-000 | 312 BO TREE LN | 21,124 | 0 | 21,124 | 435.15 | 435.14 |
| 012-254-080-000 | 1145 DIAMOND WAY | 21,124 | 0 | 21,124 | 233.26 | 233.26 |
| 012-254-081-000 | 1163 DIAMOND WAY | 21,124 | 0 | 21,124 | 233.26 | 233.26 |
| 012-254-082-000 | 1181 DIAMOND WAY | 21,124 | 0 | 21,124 | 233.26 | 233.26 |
| 012-460-006-000 | NO SITUS AVAILABLE | 257,799 | 8,584 | 266,383 | 435.15 | 435.14 |
| 012-470-001-000 | 1699 MUNRAS AVE | 63,992 | 123,787 | 187,779 | 435.15 | 435.14 |
| 012-470-002-000 | 1693 MUNRAS AVE | 27,376 | 0 | 27,376 | 233.26 | 233.26 |
| 012-470-003-000 | 1687 MUNRAS AVE | 27,376 | 0 | 27,376 | 233.26 | 233.26 |
| 012-470-004-000 | 1681 MUNRAS AVE | 27,376 | 0 | 27,376 | 233.26 | 233.26 |
| 012-470-005-000 | 1675 MUNRAS AVE | 27,376 | 0 | 27,376 | 233.26 | 233.26 |
| 012-470-006-000 | 1663 MUNRAS AVE | 27,376 | 0 | 27,376 | 233.26 | 233.26 |
| 012-470-007-000 | 1659 MUNRAS AVE | 40,000 | 186,000 | 226,000 | 233.26 | 233.26 |

City of Madera
Community Facilities District No. 2005-1 (Public Services)
Charge Detail Report (Sorted by Assessor's Parcel Number)

| Assessor's Parcel Number | Situs Address | Land Assessed Value | Structure Assessed Value | Total Assessed Value | Max Tax | 2017/18 Charge |
|--------------------------|--------------------|---------------------|--------------------------|----------------------|---------|----------------|
| 012-470-008-000 | 1647 MUNRAS AVE | 38,634 | 93,829 | 132,463 | 435.15 | 435.14 |
| 012-470-009-000 | 1635 MUNRAS AVE | 47,821 | 101,323 | 149,144 | 435.15 | 435.14 |
| 012-470-010-000 | 1621 MUNRAS AVE | 74,910 | 160,791 | 235,701 | 435.15 | 435.14 |
| 012-470-011-000 | 1601 MUNRAS AVE | 47,466 | 100,230 | 147,696 | 435.15 | 435.14 |
| 012-470-012-000 | 1599 MUNRAS AVE | 57,087 | 109,055 | 166,142 | 435.15 | 435.14 |
| 012-470-013-000 | 1591 MUNRAS AVE | 32,466 | 133,117 | 165,583 | 435.15 | 435.14 |
| 012-470-014-000 | 1583 MUNRAS AVE | 53,680 | 106,851 | 160,531 | 435.15 | 435.14 |
| 012-470-015-000 | 1571 MUNRAS AVE | 38,831 | 78,777 | 117,608 | 435.15 | 435.14 |
| 012-470-016-000 | 1555 MUNRAS AVE | 36,720 | 157,080 | 193,800 | 435.15 | 435.14 |
| 012-470-017-000 | 1537 MUNRAS AVE | 31,830 | 106,103 | 137,933 | 435.15 | 435.14 |
| 012-470-018-000 | 1519 MUNRAS AVE | 41,148 | 83,412 | 124,560 | 435.15 | 435.14 |
| 012-470-019-000 | 1501 MUNRAS AVE | 63,399 | 126,486 | 189,885 | 435.15 | 435.14 |
| 012-470-020-000 | 647 SAN ANGELO AVE | 43,050 | 86,765 | 129,815 | 435.15 | 435.14 |
| 012-470-021-000 | 667 SAN ANGELO AVE | 53,222 | 107,230 | 160,452 | 435.15 | 435.14 |
| 012-470-022-000 | 687 SAN ANGELO AVE | 66,556 | 134,100 | 200,656 | 435.15 | 435.14 |
| 012-470-023-000 | 727 SAN ANGELO AVE | 43,050 | 87,206 | 130,256 | 435.15 | 435.14 |
| 012-470-024-000 | 747 SAN ANGELO AVE | 21,219 | 110,877 | 132,096 | 435.15 | 435.14 |
| 012-470-025-000 | 767 SAN ANGELO AVE | 46,832 | 144,082 | 190,914 | 435.15 | 435.14 |
| 012-470-026-000 | 787 SAN ANGELO AVE | 59,577 | 120,540 | 180,117 | 435.15 | 435.14 |
| 012-470-027-000 | 788 SAN ANGELO AVE | 65,639 | 132,415 | 198,054 | 435.15 | 435.14 |
| 012-470-028-000 | 768 SAN ANGELO AVE | 46,536 | 93,829 | 140,365 | 435.15 | 435.14 |
| 012-470-029-000 | 748 SAN ANGELO AVE | 32,466 | 95,237 | 127,703 | 435.15 | 435.14 |
| 012-470-030-000 | 728 SAN ANGELO AVE | 26,524 | 111,407 | 137,931 | 435.15 | 435.14 |
| 012-470-031-000 | 688 SAN ANGELO AVE | 50,421 | 100,788 | 151,209 | 435.15 | 435.14 |
| 012-470-032-000 | 668 SAN ANGELO AVE | 49,674 | 101,446 | 151,120 | 435.15 | 435.14 |
| 012-470-033-000 | 648 SAN ANGELO AVE | 47,709 | 96,528 | 144,237 | 435.15 | 435.14 |
| 012-470-034-000 | 649 BERNARDI AVE | 59,332 | 117,752 | 177,084 | 435.15 | 435.14 |
| 012-470-035-000 | 669 BERNARDI AVE | 38,925 | 77,852 | 116,777 | 435.15 | 435.14 |
| 012-470-036-000 | 689 BERNARDI AVE | 41,049 | 83,215 | 124,264 | 435.15 | 435.14 |
| 012-470-037-000 | 729 BERNARDI AVE | 32,466 | 99,567 | 132,033 | 435.15 | 435.14 |
| 012-470-038-000 | 749 BERNARDI AVE | 57,830 | 114,556 | 172,386 | 435.15 | 435.14 |
| 012-470-039-000 | 769 BERNARDI AVE | 35,700 | 132,600 | 168,300 | 435.15 | 435.14 |

City of Madera
Community Facilities District No. 2005-1 (Public Services)
Charge Detail Report (Sorted by Assessor's Parcel Number)

| Assessor's Parcel Number | Situs Address | Land Assessed Value | Structure Assessed Value | Total Assessed Value | Max Tax | 2017/18 Charge |
|--------------------------|--------------------|---------------------|--------------------------|----------------------|---------|----------------|
| 012-470-040-000 | 789 BERNARDI AVE | 23,092 | 137,449 | 160,541 | 435.15 | 435.14 |
| 012-470-041-000 | 790 BERNARDI AVE | 55,606 | 111,218 | 166,824 | 435.15 | 435.14 |
| 012-470-042-000 | 770 BERNARDI AVE | 45,900 | 161,160 | 207,060 | 435.15 | 435.14 |
| 012-470-043-000 | 750 BERNARDI AVE | 54,512 | 108,964 | 163,476 | 435.15 | 435.14 |
| 012-470-044-000 | 730 BERNARDI AVE | 47,821 | 96,761 | 144,582 | 435.15 | 435.14 |
| 012-470-045-000 | 690 BERNARDI AVE | 9,936 | 84,915 | 94,851 | 435.15 | 435.14 |
| 012-470-046-000 | 670 BERNARDI AVE | 26,524 | 100,797 | 127,321 | 435.15 | 435.14 |
| 012-470-047-000 | 650 BERNARDI AVE | 72,101 | 144,726 | 216,827 | 435.15 | 435.14 |
| 012-470-048-000 | 651 SAN ANDREA AVE | 34,486 | 155,337 | 189,823 | 435.15 | 435.14 |
| 012-470-049-000 | 671 SAN ANDREA AVE | 36,243 | 174,490 | 210,733 | 435.15 | 435.14 |
| 012-470-050-000 | 691 SAN ANDREA AVE | 35,503 | 69,788 | 105,291 | 435.15 | 435.14 |
| 012-470-051-000 | 731 SAN ANDREA AVE | 33,697 | 156,352 | 190,049 | 435.15 | 435.14 |
| 012-470-052-000 | 751 SAN ANDREA AVE | 34,486 | 149,790 | 184,276 | 435.15 | 435.14 |
| 012-470-053-000 | 771 SAN ANDREA AVE | 21,219 | 137,934 | 159,153 | 435.15 | 435.14 |
| 012-470-054-000 | 791 SAN ANDREA AVE | 36,243 | 169,726 | 205,969 | 435.15 | 435.14 |
| 012-470-055-000 | 792 SAN ANDREA AVE | 35,700 | 184,518 | 220,218 | 435.15 | 435.14 |
| 012-470-056-000 | 772 SAN ANDREA AVE | 61,169 | 122,340 | 183,509 | 435.15 | 435.14 |
| 012-470-057-000 | 752 SAN ANDREA AVE | 35,700 | 184,518 | 220,218 | 435.15 | 435.14 |
| 012-470-058-000 | 732 SAN ANDREA AVE | 35,700 | 188,598 | 224,298 | 233.26 | 233.26 |
| 012-470-059-000 | 692 SAN ANDREA AVE | 72,102 | 145,025 | 217,127 | 435.15 | 435.14 |
| 012-470-060-000 | 672 SAN ANDREA AVE | 32,508 | 111,111 | 143,619 | 435.15 | 435.14 |
| 012-470-061-000 | 652 SAN ANDREA AVE | 41,148 | 81,187 | 122,335 | 435.15 | 435.14 |
| 012-470-062-000 | 653 SAN MARCO AVE | 66,822 | 133,958 | 200,780 | 435.15 | 435.14 |
| 012-470-063-000 | 673 SAN MARCO AVE | 27,376 | 0 | 27,376 | 233.26 | 233.26 |
| 012-470-064-000 | 693 SAN MARCO AVE | 27,376 | 0 | 27,376 | 233.26 | 233.26 |
| 012-470-065-000 | 733 SAN MARCO AVE | 36,000 | 175,900 | 211,900 | 435.15 | 435.14 |
| 012-470-066-000 | 753 SAN MARCO AVE | 38,000 | 173,900 | 211,900 | 435.15 | 435.14 |
| 012-470-067-000 | 773 SAN MARCO AVE | 35,700 | 209,100 | 244,800 | 435.15 | 435.14 |
| 012-470-068-000 | 793 SAN MARCO AVE | 40,800 | 183,600 | 224,400 | 233.26 | 233.26 |
| 012-470-069-000 | 794 SAN MARCO AVE | 45,000 | 180,400 | 225,400 | 233.26 | 233.26 |
| 012-470-070-000 | 774 SAN MARCO AVE | 34,486 | 166,433 | 200,919 | 435.15 | 435.14 |
| 012-470-071-000 | 754 SAN MARCO AVE | 40,000 | 190,900 | 230,900 | 233.26 | 233.26 |

City of Madera
Community Facilities District No. 2005-1 (Public Services)
Charge Detail Report (Sorted by Assessor's Parcel Number)

| Assessor's Parcel Number | Situs Address | Land Assessed Value | Structure Assessed Value | Total Assessed Value | Max Tax | 2017/18 Charge |
|--------------------------|--------------------|---------------------|--------------------------|----------------------|---------------------|---------------------|
| 012-470-072-000 | 734 SAN MARCO AVE | 27,376 | 0 | 27,376 | 233.26 | 233.26 |
| 012-470-073-000 | 694 SAN MARCO AVE | 27,376 | 0 | 27,376 | 435.15 | 435.14 |
| 012-470-074-000 | 674 SAN MARCO AVE | 27,376 | 0 | 27,376 | 233.26 | 233.26 |
| 012-470-075-000 | 654 SAN MARCO AVE | 27,376 | 0 | 27,376 | 233.26 | 233.26 |
| 012-470-076-000 | 655 SAINT MARY AVE | 27,376 | 0 | 27,376 | 233.26 | 233.26 |
| 012-470-077-000 | 675 SAINT MARY AVE | 45,000 | 188,000 | 233,000 | 233.26 | 233.26 |
| 012-470-078-000 | 695 SAINT MARY AVE | 27,376 | 0 | 27,376 | 233.26 | 233.26 |
| 012-470-079-000 | 735 SAINT MARY AVE | 27,376 | 0 | 27,376 | 233.26 | 233.26 |
| 012-470-080-000 | 755 SAINT MARY AVE | 34,486 | 122,051 | 156,537 | 435.15 | 435.14 |
| 012-470-081-000 | 775 SAINT MARY AVE | 34,486 | 122,051 | 156,537 | 435.15 | 435.14 |
| 012-470-082-000 | 795 SAINT MARY AVE | 34,486 | 122,051 | 156,537 | 435.15 | 435.14 |
| Total: | | \$34,917,100 | \$107,696,099 | \$142,613,199 | \$357,325.79 | \$357,318.94 |
| Parcel Count: | | | | | | 939 |

EXHIBIT B

CITY OF MADERA COMMUNITY FACILITIES DISTRICT NO. 2005-1 (PUBLIC SERVICES)

Boundary Diagram

SHEET 1 OF 4

AMENDED BOUNDARY MAP OF CITY OF MADERA
COMMUNITY FACILITIES DISTRICT NO. 2005-1
(PUBLIC SERVICES)

CITY OF MADERA
COUNTY OF MADERA
STATE OF CALIFORNIA

THE AMENDED BOUNDARY MAP SUPERSEDES AND REPLACES IN ITS ENTIRETY THE BOUNDARY MAP PREVIOUSLY RECORDED IN BOOK 4 OF SALES OF ASSIGNMENTS AND COMMUNITY FACILITIES DISTRICTS IN PARCEL NO. 100000-00, IN THE OFFICE OF THE COUNTY RECORDER FOR THE COUNTY OF MADERA, STATE OF CALIFORNIA, ON OCTOBER 1, 2005.

FILED IN THE OFFICE OF THE CITY CLERK THIS _____ DAY OF _____, 2005.

I HEREBY CERTIFY THAT THE VOTED MAP SHOWING PROPOSED BOUNDARIES OF CITY OF MADERA COMMUNITY FACILITIES DISTRICT NO. 2005-1, IN PARCEL NO. 100000-00, AS SHOWN BY THE CITY ENGINEER, IN THE OFFICE OF THE COUNTY RECORDER FOR THE COUNTY OF MADERA, STATE OF CALIFORNIA, HELD ON THE _____ DAY OF _____, 2005, BY ITS REGULATION NO. _____.

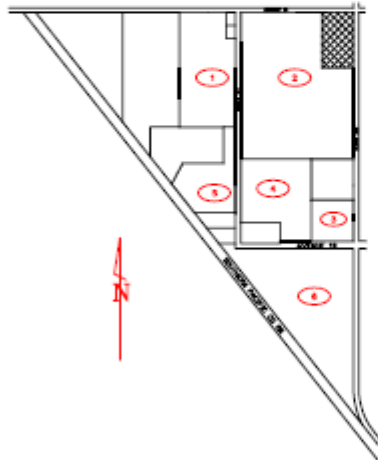
CITY CLERK
CITY OF MADERA

FILED THIS _____ DAY OF _____, 2005, AT THE HOUR OF _____ OF THE AFTERNOON IN THE OFFICE OF THE COUNTY RECORDER FOR THE COUNTY OF MADERA, STATE OF CALIFORNIA.

COUNTY RECORDER
COUNTY OF MADERA
STATE OF CALIFORNIA

THE LINES AND DIMENSIONS OF EACH LOT OR PARCEL SHOWN ON THIS DRAWING SHALL BE FINAL, LINES AND DIMENSIONS AS SHOWN ON THE MADERA COUNTY ASSIGNMENTS MAPS FOR THESE PARCELS LOTS.

THE MADERA COUNTY ASSIGNMENTS MAPS SHALL GOVERN FOR ALL DETAILS CONCERNING THE LINES AND DIMENSIONS OF EACH LOT OR PARCEL.



- LEGEND**
- AMENDED BOUNDARY
 - ASSIGNMENT NUMBER
 - NOT A PART OF

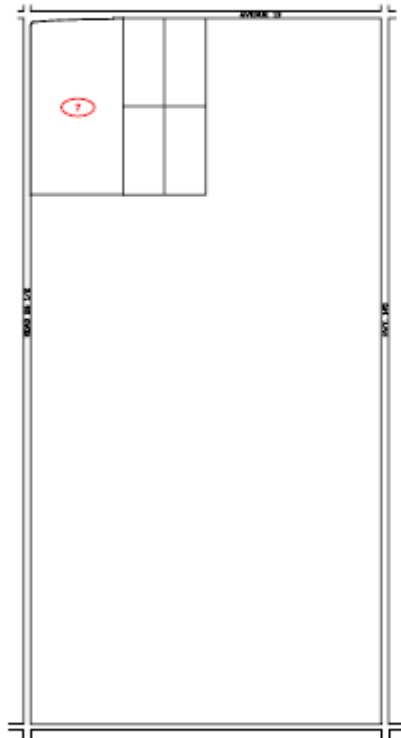
| LOT | ASSIGNMENT NUMBER |
|-----|-------------------|
| 1 | 100000-00 |
| 2 | 100000-00 |
| 3 | 100000-00 |
| 4 | 100000-00 |
| 5 | 100000-00 |
| 6 | 100000-00 |
| 7 | 100000-00 |



SHEET 2 OF 4

AMENDED BOUNDARY MAP OF CITY OF MADERA
COMMUNITY FACILITIES DISTRICT NO. 2005-1
(PUBLIC SERVICES)

CITY OF MADERA
COUNTY OF MADERA
STATE OF CALIFORNIA



LEGEND
 — AMENDOR BOUNDARY
 (1) ASSIGNMENT NUMBER

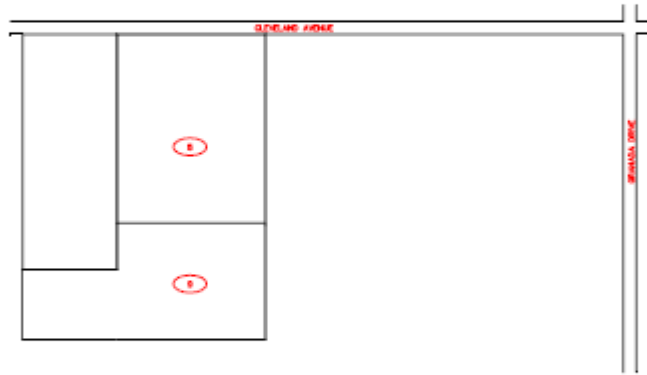
| | |
|-------|--------|
| NO. 1 | 2005-1 |
| 1 | 2005-1 |

 **MuniFinancial**
 27000 Via Antares
 Suite 101
 Fremont, California 94538-2000
 Phone (510) 597-9800 Fax (510) 597-9800

SHEET 3 OF 4

AMENDED BOUNDARY MAP OF CITY OF MADERA
COMMUNITY FACILITIES DISTRICT NO. 2005-1
(PUBLIC SERVICES)

CITY OF MADERA
COUNTY OF MADERA
STATE OF CALIFORNIA



LEGEND
 AMENDATION BOUNDARY
 ASSESSMENT NUMBER

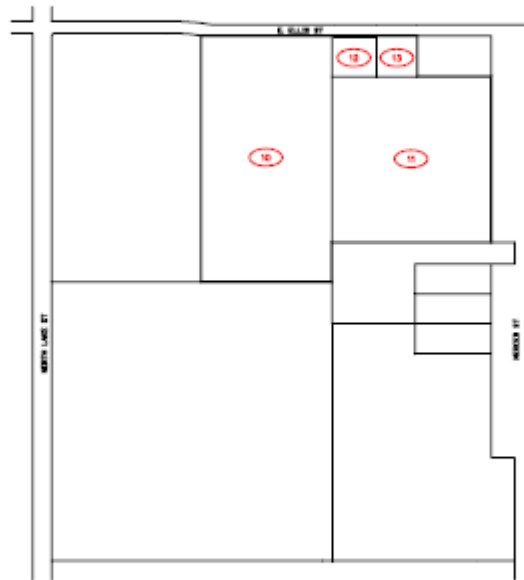
| DATE | DESCRIPTION |
|------|--------------|
| 1 | NO. 2005-101 |
| 1 | NO. 2005-102 |

 **MuniFinancial**
 27000 Via Antares
 Suite 200
 Fremont, California 94538-2000
 Phone (510) 597-9800 Fax (510) 597-9803

SHEET 4 OF 4

AMENDED BOUNDARY MAP OF CITY OF MADERA
COMMUNITY FACILITIES DISTRICT NO. 2005-1
(PUBLIC SERVICES)

CITY OF MADERA
COUNTY OF MADERA
STATE OF CALIFORNIA



LEGEND
 AMENDED BOUNDARY
 ASSESSMENT NUMBER

| ASSESSMENT NUMBER | ASSESSMENT NAME |
|-------------------|-----------------|
| 10 | 10-10-000 |
| 11 | 11-11-000 |
| 12 | 12-12-000 |
| 13 | 13-13-000 |

 **MuniFinancial**
 47000 Via Arroyo
 Suite 100
 Madera, California 93601-0000
 Phone (562) 567-5600 Fax (562) 567-5600

EXHIBIT C

CITY OF MADERA COMMUNITY FACILITIES DISTRICT NO. 2005-1 (PUBLIC SERVICES)

Delinquency Summary

DELINQUENCY SUMMARY BY DISTRICT

City of Madera

Community Facilities District No. 2005-1 (Public Services)

| DUE DATE | DOLLARS LEVIED | DOLLARS DELINQUENT | % DOLLARS DELINQUENT | PARCELS LEVIED | PARCELS DELINQUENT | DATA DATE |
|--------------|-----------------------|--------------------|----------------------|----------------|--------------------|------------|
| 2013/14-1 | \$134,759.55 | \$102.39 | 0.08% | 906 | 1 | 05/16/2017 |
| 2013/14-2 | 134,759.55 | 102.39 | 0.08% | 906 | 1 | 05/16/2017 |
| 2014/15-1 | 131,762.91 | 1,185.60 | 0.90% | 906 | 6 | 05/16/2017 |
| 2014/15-2 | 131,762.91 | 1,185.60 | 0.90% | 906 | 6 | 05/16/2017 |
| 2015/16-1 | 158,771.40 | 814.08 | 0.51% | 920 | 4 | 05/16/2017 |
| 2015/16-2 | 158,771.40 | 2,972.94 | 1.87% | 920 | 23 | 05/16/2017 |
| 2016/17-1 | 165,621.06 | 0.00 | 0.00% | 936 | 0 | 05/16/2017 |
| 2016/17-2 | 165,621.06 | 1,257.78 | 0.76% | 936 | 6 | 05/16/2017 |
| TOTAL | \$1,181,829.84 | \$7,620.78 | 0.64% | | | |

Calculations performed on 10/17/2017 12:25:00AM