

City of Madera

Community Facilities District No. 2005-1 (Public Services)

Fiscal Year 2016/17
Annual District Administration Report

27368 Via Industria
Suite 200

Temecula, CA 92590

T 951.587.3500 | 800.755.6864
F 951.587.3510 | 888.326.6864

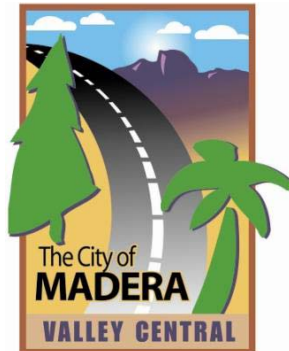
Property Tax Information Line
T. 866.807.6864

www.willdan.com/Financial



ANNUAL DISTRICT ADMINISTRATION REPORT FISCAL YEAR 2016/17

CITY OF MADERA COMMUNITY FACILITIES DISTRICT No. 2005-1 (PUBLIC SERVICES)



Prepared for

CITY OF MADERA
205 West 4th Street
Madera, CA 93637

T. (559) 661-5400

Prepared by

WILLDAN FINANCIAL SERVICES
27368 Via Industria, Suite 200
Temecula, CA 92590
T. (951) 587-3537 (800) 755-6864
F. (951) 587-3510 (888) 326-6864

Property Tax Information Line
T. 866.807.6864

TABLE OF CONTENTS

This report provides a summary of the financial and administrative information for Community Facilities District No. 2005-1 (Public Services) (“District”) of the City of Madera (“City”) and is organized in the following sections:

INTRODUCTION

- A. FORMATION
- B. BOUNDARIES AND DEVELOPMENT SUMMARY
- C. BONDS
- D. FINANCED SERVICES

I. LEVY SUMMARY OVERVIEW

- A. FISCAL YEAR 2016/17 LEVY AMOUNTS
- B. FISCAL YEAR 2016/17 HANDBILL AMOUNTS

II. FINANCIAL OBLIGATIONS

- A. FISCAL YEAR 2016/17 LEVY COMPONENTS
- B. PREPAYMENT SUMMARY

III. DELINQUENCY AND FORECLOSURE STATUS

- A. DELINQUENCY SUMMARY
- B. FORECLOSURE COVENANT
- C. DELINQUENCY MONITORING ACTIONS

IV. SPECIAL TAX LEVY AND METHOD OF APPORTIONMENT

- A. METHOD OF APPORTIONMENT
- B. SPECIAL TAX SPREAD
- C. MAXIMUM AND APPLIED SPECIAL TAX RATES
- D. APPLIED SPECIAL TAX PROGRESSION

EXHIBITS

- EXHIBIT A: FISCAL YEAR 2016/17 CHARGE DETAIL REPORT
- EXHIBIT B: BOUNDARY DIAGRAM
- EXHIBIT C: DELINQUENCY SUMMARY

INTRODUCTION

The information provided in this report is derived primarily from documents developed at the time the District was formed and from data provided by the City or accessed through the City. The information sources include the Rate and Method of apportionment, annual budget, debt service schedule(s), fund balance(s) and special tax/assessment delinquency data. The development status, prepayments and historical information were accessed through the City and/or the developer and are maintained by Willdan Financial Services.

The Mello-Roos Community Facilities Act (“Act”) of 1982 came about as a response to the lack of adequate financing for public capital facilities and services in the post-Proposition 13 era. State Legislators Mello and Roos sponsored this Bill, which was enacted into law by the California Legislature and is now Sections 53311 through 53363 of the California Government Code. The Act authorizes a local governmental agency, such as a school district or city, to form a Community Facilities District (“CFD”) or (“District”) within a defined set of boundaries for the purposes of providing public facilities and services. A CFD is formed for financing purposes only, and is governed by the agency that formed it.

A. FORMATION

On November 16, 2005, the City formed the District by the adoption of Resolution No. 05-334. The qualified electors within the District approved the levy of the special tax in accordance with the rate and method of special tax.

B. BOUNDARIES AND DEVELOPMENT SUMMARY

The District boundaries at formation were composed of sixteen parcels, spread throughout four noncontiguous areas. Nine of those parcels are located in a triangular shaped area bordered on the east by Road 28, on the north by Avenue 14, and on the southwest by the Southern Pacific Co. railroad tracks. One parcel is located west of Highway 145, bounded on the north by Avenue 13 and on the west by Road 26 1/2. Two of the parcels are located west of Granada Drive, being bound on the north by Cleveland Avenue. The remaining four parcels are located east of North Lake St., bounded on the north by B. Ellis St., and on the east by Merced St. Since District formation, the original parcels have subdivided. The boundaries of the District include all properties and parcels on which special taxes may be levied to pay for the costs and expenses of the services.

There are currently nine hundred fifty-four (954) developed parcels located within the boundaries of the District which are subject to Special Tax

C. BONDS

Currently no Bonds have been issued for this district.

D. FINANCED SERVICES

It is the intention of City Council to finance certain services that are in addition to those provided in or required for the territory within the District and will not be replacing services already available. The following is a general description of services provided by the District:

Police protection services and fire protection and suppression services, including but not limited to (i) the costs of contracting services, (ii) equipment, vehicles, ambulances and paramedics, fire apparatus, supplies, (iii) the salaries and benefits of City staff that directly provide police protection services and fire protection and suppression services and other services as defined herein, respectively, and (iv) City overhead costs associated with providing such services within the District. On each July 1 following the Base Year the increases attributed to salaries and benefits shall be calculated and limited to the increase based on the Annual Escalation Factor as provided in the Rate and Method of Apportionment of the Special Taxes. The Special Tax will finance Services that are in addition to those provided in or required for the territory within the District and will not be replacing services already available. The Special Tax provides only partial funding for police and fire services.

Park maintenance of the City of Madera, including but not limited to, labor, material, administration, personnel, equipment, and utilities necessary to maintain park improvements within the District, including recreational facilities, trees, plant material, sod, irrigation systems, sidewalks, drainage facilities, weed control and other abatements, public restrooms, signs, monuments, and associated appurtenant facilities located within the District. Storm drainage system maintenance and operations of the City of Madera, including but not limited to, labor, material, administration, personnel, equipment, and utilities necessary to maintain and operate the storm drainage system within the District.

I. LEVY SUMMARY OVERVIEW

A. FISCAL YEAR 2016/17 LEVY AMOUNTS

The following table summarizes the amounts levied (including handbilled/direct billed charges) for Fiscal Year 2016/17 for the District.

Parcel Count	Charge Amount
936	\$331,242.12

B. FISCAL YEAR 2016/17 HANDBILL AMOUNTS

The following table summarizes the amounts billed directly to the property owner rather than placed on the Secured Property Tax Roll, due to the tax exempt status in Fiscal Year 2016/17 for the District.

Parcel Count	Charge Amount
0	\$0.00

II. FINANCIAL OBLIGATIONS

A. FISCAL YEAR 2016/17 LEVY COMPONENTS

The following table summarizes the financial obligations of the District.

Uses of Funds	Amount
Services	\$324,706.91
Administrative Costs	6,535.21
Adjustments Applied to the Levy – Addition/(Credit)	0.00
Total Charge Amount Levied ⁽¹⁾	\$331,242.12

⁽¹⁾ Slight variance to actual "Charge Amount" in Section (I)(A) above due to rounding.

III. DELINQUENCY AND FORECLOSURE STATUS

A. DELINQUENCY SUMMARY

The following table summarizes delinquency summary for the most recent fiscal year and the cumulative for all years with delinquencies as of May 16, 2016.

Summary for Most Recent Fiscal Year		Cumulative Summary for All Years with Delinquencies	
\$9,691.68	3.05%	\$19,367.29	2.28%

FOR A MORE COMPREHENSIVE SUMMARY, PLEASE SEE EXHIBIT C OF THIS REPORT.

B. FORECLOSURE COVENANT

The District is not bonded, therefore; there is no foreclosure covenant for the District.

C. DELINQUENCY MANAGEMENT ACTIONS

Willdan Financial Services has not performed any Delinquency Monitoring Actions during Fiscal Year 2015/16.

Action(s)	Date Performed	Number of Parcels
N/A	N/A	0

IV. SPECIAL TAX LEVY AND METHOD OF APPORTIONMENT

The methodology employed to calculate and apportion the special tax is in accordance with the document entitled Rate and Method of Apportionment (“RMA”). The RMA is hereby referenced and summarized but not included in this report, however the official document can be requested and provided by the City’s special tax administrator Willdan Financial Services.

A. RATE AND METHOD OF APPORTIONMENT

Commencing with Fiscal Year 2006-07, and for each subsequent Fiscal Year, the District Administrator shall calculate the Special Tax Requirement based on the definitions in Section A of the Rate and Method of Apportionment and levy the Special Tax as follows until the amount of the Special Tax levied equals the Special Tax Requirement.

First, the Special Tax shall be levied each Fiscal Year on each Assessor’s Parcel of Developed Property Proportionately between Developed Single- Family Residence and Developed Multi- Family Residence up to 100% of the applicable Maximum Special Tax.

Second, if the Special Tax Requirement has not been satisfied by the first step, then the Special Tax shall be levied each Fiscal Year on each Assessor’s Parcel of Entitled Property up to 100% of the applicable Maximum Special Tax for Entitled Property.

B. SPECIAL TAX SPREAD

The following table summarizes the number of parcels in each land use classification as well as the Applied Special Tax Rate for each classification.

Land Use Classification	Taxable Units	No. of Parcels	2016/17 Applied Special Tax Rate per Unit	2016/17 Dollars Levied
1 – Single Fam	605	605	\$419.26	\$261,198.98
2 – Entitled	331	331	223.78	70,043.14
Total		936		\$331,242.12

C. MAXIMUM ASSIGNED AND APPLIED SPECIAL TAX RATES

The following table summarizes the percent of the Applied Special Tax to the Maximum Assigned Special Tax rate.

Land Use Classification	2016/17 Maximum Assigned Special Tax Rate ⁽¹⁾	2016/17 Applied Special Tax Rate	Percent of Maximum
1 – Single Fam	\$419.26	\$419.26	100.00%
2 – Entitled	\$223.78	\$223.78	100.00%

(1) Based on the Rate and Method of Apportionment, the maximum assigned special tax rates have been escalated by three percent (3.00%) over the prior fiscal year.

D. APPLIED SPECIAL TAX PROGRESSION

The following table summarizes the percent change of Fiscal Year 2016/17 Applied Special Tax Rate as compared to Fiscal Year 2015/16 Applied Special Tax Rate.

Land Use Classification	2016/17 Applied Special Tax Rate	2015/16 Applied Special Tax Rate	Percent Change from 2015/16
1 – Single Fam	\$419.26	\$407.05	3.00%
2 – Entitled	\$223.78	\$217.26	3.00%

EXHIBIT A

CITY OF MADERA COMMUNITY FACILITIES DISTRICT NO. 2005-1 (PUBLIC SERVICES)

Fiscal Year 2016/17 Charge Detail Report

City of Madera
Community Facilities District No. 2005-1 (Public Services)
Charge Detail Report (Sorted by Assessor's Parcel Number)

Assessor's Parcel Number	Situs Adresse	Assessed Land Values	Assessed Structure Values	Total Assessed Values	FY 16/17 Max Rate	FY 16/17 Charge
005-014-003-000	785 FRESNO ST	\$ 20,492.00	\$ 72,441.00	\$ 92,933.00	\$ 419.26	\$ 419.26
005-014-004-000	771 FRESNO ST	30,738.00	61,477.00	92,215.00	419.26	419.26
005-014-005-000	759 FRESNO ST	62,418.00	124,899.00	187,317.00	419.26	419.26
005-014-006-000	1011 RIVERSIDE DR	21,059.00	82,132.00	103,191.00	419.26	419.26
005-014-007-000	1015 RIVERSIDE DR	20,902.00	63,752.00	84,654.00	419.26	419.26
005-320-001-000	1994 EAGLE DR	20,090.00	117,531.00	137,621.00	419.26	419.26
005-320-002-000	1986 EAGLE DR	20,090.00	121,549.00	141,639.00	419.26	419.26
005-320-003-000	1974 EAGLE DR	20,090.00	109,494.00	129,584.00	419.26	419.26
005-320-004-000	1966 EAGLE DR	20,000.00	110,000.00	130,000.00	419.26	419.26
005-320-005-000	1958 EAGLE DR	13,795.00	0.00	13,795.00	419.26	419.26
005-320-006-000	1950 EAGLE DR	13,795.00	0.00	13,795.00	419.26	419.26
005-320-007-000	1930 EAGLE DR	13,795.00	0.00	13,795.00	419.26	419.26
005-320-008-000	1922 EAGLE DR	13,795.00	0.00	13,795.00	419.26	419.26
005-320-009-000	1914 EAGLE DR	13,795.00	0.00	13,795.00	419.26	419.26
005-320-010-000	1906 EAGLE DR	13,795.00	0.00	13,795.00	419.26	419.26
005-320-011-000	1902 EAGLE DR	13,795.00	0.00	13,795.00	419.26	419.26
005-320-012-000	1901 EAGLE DR	13,795.00	0.00	13,795.00	419.26	419.26
005-320-013-000	1907 EAGLE DR	13,795.00	0.00	13,795.00	419.26	419.26
005-320-014-000	1915 EAGLE DR	13,795.00	0.00	13,795.00	419.26	419.26
005-320-015-000	1923 EAGLE DR	13,795.00	0.00	13,795.00	419.26	419.26
005-320-016-000	1931 EAGLE DR	13,795.00	0.00	13,795.00	419.26	419.26
005-320-017-000	1951 EAGLE DR	13,795.00	0.00	13,795.00	419.26	419.26
005-320-018-000	1959 EAGLE DR	13,795.00	0.00	13,795.00	419.26	419.26
005-320-019-000	1967 EAGLE DR	13,795.00	0.00	13,795.00	419.26	419.26
005-320-020-000	1975 EAGLE DR	13,795.00	0.00	13,795.00	419.26	419.26
005-320-021-000	1987 EAGLE DR	13,795.00	0.00	13,795.00	419.26	419.26
005-320-022-000	1995 EAGLE DR	13,795.00	0.00	13,795.00	419.26	419.26
005-320-023-000	1105 ROBIN WAY	8,360.00	0.00	8,360.00	223.79	223.78
005-320-024-000	1117 ROBIN WAY	8,360.00	0.00	8,360.00	223.79	223.78
005-320-025-000	1129 ROBIN WAY	8,360.00	0.00	8,360.00	223.79	223.78
005-320-026-000	1141 ROBIN WAY	8,360.00	0.00	8,360.00	223.79	223.78
005-320-027-000	1153 ROBIN WAY	8,360.00	0.00	8,360.00	223.79	223.78
005-320-028-000	1980 BLUE SKY LN	8,360.00	0.00	8,360.00	223.79	223.78
005-320-029-000	1972 BLUE SKY LN	8,360.00	0.00	8,360.00	223.79	223.78
005-320-030-000	1964 BLUE SKY LN	8,360.00	0.00	8,360.00	223.79	223.78
005-320-031-000	1956 BLUE SKY LN	8,360.00	0.00	8,360.00	223.79	223.78
005-320-032-000	1948 BLUE SKY LN	8,360.00	0.00	8,360.00	223.79	223.78
005-320-033-000	1943 BLUE SKY LN	8,360.00	0.00	8,360.00	223.79	223.78
005-320-034-000	1951 BLUE SKY LN	8,360.00	0.00	8,360.00	223.79	223.78
005-320-035-000	1959 BLUE SKY LN	8,360.00	0.00	8,360.00	223.79	223.78
005-320-036-000	1967 BLUE SKY LN	8,360.00	0.00	8,360.00	223.79	223.78
005-320-037-000	1165 SPARROW WAY	8,360.00	0.00	8,360.00	223.79	223.78
005-320-038-000	1177 SPARROW WAY	8,360.00	0.00	8,360.00	223.79	223.78
005-320-039-000	1189 SPARROW WAY	8,360.00	0.00	8,360.00	223.79	223.78
005-320-040-000	1197 SPARROW WAY	8,360.00	0.00	8,360.00	223.79	223.78
005-320-041-000	1944 MEADOW LARK WAY	8,360.00	0.00	8,360.00	223.79	223.78
005-320-042-000	1952 MEADOW LARK WAY	8,360.00	0.00	8,360.00	223.79	223.78
005-320-043-000	1960 MEADOW LARK WAY	8,360.00	0.00	8,360.00	223.79	223.78
005-320-044-000	1949 MEADOW LARK WAY	8,360.00	0.00	8,360.00	223.79	223.78
005-320-045-000	1941 MEADOW LARK WAY	8,360.00	0.00	8,360.00	223.79	223.78
005-320-046-000	1925 MEADOW LARK WAY	8,360.00	77,000.00	85,360.00	419.26	419.26
005-320-047-000	1917 MEADOW LARK WAY	8,360.00	77,000.00	85,360.00	419.26	419.26
005-320-048-000	1909 MEADOW LARK WAY	8,360.00	77,000.00	85,360.00	419.26	419.26
005-320-049-000	1901 MEADOW LARK WAY	8,360.00	77,000.00	85,360.00	419.26	419.26
005-320-050-000	1904 MEADOW LARK WAY	8,360.00	0.00	8,360.00	223.79	223.78
005-320-051-000	1912 MEADOW LARK WAY	8,360.00	0.00	8,360.00	223.79	223.78
005-320-052-000	1920 MEADOW LARK WAY	8,360.00	0.00	8,360.00	223.79	223.78
005-320-053-000	1927 BLUE SKY LN	8,360.00	0.00	8,360.00	223.79	223.78
005-320-054-000	1919 BLUE SKY LN	8,360.00	0.00	8,360.00	223.79	223.78
005-320-055-000	1911 BLUE SKY LN	8,360.00	0.00	8,360.00	223.79	223.78
005-320-056-000	1903 BLUE SKY LN	8,360.00	0.00	8,360.00	223.79	223.78
005-320-057-000	1908 BLUE SKY LN	8,360.00	0.00	8,360.00	223.79	223.78
005-320-058-000	1916 BLUE SKY LN	8,360.00	0.00	8,360.00	223.79	223.78
005-320-059-000	1924 BLUE SKY LN	8,360.00	0.00	8,360.00	223.79	223.78
005-320-060-000	1932 BLUE SKY LN	8,360.00	0.00	8,360.00	223.79	223.78
009-580-001-000	2699 PEAR TREE DR	52,203.00	91,356.00	143,559.00	419.26	419.26
009-580-002-000	2713 PEAR TREE DR	35,158.00	108,490.00	143,648.00	419.26	419.26
009-580-003-000	2727 PEAR TREE DR	64,442.00	105,272.00	169,714.00	419.26	419.26
009-580-004-000	1108 S BERRY DR	35,158.00	105,978.00	141,136.00	419.26	419.26
009-580-005-000	1116 S BERRY DR	50,118.00	78,288.00	128,406.00	419.26	419.26
009-580-006-000	1120 S BERRY DR	59,786.00	82,167.00	141,953.00	419.26	419.26
009-580-007-000	1124 S BERRY DR	45,000.00	121,950.00	166,950.00	419.26	419.26
009-580-008-000	1128 S BERRY DR	40,181.00	136,567.00	176,748.00	419.26	419.26
009-580-009-000	1132 S BERRY DR	57,481.00	101,282.00	158,763.00	419.26	419.26

City of Madera
Community Facilities District No. 2005-1 (Public Services)
Charge Detail Report (Sorted by Assessor's Parcel Number)

Assessor's Parcel Number	Situs Adresse	Assessed Land Values	Assessed Structure Values	Total Assessed Values	FY 16/17 Max Rate	FY 16/17 Charge
009-580-010-000	1136 S BERRY DR	40,985.00	117,832.00	158,817.00	419.26	419.26
009-580-011-000	1140 S BERRY DR	40,181.00	120,494.00	160,675.00	419.26	419.26
009-580-012-000	1144 S BERRY DR	40,181.00	105,476.00	145,657.00	419.26	419.26
009-580-013-000	1150 S BERRY DR	40,181.00	118,535.00	158,716.00	419.26	419.26
009-580-021-000	2644 PEANUT DR	47,374.00	118,702.00	166,076.00	419.26	419.26
009-580-022-000	2658 PEANUT DR	64,655.00	68,696.00	133,351.00	419.26	419.26
009-580-023-000	2672 PEANUT DR	61,778.00	111,934.00	173,712.00	419.26	419.26
009-580-024-000	2686 PEANUT DR	55,130.00	82,626.00	137,756.00	419.26	419.26
009-580-025-000	2690 PEANUT DR	57,756.00	76,210.00	133,966.00	419.26	419.26
009-580-026-000	2704 PEANUT DR	35,158.00	105,476.00	140,634.00	419.26	419.26
009-580-027-000	2703 PEANUT DR	59,643.00	88,680.00	148,323.00	419.26	419.26
009-580-028-000	2689 PEANUT DR	30,136.00	105,476.00	135,612.00	419.26	419.26
009-580-029-000	2685 PEANUT DR	54,221.00	67,740.00	121,961.00	419.26	419.26
009-580-030-000	2671 PEANUT DR	57,481.00	64,692.00	122,173.00	419.26	419.26
009-580-031-000	2657 PEANUT DR	55,930.00	67,088.00	123,018.00	419.26	419.26
009-580-032-000	2643 PEANUT DR	63,178.00	80,657.00	143,835.00	419.26	419.26
009-580-033-000	2648 PEAR TREE DR	63,178.00	110,562.00	173,740.00	419.26	419.26
009-580-034-000	2662 PEAR TREE DR	50,337.00	110,741.00	161,078.00	419.26	419.26
009-580-035-000	2676 PEAR TREE DR	63,178.00	105,298.00	168,476.00	419.26	419.26
009-580-036-000	2688 PEAR TREE DR	63,178.00	115,774.00	178,952.00	419.26	419.26
009-580-037-000	2698 PEAR TREE DR	63,178.00	115,774.00	178,952.00	419.26	419.26
009-580-038-000	2712 PEAR TREE DR	59,969.00	80,142.00	140,111.00	419.26	419.26
009-580-039-000	2663 PEAR TREE DR	53,257.00	81,217.00	134,474.00	419.26	419.26
009-580-040-000	2649 PEAR TREE DR	63,178.00	126,305.00	189,483.00	419.26	419.26
009-580-041-000	2635 PEAR TREE DR	59,969.00	81,840.00	141,809.00	419.26	419.26
009-580-042-000	2621 PEAR TREE DR	63,178.00	128,937.00	192,115.00	419.26	419.26
009-580-043-000	1109 TOSCHI DR	52,647.00	83,710.00	136,357.00	419.26	419.26
009-580-044-000	1115 TOSCHI DR	67,558.00	70,894.00	138,452.00	419.26	419.26
009-580-045-000	1119 TOSCHI DR	59,969.00	78,394.00	138,363.00	419.26	419.26
009-580-046-000	1123 TOSCHI DR	57,913.00	100,033.00	157,946.00	419.26	419.26
009-580-047-000	1127 TOSCHI DR	40,985.00	128,078.00	169,063.00	419.26	419.26
009-580-048-000	1131 TOSCHI DR	47,030.00	114,963.00	161,993.00	419.26	419.26
009-580-049-000	1135 TOSCHI DR	41,804.00	73,158.00	114,962.00	419.26	419.26
009-580-050-000	1139 TOSCHI DR	56,636.00	77,838.00	134,474.00	419.26	419.26
009-580-051-000	1143 TOSCHI DR	40,985.00	76,847.00	117,832.00	419.26	419.26
009-580-052-000	1153 TOSCHI DR	54,221.00	82,963.00	137,184.00	419.26	419.26
009-580-055-000		59,615.00	106,848.00	166,463.00	419.26	419.26
009-580-056-000		40,985.00	122,904.00	163,889.00	419.26	419.26
009-580-057-000	2681 APPLE TREE DR	68,265.00	90,015.00	158,280.00	419.26	419.26
009-580-058-000		41,024.00	128,078.00	169,102.00	419.26	419.26
009-580-059-000		69,397.00	91,024.00	160,421.00	419.26	419.26
009-580-060-000		55,361.00	84,616.00	139,977.00	419.26	419.26
009-581-002-000	1162 S BERRY DR	33,000.00	0.00	33,000.00	419.26	419.26
009-581-003-000	1168 S BERRY DR	45,000.00	141,250.00	186,250.00	419.26	419.26
009-581-004-000	1174 S BERRY DR	33,000.00	0.00	33,000.00	419.26	419.26
009-581-005-000	1180 S BERRY DR	40,000.00	135,225.00	175,225.00	419.26	419.26
009-581-006-000	1186 S BERRY DR	33,000.00	0.00	33,000.00	419.26	419.26
009-581-007-000	1192 S BERRY DR	33,000.00	0.00	33,000.00	419.26	419.26
009-581-008-000	1198 S BERRY DR	33,000.00	0.00	33,000.00	419.26	419.26
009-581-009-000	1204 S BERRY DR	33,000.00	0.00	33,000.00	419.26	419.26
009-581-010-000	1210 S BERRY DR	33,000.00	0.00	33,000.00	419.26	419.26
009-581-011-000	2711 CHERRY TREE DR	38,000.00	0.00	38,000.00	419.26	419.26
009-581-012-000	2697 CHERRY TREE DR	38,000.00	0.00	38,000.00	419.26	419.26
009-581-013-000	2683 CHERRY TREE DR	38,000.00	0.00	38,000.00	419.26	419.26
009-581-014-000	2669 CHERRY TREE DR	38,000.00	0.00	38,000.00	419.26	419.26
009-581-015-000	2655 CHERRY TREE DR	38,000.00	0.00	38,000.00	419.26	419.26
009-581-016-000	2641 CHERRY TREE DR	38,000.00	0.00	38,000.00	419.26	419.26
009-581-017-000	2646 ORANGE TREE DR	38,000.00	0.00	38,000.00	419.26	419.26
009-581-018-000	2660 ORANGE TREE DR	38,000.00	0.00	38,000.00	419.26	419.26
009-581-019-000	2674 ORANGE TREE DR	38,000.00	0.00	38,000.00	419.26	419.26
009-581-020-000	2688 ORANGE TREE DR	38,000.00	0.00	38,000.00	419.26	419.26
009-581-021-000	2696 ORANGE TREE DR	38,000.00	0.00	38,000.00	419.26	419.26
009-581-022-000	2710 ORANGE TREE DR	38,000.00	0.00	38,000.00	419.26	419.26
009-581-023-000	2709 ORANGE TREE DR	55,000.00	104,950.00	159,950.00	419.26	419.26
009-581-024-000	2695 ORANGE TREE DR	33,000.00	0.00	33,000.00	419.26	419.26
009-581-025-000	2687 ORANGE TREE DR	33,000.00	0.00	33,000.00	419.26	419.26
009-581-026-000	2673 ORANGE TREE DR	33,000.00	0.00	33,000.00	419.26	419.26
009-581-027-000	2659 ORANGE TREE DR	33,000.00	0.00	33,000.00	419.26	419.26
009-581-028-000	2645 ORANGE TREE DR	40,000.00	150,000.00	190,000.00	419.26	419.26
009-581-029-000	2640 APPLE TREE DR	55,000.00	142,000.00	197,000.00	419.26	419.26
009-581-030-000	2654 APPLE TREE DR	48,996.00	104,606.00	153,602.00	419.26	419.26
009-581-031-000	2668 APPLE TREE DR	40,000.00	119,950.00	159,950.00	419.26	419.26
009-581-032-000	2682 APPLE TREE DR	52,647.00	84,238.00	136,885.00	419.26	419.26
009-581-033-000	2694 APPLE TREE DR	33,000.00	0.00	33,000.00	419.26	419.26

City of Madera
Community Facilities District No. 2005-1 (Public Services)
Charge Detail Report (Sorted by Assessor's Parcel Number)

Assessor's Parcel Number	Situs Adresse	Assessed Land Values	Assessed Structure Values	Total Assessed Values	FY 16/17 Max Rate	FY 16/17 Charge
009-581-034-000	2708 APPLE TREE DR	21,871.00	0.00	21,871.00	419.26	419.26
009-581-041-000	1167 TOSCHI DR	50,000.00	140,000.00	190,000.00	419.26	419.26
009-581-042-000	1173 TOSCHI DR	33,000.00	0.00	33,000.00	419.26	419.26
009-581-043-000	1179 TOSCHI DR	16,029.00	0.00	16,029.00	419.26	419.26
009-581-044-000	1185 TOSCHI DR	50,000.00	115,000.00	165,000.00	419.26	419.26
009-581-045-000	1191 TOSCHI DR	40,000.00	119,950.00	159,950.00	419.26	419.26
009-581-046-000	1197 TOSCHI DR	33,000.00	0.00	33,000.00	419.26	419.26
009-581-047-000	1203 TOSCHI DR	33,000.00	0.00	33,000.00	419.26	419.26
009-581-048-000	1209 TOSCHI DR	45,000.00	142,950.00	187,950.00	419.26	419.26
009-581-049-000	2600 CHERRY TREE DR	16,029.00	0.00	16,029.00	419.26	419.26
009-581-050-000	2614 CHERRY TREE DR	16,029.00	0.00	16,029.00	419.26	419.26
009-581-051-000	2628 CHERRY TREE DR	16,029.00	0.00	16,029.00	419.26	419.26
009-581-052-000	2642 CHERRY TREE DR	16,029.00	0.00	16,029.00	419.26	419.26
009-581-053-000	2656 CHERRY TREE DR	16,029.00	0.00	16,029.00	419.26	419.26
009-581-054-000	2670 CHERRY TREE DR	16,029.00	0.00	16,029.00	419.26	419.26
009-581-055-000	2684 CHERRY TREE DR	16,036.00	0.00	16,036.00	419.26	419.26
009-581-056-000	2698 CHERRY TREE DR	16,036.00	0.00	16,036.00	419.26	419.26
009-581-057-000	2712 CHERRY TREE DR	16,036.00	0.00	16,036.00	419.26	419.26
009-581-058-000		4,369.00	0.00	4,369.00	419.26	419.26
009-581-060-000		40,000.00	119,950.00	159,950.00	419.26	419.26
011-331-001-000	307 SAN GABRIEL DR	11,495.00	0.00	11,495.00	419.26	419.26
011-331-002-000	297 SAN GABRIEL DR	11,495.00	0.00	11,495.00	419.26	419.26
011-331-003-000	277 SAN GABRIEL DR	35,862.00	138,325.00	174,187.00	419.26	419.26
011-331-004-000	1487 LINDA MESA DR	11,495.00	0.00	11,495.00	419.26	419.26
011-331-005-000	1477 LINDA MESA DR	11,495.00	0.00	11,495.00	419.26	419.26
011-331-006-000	1467 LINDA MESA DR	11,495.00	0.00	11,495.00	419.26	419.26
011-331-007-000	1457 LINDA MESA DR	11,495.00	0.00	11,495.00	223.79	223.78
011-331-008-000	1447 LINDA MESA DR	11,495.00	0.00	11,495.00	223.79	223.78
011-331-009-000	1437 LINDA MESA DR	11,495.00	0.00	11,495.00	223.79	223.78
011-331-010-000	1427 LINDA MESA DR	11,495.00	0.00	11,495.00	223.79	223.78
011-331-011-000	1417 LINDA MESA DR	11,495.00	0.00	11,495.00	223.79	223.78
011-331-012-000	1407 LINDA MESA DR	11,495.00	0.00	11,495.00	223.79	223.78
011-331-013-000	1397 LINDA MESA DR	11,495.00	0.00	11,495.00	223.79	223.78
011-331-014-000	1387 LINDA MESA DR	11,495.00	0.00	11,495.00	223.79	223.78
011-331-015-000	1377 LINDA MESA DR	11,495.00	0.00	11,495.00	223.79	223.78
011-331-016-000	1367 LINDA MESA DR	11,495.00	0.00	11,495.00	223.79	223.78
011-331-017-000	1357 LINDA MESA DR	11,495.00	0.00	11,495.00	223.79	223.78
011-331-018-000	1347 LINDA MESA DR	11,495.00	0.00	11,495.00	223.79	223.78
011-331-019-000	272 RANCHO MIRAGE RD	11,495.00	0.00	11,495.00	223.79	223.78
011-331-020-000	292 RANCHO MIRAGE RD	11,495.00	0.00	11,495.00	223.79	223.78
011-331-021-000	302 RANCHO MIRAGE RD	11,495.00	0.00	11,495.00	223.79	223.78
011-331-022-000	1486 LINDA MESA DR	11,495.00	0.00	11,495.00	419.26	419.26
011-331-023-000	1476 LINDA MESA DR	11,495.00	0.00	11,495.00	419.26	419.26
011-331-024-000	1466 LINDA MESA DR	11,495.00	0.00	11,495.00	419.26	419.26
011-331-025-000	1456 LINDA MESA DR	11,495.00	0.00	11,495.00	419.26	419.26
011-331-026-000	1446 LINDA MESA DR	11,495.00	0.00	11,495.00	419.26	419.26
011-331-027-000	1436 LINDA MESA DR	11,495.00	0.00	11,495.00	223.79	223.78
011-331-028-000	1426 LINDA MESA DR	11,495.00	0.00	11,495.00	223.79	223.78
011-331-029-000	1416 LINDA MESA DR	11,495.00	0.00	11,495.00	223.79	223.78
011-331-030-000	1406 LINDA MESA DR	11,495.00	0.00	11,495.00	223.79	223.78
011-331-031-000	1396 LINDA MESA DR	11,495.00	0.00	11,495.00	223.79	223.78
011-331-032-000	1386 LINDA MESA DR	11,495.00	0.00	11,495.00	223.79	223.78
011-331-033-000	1376 LINDA MESA DR	11,495.00	0.00	11,495.00	223.79	223.78
011-331-034-000	1366 LINDA MESA DR	11,495.00	0.00	11,495.00	223.79	223.78
011-331-035-000	1356 LINDA MESA DR	11,495.00	0.00	11,495.00	223.79	223.78
011-331-036-000	1346 LINDA MESA DR	11,495.00	0.00	11,495.00	223.79	223.78
011-331-037-000	1341 PASEO DEL MAR PR	11,495.00	0.00	11,495.00	419.26	419.26
011-331-038-000	1351 PASEO DEL MAR PR	11,495.00	0.00	11,495.00	419.26	419.26
011-331-039-000	1361 PASEO DEL MAR PR	11,495.00	0.00	11,495.00	419.26	419.26
011-331-040-000	1371 PASEO DEL MAR PR	11,495.00	0.00	11,495.00	419.26	419.26
011-331-041-000	1381 PASEO DEL MAR PR	11,495.00	0.00	11,495.00	419.26	419.26
011-331-042-000	1391 PASEO DEL MAR PR	11,495.00	0.00	11,495.00	419.26	419.26
011-331-043-000	1401 PASEO DEL MAR PR	11,495.00	0.00	11,495.00	419.26	419.26
011-331-044-000	1411 PASEO DEL MAR PR	11,495.00	0.00	11,495.00	419.26	419.26
011-331-045-000	1421 PASEO DEL MAR PR	11,495.00	0.00	11,495.00	419.26	419.26
011-331-046-000	1431 PASEO DEL MAR PR	11,495.00	0.00	11,495.00	419.26	419.26
011-331-047-000	1441 PASEO DEL MAR PR	11,495.00	0.00	11,495.00	419.26	419.26
011-331-048-000	1451 PASEO DEL MAR PR	11,495.00	0.00	11,495.00	419.26	419.26
011-331-049-000	1461 PASEO DEL MAR PR	11,495.00	0.00	11,495.00	419.26	419.26
011-331-050-000	1471 PASEO DEL MAR PR	11,495.00	0.00	11,495.00	419.26	419.26
011-331-051-000	1481 PASEO DEL MAR PR	11,495.00	0.00	11,495.00	419.26	419.26
011-332-001-000	342 RANCHO MIRAGE RD	11,495.00	0.00	11,495.00	419.26	419.26
011-332-002-000	362 RANCHO MIRAGE RD	11,495.00	0.00	11,495.00	419.26	419.26
011-332-003-000	382 RANCHO MIRAGE RD	11,495.00	0.00	11,495.00	419.26	419.26

City of Madera
Community Facilities District No. 2005-1 (Public Services)
Charge Detail Report (Sorted by Assessor's Parcel Number)

Assessor's Parcel Number	Situs Adresse	Assessed Land Values	Assessed Structure Values	Total Assessed Values	FY 16/17 Max Rate	FY 16/17 Charge
011-332-004-000	412 RANCHO MIRAGE RD	11,495.00	0.00	11,495.00	419.26	419.26
011-332-005-000	432 RANCHO MIRAGE RD	11,495.00	0.00	11,495.00	419.26	419.26
011-332-006-000	452 RANCHO MIRAGE RD	11,495.00	0.00	11,495.00	419.26	419.26
011-332-007-000	1324 LA QUINTA WAY	11,495.00	0.00	11,495.00	419.26	419.26
011-332-008-000	1334 LA QUINTA WAY	11,495.00	0.00	11,495.00	419.26	419.26
011-332-009-000	1344 LA QUINTA WAY	11,495.00	0.00	11,495.00	419.26	419.26
011-332-010-000	1354 LA QUINTA WAY	11,495.00	0.00	11,495.00	419.26	419.26
011-332-011-000	1364 LA QUINTA WAY	11,495.00	0.00	11,495.00	419.26	419.26
011-332-012-000	1394 LA QUINTA WAY	11,495.00	0.00	11,495.00	419.26	419.26
011-332-013-000	1404 LA QUINTA WAY	11,495.00	0.00	11,495.00	419.26	419.26
011-332-014-000	1414 LA QUINTA WAY	11,495.00	0.00	11,495.00	419.26	419.26
011-332-015-000	1424 LA QUINTA WAY	11,495.00	0.00	11,495.00	419.26	419.26
011-332-016-000	1434 LA QUINTA WAY	41,804.00	135,866.00	177,670.00	419.26	419.26
011-332-017-000	1444 LA QUINTA WAY	40,985.00	166,400.00	207,385.00	419.26	419.26
011-332-018-000	1454 LA QUINTA WAY	31,353.00	177,670.00	209,023.00	419.26	419.26
011-332-019-000	1464 LA QUINTA WAY	30,738.00	122,955.00	153,693.00	419.26	419.26
011-332-020-000	1474 LA QUINTA WAY	40,985.00	158,817.00	199,802.00	419.26	419.26
011-332-021-000	1484 LA QUINTA WAY	51,231.00	158,817.00	210,048.00	419.26	419.26
011-332-022-000	1494 LA QUINTA WAY	72,224.00	188,026.00	260,250.00	419.26	419.26
011-332-023-000	457 SAN GABRIEL DR	11,495.00	0.00	11,495.00	419.26	419.26
011-332-024-000	437 SAN GABRIEL DR	11,495.00	0.00	11,495.00	419.26	419.26
011-332-025-000	417 SAN GABRIEL DR	11,495.00	0.00	11,495.00	419.26	419.26
011-332-026-000	387 SAN GABRIEL DR	11,495.00	0.00	11,495.00	419.26	419.26
011-332-027-000	367 SAN GABRIEL DR	11,495.00	0.00	11,495.00	419.26	419.26
011-332-028-000	347 SAN GABRIEL DR	11,495.00	0.00	11,495.00	419.26	419.26
011-332-029-000	1488 PASEO DEL MAR PR	11,495.00	0.00	11,495.00	419.26	419.26
011-332-030-000	1478 PASEO DEL MAR PR	11,495.00	0.00	11,495.00	419.26	419.26
011-332-031-000	1468 PASEO DEL MAR PR	11,495.00	0.00	11,495.00	419.26	419.26
011-332-032-000	1458 PASEO DEL MAR PR	11,495.00	0.00	11,495.00	419.26	419.26
011-332-033-000	1448 PASEO DEL MAR PR	11,495.00	0.00	11,495.00	223.79	223.78
011-332-034-000	1438 PASEO DEL MAR PR	11,495.00	0.00	11,495.00	419.26	419.26
011-332-035-000	1428 PASEO DEL MAR PR	11,495.00	0.00	11,495.00	419.26	419.26
011-332-036-000	1418 PASEO DEL MAR PR	11,495.00	0.00	11,495.00	419.26	419.26
011-332-037-000	1408 PASEO DEL MAR PR	11,495.00	0.00	11,495.00	419.26	419.26
011-332-038-000	1398 PASEO DEL MAR PR	11,495.00	0.00	11,495.00	419.26	419.26
011-332-039-000	1388 PASEO DEL MAR PR	11,495.00	0.00	11,495.00	419.26	419.26
011-332-040-000	1378 PASEO DEL MAR PR	11,495.00	0.00	11,495.00	419.26	419.26
011-332-041-000	1368 PASEO DEL MAR PR	11,495.00	0.00	11,495.00	419.26	419.26
011-332-042-000	1358 PASEO DEL MAR PR	11,495.00	0.00	11,495.00	419.26	419.26
011-332-043-000	1348 PASEO DEL MAR PR	11,495.00	0.00	11,495.00	419.26	419.26
011-332-044-000	1343 LA QUINTA WAY	11,495.00	0.00	11,495.00	419.26	419.26
011-332-045-000	1353 LA QUINTA WAY	11,495.00	0.00	11,495.00	419.26	419.26
011-332-046-000	1363 LA QUINTA WAY	11,495.00	0.00	11,495.00	419.26	419.26
011-332-047-000	1373 LA QUINTA WAY	11,495.00	0.00	11,495.00	419.26	419.26
011-332-048-000	1383 LA QUINTA WAY	11,495.00	0.00	11,495.00	419.26	419.26
011-332-049-000	1393 LA QUINTA WAY	11,495.00	0.00	11,495.00	419.26	419.26
011-332-050-000	1403 LA QUINTA WAY	11,495.00	0.00	11,495.00	419.26	419.26
011-332-051-000	1413 LA QUINTA WAY	11,495.00	0.00	11,495.00	419.26	419.26
011-332-052-000	1423 LA QUINTA WAY	11,495.00	0.00	11,495.00	419.26	419.26
011-332-053-000	1433 LA QUINTA WAY	11,495.00	0.00	11,495.00	419.26	419.26
011-332-054-000	1443 LA QUINTA WAY	11,495.00	0.00	11,495.00	419.26	419.26
011-332-055-000	1453 LA QUINTA WAY	11,495.00	0.00	11,495.00	419.26	419.26
011-332-056-000	1463 LA QUINTA WAY	11,495.00	0.00	11,495.00	419.26	419.26
011-332-057-000	1473 LA QUINTA WAY	11,495.00	0.00	11,495.00	419.26	419.26
011-332-058-000	1483 LA QUINTA WAY	11,495.00	0.00	11,495.00	419.26	419.26
011-333-001-000	257 SAN GABRIEL DR	31,353.00	159,903.00	191,256.00	419.26	419.26
011-333-002-000	237 SAN GABRIEL DR	48,157.00	174,187.00	222,344.00	419.26	419.26
011-333-003-000	217 SAN GABRIEL DR	41,804.00	192,302.00	234,106.00	419.26	419.26
011-333-004-000	1495 VERDE MESA WAY	40,985.00	171,113.00	212,098.00	419.26	419.26
011-333-005-000	1485 VERDE MESA WAY	40,985.00	179,310.00	220,295.00	419.26	419.26
011-333-006-000	1475 VERDE MESA WAY	31,353.00	282,183.00	313,536.00	419.26	419.26
011-333-007-000	1465 VERDE MESA WAY	31,353.00	259,190.00	290,543.00	419.26	419.26
011-333-008-000	1455 VERDE MESA WAY	30,738.00	240,788.00	271,526.00	419.26	419.26
011-333-009-000	1445 VERDE MESA WAY	11,495.00	0.00	11,495.00	223.79	223.78
011-333-010-000	1435 VERDE MESA WAY	11,495.00	0.00	11,495.00	223.79	223.78
011-333-011-000	1425 VERDE MESA WAY	11,495.00	0.00	11,495.00	223.79	223.78
011-333-012-000	1424 LA COSTA CT	11,495.00	0.00	11,495.00	223.79	223.78
011-333-013-000	1434 LA COSTA CT	11,495.00	0.00	11,495.00	223.79	223.78
011-333-014-000	1444 LA COSTA CT	11,495.00	0.00	11,495.00	223.79	223.78
011-333-015-000	1449 LA COSTA CT	11,495.00	0.00	11,495.00	223.79	223.78
011-333-016-000	1439 LA COSTA CT	11,495.00	0.00	11,495.00	223.79	223.78
011-333-017-000	1429 LA COSTA CT	11,495.00	0.00	11,495.00	223.79	223.78
011-333-018-000	1420 LOMA LINDA CT	11,495.00	0.00	11,495.00	223.79	223.78
011-333-019-000	1430 LOMA LINDA CT	11,495.00	0.00	11,495.00	223.79	223.78

City of Madera
Community Facilities District No. 2005-1 (Public Services)
Charge Detail Report (Sorted by Assessor's Parcel Number)

Assessor's Parcel Number	Situs Adresse	Assessed Land Values	Assessed Structure Values	Total Assessed Values	FY 16/17 Max Rate	FY 16/17 Charge
011-333-020-000	1440 LOMA LINDA CT	11,495.00	0.00	11,495.00	223.79	223.78
011-333-021-000	1443 LOMA LINDA CT	11,495.00	0.00	11,495.00	223.79	223.78
011-333-022-000	1433 LOMA LINDA CT	11,495.00	0.00	11,495.00	223.79	223.78
011-333-023-000	1423 LOMA LINDA CT	11,495.00	0.00	11,495.00	223.79	223.78
011-333-024-000	1413 LOMA LINDA LN	31,353.00	227,836.00	259,189.00	419.26	419.26
011-333-025-000	1403 LOMA LINDA LN	31,353.00	209,024.00	240,377.00	419.26	419.26
011-333-026-000	1393 LOMA LINDA LN	56,455.00	147,397.00	203,852.00	419.26	419.26
011-333-027-000	1383 LOMA LINDA LN	34,325.00	204,926.00	239,251.00	419.26	419.26
011-333-028-000	1373 LOMA LINDA LN	40,985.00	245,911.00	286,896.00	419.26	419.26
011-333-029-000	1363 LOMA LINDA LN	31,353.00	203,799.00	235,152.00	419.26	419.26
011-333-030-000	1353 LOMA LINDA LN	30,600.00	198,898.00	229,498.00	419.26	419.26
011-333-031-000	1343 LOMA LINDA LN	11,495.00	0.00	11,495.00	223.79	223.78
011-333-032-000	1333 LOMA LINDA LN	11,495.00	0.00	11,495.00	223.79	223.78
011-333-033-000	1323 LOMA LINDA LN	11,495.00	0.00	11,495.00	223.79	223.78
011-333-034-000	32 RANCHO MIRAGE RD	11,495.00	0.00	11,495.00	223.79	223.78
011-333-035-000	52 RANCHO MIRAGE RD	11,495.00	0.00	11,495.00	223.79	223.78
011-333-036-000	72 RANCHO MIRAGE RD	11,495.00	0.00	11,495.00	223.79	223.78
011-333-037-000	92 RANCHO MIRAGE RD	11,495.00	0.00	11,495.00	419.26	419.26
011-333-038-000	102 RANCHO MIRAGE RD	11,495.00	0.00	11,495.00	419.26	419.26
011-333-039-000	122 RANCHO MIRAGE RD	11,495.00	0.00	11,495.00	419.26	419.26
011-333-040-000	142 RANCHO MIRAGE RD	11,495.00	0.00	11,495.00	223.79	223.78
011-333-041-000	182 RANCHO MIRAGE RD	11,495.00	0.00	11,495.00	223.79	223.78
011-333-042-000	212 RANCHO MIRAGE RD	11,495.00	0.00	11,495.00	223.79	223.78
011-333-043-000	232 RANCHO MIRAGE RD	11,495.00	0.00	11,495.00	223.79	223.78
011-333-044-000	252 RANCHO MIRAGE RD	11,495.00	0.00	11,495.00	223.79	223.78
011-333-045-000	204 CORONA DR	11,495.00	0.00	11,495.00	223.79	223.78
011-333-046-000	184 CORONA DR	11,495.00	0.00	11,495.00	223.79	223.78
011-333-047-000	164 CORONA DR	11,495.00	0.00	11,495.00	223.79	223.78
011-333-048-000	144 CORONA DR	11,495.00	0.00	11,495.00	223.79	223.78
011-333-049-000	124 CORONA DR	11,495.00	0.00	11,495.00	223.79	223.78
011-333-050-000	104 CORONA DR	11,495.00	0.00	11,495.00	223.79	223.78
011-333-051-000	94 CORONA DR	11,495.00	0.00	11,495.00	223.79	223.78
011-333-052-000	74 CORONA DR	11,495.00	0.00	11,495.00	223.79	223.78
011-333-053-000	54 CORONA DR	11,495.00	0.00	11,495.00	223.79	223.78
011-333-054-000	59 RANCHO SANTA FE DR	11,495.00	0.00	11,495.00	223.79	223.78
011-333-055-000	79 RANCHO SANTA FE DR	11,495.00	0.00	11,495.00	223.79	223.78
011-333-056-000	99 RANCHO SANTA FE DR	11,495.00	0.00	11,495.00	223.79	223.78
011-333-057-000	109 RANCHO SANTA FE DR	11,495.00	0.00	11,495.00	223.79	223.78
011-333-058-000	129 RANCHO SANTA FE DR	11,495.00	0.00	11,495.00	223.79	223.78
011-333-059-000	149 RANCHO SANTA FE DR	11,495.00	0.00	11,495.00	223.79	223.78
011-333-060-000	169 RANCHO SANTA FE DR	11,495.00	0.00	11,495.00	223.79	223.78
011-333-061-000	189 RANCHO SANTA FE DR	11,495.00	0.00	11,495.00	223.79	223.78
011-333-062-000	219 RANCHO SANTA FE DR	11,495.00	0.00	11,495.00	223.79	223.78
011-333-063-000	56 RANCHO SANTA FE DR	11,495.00	0.00	11,495.00	223.79	223.78
011-333-064-000	76 RANCHO SANTA FE DR	11,495.00	0.00	11,495.00	223.79	223.78
011-333-065-000	96 RANCHO SANTA FE DR	11,495.00	0.00	11,495.00	223.79	223.78
011-333-066-000	106 RANCHO SANTA FE DR	11,495.00	0.00	11,495.00	223.79	223.78
011-333-067-000	126 RANCHO SANTA FE DR	11,495.00	0.00	11,495.00	223.79	223.78
011-333-068-000	146 RANCHO SANTA FE DR	11,495.00	0.00	11,495.00	223.79	223.78
011-333-069-000	166 RANCHO SANTA FE DR	11,495.00	0.00	11,495.00	223.79	223.78
011-333-070-000	186 RANCHO SANTA FE DR	11,495.00	0.00	11,495.00	223.79	223.78
011-333-071-000	216 RANCHO SANTA FE DR	11,495.00	0.00	11,495.00	223.79	223.78
011-333-072-000	236 RANCHO SANTA FE DR	11,495.00	0.00	11,495.00	223.79	223.78
011-333-073-000	256 RANCHO SANTA FE DR	11,495.00	0.00	11,495.00	223.79	223.78
011-333-074-000	1372 VERDE MESA WAY	11,495.00	0.00	11,495.00	223.79	223.78
011-333-075-000	1382 VERDE MESA WAY	11,495.00	0.00	11,495.00	223.79	223.78
011-333-076-000	1392 VERDE MESA WAY	11,495.00	0.00	11,495.00	223.79	223.78
011-333-077-000	1402 VERDE MESA WAY	11,495.00	0.00	11,495.00	223.79	223.78
011-333-078-000	1412 VERDE MESA WAY	11,495.00	0.00	11,495.00	223.79	223.78
011-333-079-000	1422 VERDE MESA WAY	11,495.00	0.00	11,495.00	223.79	223.78
011-333-080-000	1432 VERDE MESA WAY	11,495.00	0.00	11,495.00	223.79	223.78
011-333-081-000	1442 VERDE MESA WAY	11,495.00	0.00	11,495.00	223.79	223.78
011-333-082-000	1452 VERDE MESA WAY	11,495.00	0.00	11,495.00	223.79	223.78
011-333-083-000	1462 VERDE MESA WAY	11,495.00	0.00	11,495.00	223.79	223.78
011-333-084-000	1472 VERDE MESA WAY	11,495.00	0.00	11,495.00	223.79	223.78
011-333-085-000	1482 VERDE MESA WAY	11,495.00	0.00	11,495.00	223.79	223.78
011-333-086-000	261 RANCHO MIRAGE RD	11,495.00	0.00	11,495.00	223.79	223.78
011-333-087-000	251 RANCHO MIRAGE RD	11,495.00	0.00	11,495.00	223.79	223.78
011-333-088-000	231 RANCHO MIRAGE RD	11,495.00	0.00	11,495.00	223.79	223.78
011-333-089-000	211 RANCHO MIRAGE RD	11,495.00	0.00	11,495.00	223.79	223.78
011-333-090-000	181 RANCHO MIRAGE RD	11,495.00	0.00	11,495.00	223.79	223.78
011-333-091-000	161 RANCHO MIRAGE RD	11,495.00	0.00	11,495.00	223.79	223.78
011-333-092-000	141 RANCHO MIRAGE RD	11,495.00	0.00	11,495.00	223.79	223.78
011-333-093-000	121 RANCHO MIRAGE RD	11,495.00	0.00	11,495.00	223.79	223.78

City of Madera
Community Facilities District No. 2005-1 (Public Services)
Charge Detail Report (Sorted by Assessor's Parcel Number)

Assessor's Parcel Number	Situs Adresse	Assessed Land Values	Assessed Structure Values	Total Assessed Values	FY 16/17 Max Rate	FY 16/17 Charge
011-333-094-000	101 RANCHO MIRAGE RD	11,495.00	0.00	11,495.00	223.79	223.78
011-341-001-000	803 KIWI ST	31,353.00	130,931.00	162,284.00	419.26	419.26
011-341-002-000	813 KIWI ST	24,108.00	147,366.00	171,474.00	419.26	419.26
011-341-003-000	823 KIWI ST	25,615.00	102,463.00	128,078.00	419.26	419.26
011-341-004-000	833 KIWI ST	25,615.00	104,000.00	129,615.00	419.26	419.26
011-341-005-000	843 KIWI ST	35,000.00	165,000.00	200,000.00	419.26	419.26
011-341-006-000	853 KIWI ST	42,018.00	133,307.00	175,325.00	419.26	419.26
011-341-007-000	863 KIWI ST	36,687.00	137,289.00	173,976.00	419.26	419.26
011-341-008-000	873 KIWI ST	42,018.00	143,391.00	185,409.00	419.26	419.26
011-341-009-000	883 KIWI ST	75,003.00	171,438.00	246,441.00	419.26	419.26
011-341-010-000	893 KIWI ST	42,018.00	136,562.00	178,580.00	419.26	419.26
011-341-011-000	903 KIWI ST	42,018.00	122,906.00	164,924.00	419.26	419.26
011-341-012-000	913 KIWI ST	31,353.00	126,459.00	157,812.00	419.26	419.26
011-341-013-000	923 KIWI ST	30,738.00	146,522.00	177,260.00	419.26	419.26
011-341-014-000	933 KIWI ST	24,591.00	102,463.00	127,054.00	419.26	419.26
011-341-015-000	943 KIWI ST	42,119.00	114,774.00	156,893.00	419.26	419.26
011-341-016-000	1466 GRAPE ST	25,113.00	140,635.00	165,748.00	419.26	419.26
011-341-017-000	1456 GRAPE ST	25,615.00	116,807.00	142,422.00	419.26	419.26
011-341-018-000	1446 GRAPE ST	42,119.00	121,092.00	163,211.00	419.26	419.26
011-341-019-000	1436 GRAPE ST	25,113.00	122,553.00	147,666.00	419.26	419.26
011-341-020-000	1036 PAPAYA ST	41,804.00	114,963.00	156,767.00	419.26	419.26
011-341-021-000	1026 PAPAYA ST	20,492.00	92,216.00	112,708.00	419.26	419.26
011-341-022-000	1016 PAPAYA ST	20,090.00	106,481.00	126,571.00	419.26	419.26
011-341-023-000	1006 PAPAYA ST	31,353.00	125,414.00	156,767.00	419.26	419.26
011-341-024-000	996 PAPAYA ST	20,090.00	137,621.00	157,711.00	419.26	419.26
011-341-025-000	986 PAPAYA ST	36,765.00	134,461.00	171,226.00	419.26	419.26
011-341-026-000	976 PAPAYA ST	30,738.00	79,921.00	110,659.00	419.26	419.26
011-341-027-000	966 PAPAYA ST	31,353.00	135,866.00	167,219.00	419.26	419.26
011-341-028-000	956 PAPAYA ST	35,862.00	102,463.00	138,325.00	419.26	419.26
011-341-029-000	946 PAPAYA ST	31,353.00	112,873.00	144,226.00	419.26	419.26
011-341-030-000	936 PAPAYA ST	63,555.00	125,075.00	188,630.00	419.26	419.26
011-341-031-000	926 PAPAYA ST	56,555.00	186,882.00	243,437.00	419.26	419.26
011-341-032-000	916 PAPAYA ST	56,868.00	95,474.00	152,342.00	419.26	419.26
011-341-033-000	906 PAPAYA ST	60,377.00	107,353.00	167,730.00	419.26	419.26
011-341-034-000	896 PAPAYA ST	56,386.00	100,011.00	156,397.00	419.26	419.26
011-341-035-000	886 PAPAYA ST	31,353.00	78,384.00	109,737.00	419.26	419.26
011-341-036-000	876 PAPAYA ST	20,492.00	111,684.00	132,176.00	419.26	419.26
011-341-037-000	866 PAPAYA ST	36,853.00	127,410.00	164,263.00	419.26	419.26
011-341-038-000	856 PAPAYA ST	36,853.00	101,085.00	137,938.00	419.26	419.26
011-341-039-000	846 PAPAYA ST	46,016.00	89,025.00	135,041.00	419.26	419.26
011-341-040-000	836 PAPAYA ST	31,587.00	126,358.00	157,945.00	419.26	419.26
011-341-041-000	826 PAPAYA ST	56,555.00	133,976.00	190,531.00	419.26	419.26
011-341-042-000	816 PAPAYA ST	25,615.00	92,216.00	117,831.00	419.26	419.26
011-341-043-000	806 PAPAYA ST	84,619.00	102,600.00	187,219.00	419.26	419.26
011-342-001-000	807 PAPAYA ST	52,523.00	136,457.00	188,980.00	419.26	419.26
011-342-002-000	817 PAPAYA ST	59,358.00	116,509.00	175,867.00	419.26	419.26
011-342-003-000	827 PAPAYA ST	42,119.00	105,298.00	147,417.00	419.26	419.26
011-342-004-000	837 PAPAYA ST	31,353.00	124,369.00	155,722.00	419.26	419.26
011-342-005-000	847 PAPAYA ST	47,431.00	130,384.00	177,815.00	419.26	419.26
011-342-006-000	857 PAPAYA ST	56,555.00	125,203.00	181,758.00	419.26	419.26
011-342-007-000	867 PAPAYA ST	51,701.00	98,187.00	149,888.00	419.26	419.26
011-342-008-000	887 PAPAYA ST	25,615.00	102,463.00	128,078.00	419.26	419.26
011-342-009-000	897 PAPAYA ST	55,661.00	101,402.00	157,063.00	419.26	419.26
011-342-010-000	907 PAPAYA ST	31,587.00	126,358.00	157,945.00	419.26	419.26
011-342-011-000	917 PAPAYA ST	61,151.00	126,773.00	187,924.00	419.26	419.26
011-342-012-000	927 PAPAYA ST	34,254.00	100,454.00	134,708.00	419.26	419.26
011-342-013-000	937 PAPAYA ST	25,113.00	134,608.00	159,721.00	419.26	419.26
011-342-014-000	947 PAPAYA ST	25,615.00	104,512.00	130,127.00	419.26	419.26
011-342-015-000	957 PAPAYA ST	30,738.00	119,881.00	150,619.00	419.26	419.26
011-342-016-000	967 PAPAYA ST	56,455.00	95,615.00	152,070.00	419.26	419.26
011-342-017-000	977 PAPAYA ST	35,862.00	109,123.00	144,985.00	419.26	419.26
011-342-018-000	987 PAPAYA ST	25,615.00	118,857.00	144,472.00	419.26	419.26
011-342-019-000	997 PAPAYA ST	42,119.00	115,827.00	157,946.00	419.26	419.26
011-342-020-000	1007 PAPAYA ST	30,738.00	140,169.00	170,907.00	419.26	419.26
011-342-021-000	1465 GRAPE ST	25,113.00	115,522.00	140,635.00	419.26	419.26
011-342-022-000	922 KIWI ST	36,853.00	121,092.00	157,945.00	419.26	419.26
011-342-023-000	912 KIWI ST	49,422.00	97,280.00	146,702.00	419.26	419.26
011-342-024-000	902 KIWI ST	58,828.00	94,924.00	153,752.00	419.26	419.26
011-342-025-000	924 PEAR ST	63,027.00	72,482.00	135,509.00	419.26	419.26
011-342-026-000	914 PEAR ST	56,324.00	173,498.00	229,822.00	419.26	419.26
011-342-027-000	904 PEAR ST	41,804.00	143,181.00	184,985.00	419.26	419.26
011-342-028-000	894 PEAR ST	30,738.00	87,093.00	117,831.00	419.26	419.26
011-342-029-000	884 PEAR ST	20,492.00	97,339.00	117,831.00	419.26	419.26
011-342-030-000	874 PEAR ST	25,000.00	125,000.00	150,000.00	419.26	419.26

City of Madera
Community Facilities District No. 2005-1 (Public Services)
Charge Detail Report (Sorted by Assessor's Parcel Number)

Assessor's Parcel Number	Situs Adresse	Assessed Land Values	Assessed Structure Values	Total Assessed Values	FY 16/17 Max Rate	FY 16/17 Charge
011-342-031-000	864 PEAR ST	53,635.00	100,047.00	153,682.00	419.26	419.26
011-342-032-000	854 PEAR ST	63,844.00	147,486.00	211,330.00	419.26	419.26
011-342-033-000	844 PEAR ST	31,353.00	94,061.00	125,414.00	419.26	419.26
011-342-034-000	834 PEAR ST	63,678.00	117,147.00	180,825.00	419.26	419.26
011-342-035-000	824 PEAR ST	51,972.00	141,966.00	193,938.00	419.26	419.26
011-342-036-000	814 PEAR ST	46,114.00	115,177.00	161,291.00	419.26	419.26
011-342-037-000	804 PEAR ST	60,377.00	144,373.00	204,750.00	419.26	419.26
011-342-038-000	825 PEAR ST	62,146.00	133,450.00	195,596.00	419.26	419.26
011-342-039-000	845 PEAR CT	50,410.00	141,644.00	192,054.00	419.26	419.26
011-342-040-000	855 PEAR CT	63,027.00	154,107.00	217,134.00	419.26	419.26
011-342-041-000	865 PEAR CT	58,706.00	170,910.00	229,616.00	419.26	419.26
011-342-042-000	875 PEAR CT	54,912.00	128,347.00	183,259.00	419.26	419.26
011-342-043-000	885 PEAR CT	25,000.00	175,000.00	200,000.00	419.26	419.26
011-342-044-000	905 PEAR ST	70,430.00	135,423.00	205,853.00	419.26	419.26
011-342-045-000	882 KIWI ST	63,826.00	136,704.00	200,530.00	419.26	419.26
011-342-046-000	872 KIWI ST	25,000.00	137,000.00	162,000.00	419.26	419.26
011-342-047-000	862 KIWI ST	31,353.00	129,908.00	161,261.00	419.26	419.26
011-342-048-000	852 KIWI ST	31,353.00	117,994.00	149,347.00	419.26	419.26
011-342-049-000	842 KIWI ST	31,353.00	129,176.00	160,529.00	419.26	419.26
011-342-050-000	832 KIWI ST	31,353.00	101,376.00	132,729.00	419.26	419.26
011-342-051-000	822 KIWI ST	31,353.00	120,607.00	151,960.00	419.26	419.26
011-342-052-000	812 KIWI ST	30,738.00	112,197.00	142,935.00	419.26	419.26
011-342-053-000	802 KIWI ST	31,353.00	121,756.00	153,109.00	419.26	419.26
011-342-054-000	1468 E ALMOND AVE	51,261.00	92,981.00	144,242.00	419.26	419.26
011-342-055-000	1458 E ALMOND AVE	30,136.00	149,676.00	179,812.00	419.26	419.26
011-342-056-000	1448 E ALMOND AVE	35,158.00	140,334.00	175,492.00	419.26	419.26
011-342-057-000	1438 E ALMOND AVE	25,000.00	190,900.00	215,900.00	419.26	419.26
011-342-058-000	1428 E ALMOND AVE	25,000.00	167,800.00	192,800.00	419.26	419.26
011-342-059-000	1418 E ALMOND AVE	37,501.00	0.00	37,501.00	419.26	419.26
011-342-060-000	1408 E ALMOND AVE	62,146.00	120,475.00	182,621.00	419.26	419.26
011-350-001-000	1292 PEACH CT	37,501.00	0.00	37,501.00	419.26	419.26
011-350-002-000	1282 PEACH CT	35,000.00	128,000.00	163,000.00	419.26	419.26
011-350-003-000	1275 NECTARINE ST	25,113.00	144,854.00	169,967.00	419.26	419.26
011-350-004-000	1265 NECTARINE ST	20,090.00	147,265.00	167,355.00	419.26	419.26
011-350-005-000	1255 NECTARINE ST	37,501.00	0.00	37,501.00	419.26	419.26
011-350-006-000	1245 NECTARINE ST	25,000.00	185,900.00	210,900.00	419.26	419.26
011-350-007-000	681 PEACH ST	30,000.00	152,200.00	182,200.00	419.26	419.26
011-350-008-000	1222 PEACH CT	25,113.00	165,849.00	190,962.00	419.26	419.26
011-350-009-000	1232 PEACH CT	25,000.00	177,000.00	202,000.00	419.26	419.26
011-350-010-000	1242 PEACH CT	25,000.00	174,980.00	199,980.00	419.26	419.26
011-350-011-000	1252 PEACH CT	37,501.00	0.00	37,501.00	419.26	419.26
011-350-012-000	1262 PEACH CT	25,000.00	180,900.00	205,900.00	419.26	419.26
011-350-013-000	1272 PEACH CT	30,000.00	172,900.00	202,900.00	419.26	419.26
011-350-014-000	1291 PEACH CT	30,000.00	166,500.00	196,500.00	419.26	419.26
011-350-015-000	1281 PEACH CT	37,501.00	0.00	37,501.00	419.26	419.26
011-350-016-000	1271 PEACH CT	20,090.00	173,082.00	193,172.00	419.26	419.26
011-350-017-000	1261 PEACH CT	37,501.00	0.00	37,501.00	419.26	419.26
011-350-018-000	1251 PEACH CT	37,501.00	0.00	37,501.00	419.26	419.26
011-350-019-000	1241 PEACH CT	25,000.00	189,200.00	214,200.00	419.26	419.26
011-350-020-000	1231 PEACH CT	25,000.00	179,700.00	204,700.00	419.26	419.26
011-350-021-000	1221 PEACH CT	25,000.00	180,600.00	205,600.00	419.26	419.26
011-350-022-000	1211 PEACH CT	37,501.00	0.00	37,501.00	419.26	419.26
011-350-023-000	1201 PEACH CT	37,501.00	0.00	37,501.00	419.26	419.26
011-350-024-000	1208 CHERRY ST	37,501.00	0.00	37,501.00	419.26	419.26
011-350-025-000	1218 CHERRY ST	30,000.00	191,000.00	221,000.00	419.26	419.26
011-350-026-000	1228 CHERRY ST	37,501.00	0.00	37,501.00	419.26	419.26
011-350-027-000	1238 CHERRY ST	37,501.00	0.00	37,501.00	419.26	419.26
011-350-028-000	1248 CHERRY ST	37,501.00	0.00	37,501.00	419.26	419.26
011-350-029-000	1258 CHERRY ST	25,000.00	190,900.00	215,900.00	419.26	419.26
011-350-030-000	1268 CHERRY ST	37,501.00	0.00	37,501.00	419.26	419.26
011-350-031-000	1278 CHERRY ST	37,501.00	0.00	37,501.00	419.26	419.26
011-350-032-000	1288 CHERRY ST	37,501.00	0.00	37,501.00	419.26	419.26
011-350-033-000	1298 CHERRY ST	35,000.00	195,200.00	230,200.00	419.26	419.26
011-350-034-000	336 S KNOX ST	37,501.00	0.00	37,501.00	419.26	419.26
011-350-035-000	356 S KNOX ST	37,501.00	0.00	37,501.00	419.26	419.26
011-350-036-000	376 S KNOX ST	37,501.00	0.00	37,501.00	419.26	419.26
011-350-037-000	396 S KNOX ST	37,501.00	0.00	37,501.00	419.26	419.26
011-350-038-000	406 S KNOX ST	37,501.00	0.00	37,501.00	419.26	419.26
011-350-039-000	426 S KNOX ST	37,501.00	0.00	37,501.00	419.26	419.26
011-350-040-000	446 S KNOX ST	37,501.00	0.00	37,501.00	419.26	419.26
011-350-041-000	466 S KNOX ST	37,501.00	0.00	37,501.00	419.26	419.26
011-350-042-000	486 S KNOX ST	37,501.00	0.00	37,501.00	419.26	419.26
011-350-043-000	1297 CHERRY ST	35,000.00	204,100.00	239,100.00	419.26	419.26
011-350-044-000	1287 CHERRY ST	37,501.00	0.00	37,501.00	419.26	419.26

City of Madera
Community Facilities District No. 2005-1 (Public Services)
Charge Detail Report (Sorted by Assessor's Parcel Number)

Assessor's Parcel Number	Situs Adresse	Assessed Land Values	Assessed Structure Values	Total Assessed Values	FY 16/17 Max Rate	FY 16/17 Charge
011-350-045-000	1277 CHERRY ST	37,501.00	0.00	37,501.00	419.26	419.26
011-350-046-000	1267 CHERRY ST	37,501.00	0.00	37,501.00	419.26	419.26
011-350-047-000	1257 CHERRY ST	37,501.00	0.00	37,501.00	419.26	419.26
011-350-048-000	1247 CHERRY ST	37,501.00	0.00	37,501.00	419.26	419.26
011-350-049-000	1237 CHERRY ST	37,501.00	0.00	37,501.00	419.26	419.26
011-350-050-000	1227 CHERRY ST	37,501.00	0.00	37,501.00	419.26	419.26
011-350-051-000	1217 CHERRY ST	37,501.00	0.00	37,501.00	419.26	419.26
011-350-052-000	1207 CHERRY ST	37,501.00	0.00	37,501.00	419.26	419.26
011-350-053-000	1197 CHERRY ST	37,501.00	0.00	37,501.00	419.26	419.26
011-350-054-000	1187 CHERRY ST	30,000.00	165,200.00	195,200.00	419.26	419.26
011-350-055-000	504 PEACH ST	35,000.00	168,000.00	203,000.00	419.26	419.26
011-350-056-000	524 PEACH ST	37,501.00	0.00	37,501.00	419.26	419.26
011-350-057-000	544 PEACH ST	25,113.00	147,265.00	172,378.00	419.26	419.26
011-350-058-000	564 PEACH ST	30,136.00	160,726.00	190,862.00	419.26	419.26
011-350-059-000	584 PEACH ST	30,136.00	152,288.00	182,424.00	419.26	419.26
011-350-060-000	604 PEACH ST	28,127.00	165,950.00	194,077.00	419.26	419.26
011-350-061-000	624 PEACH ST	30,136.00	153,091.00	183,227.00	419.26	419.26
011-350-062-000	644 PEACH ST	30,136.00	130,188.00	160,324.00	419.26	419.26
011-350-063-000	664 PEACH ST	35,000.00	137,500.00	172,500.00	419.26	419.26
011-350-068-000		37,501.00	0.00	37,501.00	419.26	419.26
011-351-001-000	649 PEAR ST	62,100.00	120,873.00	182,973.00	419.26	419.26
011-351-002-000	629 PEAR ST	51,734.00	140,490.00	192,224.00	419.26	419.26
011-351-003-000	609 PEAR ST	45,835.00	145,551.00	191,386.00	419.26	419.26
011-351-004-000	589 PEAR ST	41,804.00	88,835.00	130,639.00	419.26	419.26
011-351-005-000	569 PEAR ST	41,804.00	87,789.00	129,593.00	419.26	419.26
011-351-006-000	549 PEAR ST	41,804.00	105,945.00	147,749.00	419.26	419.26
011-351-007-000	529 PEAR ST	41,804.00	120,398.00	162,202.00	419.26	419.26
011-351-008-000	519 PEAR ST	41,804.00	135,866.00	177,670.00	419.26	419.26
011-351-009-000	509 PEAR ST	52,256.00	125,623.00	177,879.00	419.26	419.26
011-351-010-000	1427 APPLE ST	40,181.00	125,366.00	165,547.00	419.26	419.26
011-351-011-000	1417 APPLE ST	41,804.00	88,312.00	130,116.00	419.26	419.26
011-351-012-000	1407 APPLE ST	41,804.00	94,374.00	136,178.00	419.26	419.26
011-351-013-000	1397 APPLE ST	41,804.00	120,398.00	162,202.00	419.26	419.26
011-351-014-000	1387 APPLE ST	31,353.00	118,621.00	149,974.00	419.26	419.26
011-351-015-000	516 PEAR ST	31,353.00	168,264.00	199,617.00	419.26	419.26
011-351-016-000	536 PEAR ST	30,738.00	126,029.00	156,767.00	419.26	419.26
011-351-017-000	556 PEAR ST	31,353.00	133,147.00	164,500.00	419.26	419.26
011-351-018-000	576 PEAR ST	31,353.00	160,634.00	191,987.00	419.26	419.26
011-351-019-000	596 PEAR ST	69,172.00	151,048.00	220,220.00	419.26	419.26
011-351-020-000	616 PEAR ST	49,254.00	106,447.00	155,701.00	419.26	419.26
011-351-021-000	636 PEAR ST	53,348.00	146,549.00	199,897.00	419.26	419.26
011-351-022-000	656 PEAR ST	72,772.00	168,486.00	241,258.00	419.26	419.26
011-351-023-000	676 PEAR ST	30,136.00	146,863.00	176,999.00	419.26	419.26
011-351-024-000	696 PEAR ST	25,000.00	165,300.00	190,300.00	419.26	419.26
011-351-025-000	716 PEAR ST	35,000.00	169,000.00	204,000.00	419.26	419.26
011-351-026-000	736 PEAR ST	37,501.00	0.00	37,501.00	419.26	419.26
011-351-027-000	756 PEAR ST	37,501.00	0.00	37,501.00	419.26	419.26
011-351-028-000	776 PEAR ST	37,501.00	0.00	37,501.00	419.26	419.26
011-351-029-000	796 PEAR ST	37,501.00	0.00	37,501.00	419.26	419.26
011-351-030-000	713 HACIENDA ST	30,738.00	129,550.00	160,288.00	419.26	419.26
011-351-031-000	693 HACIENDA ST	26,128.00	121,931.00	148,059.00	419.26	419.26
011-351-032-000	673 HACIENDA ST	25,615.00	107,688.00	133,303.00	419.26	419.26
011-351-033-000	653 HACIENDA ST	26,128.00	121,442.00	147,570.00	419.26	419.26
011-351-034-000	633 HACIENDA ST	30,738.00	126,029.00	156,767.00	419.26	419.26
011-351-035-000	613 HACIENDA ST	40,985.00	117,829.00	158,814.00	419.26	419.26
011-351-036-000	593 HACIENDA ST	30,738.00	130,742.00	161,480.00	419.26	419.26
011-351-037-000	573 HACIENDA ST	30,738.00	122,955.00	153,693.00	419.26	419.26
011-351-038-000	553 HACIENDA ST	30,738.00	121,620.00	152,358.00	419.26	419.26
011-351-039-000	533 HACIENDA ST	30,738.00	128,407.00	159,145.00	419.26	419.26
011-351-040-000	513 HACIENDA ST	30,738.00	125,049.00	155,787.00	419.26	419.26
011-351-041-000	1367 APPLE CT	41,804.00	100,122.00	141,926.00	419.26	419.26
011-351-042-000	1357 APPLE CT	41,804.00	96,987.00	138,791.00	419.26	419.26
011-351-043-000	1347 APPLE CT	41,804.00	114,963.00	156,767.00	419.26	419.26
011-351-044-000	1337 APPLE CT	41,804.00	103,257.00	145,061.00	419.26	419.26
011-351-045-000	1327 APPLE CT	41,804.00	117,680.00	159,484.00	419.26	419.26
011-351-046-000	1317 APPLE CT	30,738.00	143,448.00	174,186.00	419.26	419.26
011-351-047-000	1307 APPLE CT	30,738.00	126,029.00	156,767.00	419.26	419.26
011-351-048-000	1308 APPLE CT	31,353.00	122,278.00	153,631.00	419.26	419.26
011-351-049-000	1318 APPLE CT	20,492.00	144,063.00	164,555.00	419.26	419.26
011-351-050-000	1328 APPLE CT	31,353.00	126,459.00	157,812.00	419.26	419.26
011-351-051-000	1338 APPLE CT	31,353.00	106,288.00	137,641.00	419.26	419.26
011-351-052-000	1348 APPLE CT	31,353.00	128,549.00	159,902.00	419.26	419.26
011-351-053-000	1358 APPLE CT	31,353.00	157,813.00	189,166.00	419.26	419.26
011-351-054-000	1368 APPLE CT	31,353.00	140,045.00	171,398.00	419.26	419.26

City of Madera
Community Facilities District No. 2005-1 (Public Services)
Charge Detail Report (Sorted by Assessor's Parcel Number)

Assessor's Parcel Number	Situs Adresse	Assessed Land Values	Assessed Structure Values	Total Assessed Values	FY 16/17 Max Rate	FY 16/17 Charge
011-351-060-000	1321 POMEGRANATE ST	20,090.00	140,133.00	160,223.00	419.26	419.26
011-351-061-000	1311 POMEGRANATE ST	35,158.00	104,773.00	139,931.00	419.26	419.26
011-351-062-000	1301 POMEGRANATE ST	25,113.00	133,302.00	158,415.00	419.26	419.26
011-351-063-000	602 HACIENDA ST	31,353.00	156,768.00	188,121.00	419.26	419.26
011-351-064-000	622 HACIENDA ST	40,985.00	118,745.00	159,730.00	419.26	419.26
011-351-065-000	642 HACIENDA ST	20,090.00	150,379.00	170,469.00	419.26	419.26
011-351-066-000	662 HACIENDA ST	30,738.00	120,086.00	150,824.00	419.26	419.26
011-351-067-000	682 HACIENDA ST	25,615.00	111,210.00	136,825.00	419.26	419.26
011-351-068-000	702 HACIENDA ST	51,231.00	122,955.00	174,186.00	419.26	419.26
011-351-069-000	711 PERSIMMON ST	25,615.00	157,280.00	182,895.00	419.26	419.26
011-351-070-000	691 PERSIMMON ST	30,738.00	136,378.00	167,116.00	419.26	419.26
011-351-071-000	671 PERSIMMON ST	30,136.00	139,731.00	169,867.00	419.26	419.26
011-351-072-000	651 PERSIMMON ST	25,113.00	130,891.00	156,004.00	419.26	419.26
011-351-073-000	631 PERSIMMON ST	30,738.00	132,689.00	163,427.00	419.26	419.26
011-351-074-000	611 PERSIMMON ST	25,615.00	156,973.00	182,588.00	419.26	419.26
011-351-075-000	1312 POMEGRANATE ST	28,689.00	133,202.00	161,891.00	419.26	419.26
011-351-076-000	1302 POMEGRANATE ST	35,862.00	147,546.00	183,408.00	419.26	419.26
011-351-077-000	658 PERSIMMON ST	40,985.00	121,217.00	162,202.00	419.26	419.26
011-351-078-000	678 PERSIMMON ST	30,738.00	133,284.00	164,022.00	419.26	419.26
011-351-079-000	698 PERSIMMON ST	32,173.00	133,202.00	165,375.00	419.26	419.26
011-351-080-000	718 PERSIMMON ST	25,615.00	155,743.00	181,358.00	419.26	419.26
011-351-086-000		20,090.00	147,466.00	167,556.00	419.26	419.26
011-352-001-000	789 PEAR ST	30,136.00	141,740.00	171,876.00	419.26	419.26
011-352-002-000	769 PEAR ST	25,113.00	165,950.00	191,063.00	419.26	419.26
011-352-003-000	749 PEAR ST	30,136.00	121,549.00	151,685.00	419.26	419.26
011-352-004-000	729 PEAR ST	30,136.00	132,097.00	162,233.00	419.26	419.26
011-352-005-000	709 PEAR ST	30,136.00	140,233.00	170,369.00	419.26	419.26
011-352-006-000	689 PEAR ST	35,000.00	153,000.00	188,000.00	419.26	419.26
011-352-007-000	692 BLUEBERRY LN	55,637.00	124,246.00	179,883.00	419.26	419.26
011-352-008-000	712 BLUEBERRY LN	61,148.00	124,682.00	185,830.00	419.26	419.26
011-352-009-000	732 BLUEBERRY LN	54,727.00	154,266.00	208,993.00	419.26	419.26
011-352-010-000	752 BLUEBERRY LN	30,136.00	137,320.00	167,456.00	419.26	419.26
011-352-011-000	772 BLUEBERRY LN	49,108.00	117,992.00	167,100.00	419.26	419.26
011-352-012-000	792 BLUEBERRY LN	58,828.00	121,377.00	180,205.00	419.26	419.26
011-352-013-000	797 BLUEBERRY LN	59,671.00	118,179.00	177,850.00	419.26	419.26
011-352-014-000	777 BLUEBERRY LN	61,581.00	154,592.00	216,173.00	419.26	419.26
011-352-015-000	757 BLUEBERRY LN	30,000.00	100,000.00	130,000.00	419.26	419.26
011-352-016-000	737 BLUEBERRY LN	67,848.00	98,869.00	166,717.00	419.26	419.26
011-352-017-000	717 BLUEBERRY LN	74,500.00	128,675.00	203,175.00	419.26	419.26
011-352-018-000	697 BLUEBERRY LN	73,012.00	139,034.00	212,046.00	419.26	419.26
011-352-019-000	694 KIWI ST	30,136.00	156,005.00	186,141.00	419.26	419.26
011-352-020-000	714 KIWI ST	25,615.00	125,312.00	150,927.00	419.26	419.26
011-352-021-000	734 KIWI ST	37,501.00	0.00	37,501.00	419.26	419.26
011-352-022-000	754 KIWI ST	37,501.00	0.00	37,501.00	419.26	419.26
011-352-023-000	774 KIWI ST	37,501.00	0.00	37,501.00	419.26	419.26
011-352-024-000	794 KIWI ST	37,501.00	0.00	37,501.00	419.26	419.26
011-352-025-000	791 KIWI ST	37,501.00	0.00	37,501.00	223.79	223.78
011-352-026-000	771 KIWI ST	37,501.00	0.00	37,501.00	419.26	419.26
011-352-027-000	761 KIWI ST	37,501.00	0.00	37,501.00	419.26	419.26
011-352-028-000	751 KIWI ST	37,501.00	0.00	37,501.00	419.26	419.26
011-352-029-000	731 KIWI ST	37,501.00	0.00	37,501.00	419.26	419.26
011-352-030-000	711 KIWI ST	37,501.00	0.00	37,501.00	419.26	419.26
011-352-031-000	691 KIWI ST	37,501.00	0.00	37,501.00	419.26	419.26
011-352-032-000	671 KIWI ST	37,501.00	0.00	37,501.00	419.26	419.26
011-352-033-000	1498 MANDARIN ST	37,501.00	0.00	37,501.00	419.26	419.26
011-352-034-000	1488 MANDARIN ST	37,501.00	0.00	37,501.00	419.26	419.26
011-352-035-000	1478 MANDARIN ST	37,501.00	0.00	37,501.00	419.26	419.26
011-352-036-000	1468 MANDARIN ST	37,501.00	0.00	37,501.00	419.26	419.26
011-352-037-000	1458 MANDARIN ST	37,501.00	0.00	37,501.00	419.26	419.26
011-352-038-000	1448 MANDARIN ST	37,501.00	0.00	37,501.00	419.26	419.26
011-352-039-000	1438 MANDARIN ST	37,501.00	0.00	37,501.00	419.26	419.26
011-352-040-000	1428 MANDARIN ST	37,501.00	0.00	37,501.00	419.26	419.26
011-352-041-000	1418 MANDARIN ST	35,000.00	175,700.00	210,700.00	419.26	419.26
011-353-001-000	738 PERSIMMON ST	30,738.00	116,295.00	147,033.00	419.26	419.26
011-353-002-000	758 PERSIMMON ST	25,615.00	139,042.00	164,657.00	419.26	419.26
011-353-003-000	778 PERSIMMON ST	25,615.00	148,571.00	174,186.00	419.26	419.26
011-353-004-000	1306 COCONUT ST	45,083.00	125,927.00	171,010.00	419.26	419.26
011-353-005-000	1316 COCONUT ST	25,113.00	160,726.00	185,839.00	419.26	419.26
011-353-006-000	1326 COCONUT ST	20,492.00	151,645.00	172,137.00	419.26	419.26
011-353-007-000	1336 COCONUT ST	25,113.00	163,539.00	188,652.00	419.26	419.26
011-353-008-000	1346 COCONUT ST	51,231.00	125,785.00	177,016.00	419.26	419.26
011-353-009-000	1356 COCONUT ST	40,985.00	95,085.00	136,070.00	419.26	419.26
011-353-010-000	773 HACIENDA ST	40,985.00	122,390.00	163,375.00	419.26	419.26
011-353-011-000	753 HACIENDA ST	37,501.00	0.00	37,501.00	419.26	419.26

City of Madera
Community Facilities District No. 2005-1 (Public Services)
Charge Detail Report (Sorted by Assessor's Parcel Number)

Assessor's Parcel Number	Situs Adresse	Assessed Land Values	Assessed Structure Values	Total Assessed Values	FY 16/17 Max Rate	FY 16/17 Charge
011-353-012-000	733 HACIENDA ST	25,113.00	120,544.00	145,657.00	419.26	419.26
011-353-013-000	722 HACIENDA ST	30,738.00	111,960.00	142,698.00	419.26	419.26
011-353-014-000	742 HACIENDA ST	30,738.00	150,108.00	180,846.00	419.26	419.26
011-353-015-000	751 PERSIMMON ST	25,615.00	155,743.00	181,358.00	419.26	419.26
011-353-016-000	731 PERSIMMON ST	30,738.00	127,054.00	157,792.00	419.26	419.26
011-360-001-000	223 DRAKE ST	11,581.00	0.00	11,581.00	223.79	223.78
011-360-002-000	203 DRAKE ST	11,581.00	0.00	11,581.00	223.79	223.78
011-360-003-000	193 DRAKE ST	11,581.00	0.00	11,581.00	223.79	223.78
011-360-004-000	173 DRAKE ST	11,581.00	0.00	11,581.00	223.79	223.78
011-360-005-000	153 DRAKE ST	11,581.00	0.00	11,581.00	223.79	223.78
011-360-006-000	93 DRAKE ST	11,581.00	0.00	11,581.00	223.79	223.78
011-360-007-000	50 DRAKE ST	11,581.00	0.00	11,581.00	223.79	223.78
011-360-008-000	70 DRAKE ST	11,581.00	0.00	11,581.00	223.79	223.78
011-360-009-000	90 DRAKE ST	11,581.00	0.00	11,581.00	223.79	223.78
011-360-010-000	120 DRAKE ST	11,581.00	0.00	11,581.00	223.79	223.78
011-360-011-000	140 DRAKE ST	11,581.00	0.00	11,581.00	223.79	223.78
011-360-012-000	160 DRAKE ST	11,581.00	0.00	11,581.00	223.79	223.78
011-360-013-000	180 DRAKE ST	11,581.00	0.00	11,581.00	223.79	223.78
011-360-014-000	200 DRAKE ST	11,581.00	0.00	11,581.00	223.79	223.78
011-360-015-000	205 PEERLESS ST	11,581.00	0.00	11,581.00	223.79	223.78
011-360-016-000	185 PEERLESS ST	11,581.00	0.00	11,581.00	223.79	223.78
011-360-017-000	165 PEERLESS ST	11,581.00	0.00	11,581.00	223.79	223.78
011-360-018-000	135 PEERLESS ST	11,581.00	0.00	11,581.00	223.79	223.78
011-360-019-000	115 PEERLESS ST	11,581.00	0.00	11,581.00	223.79	223.78
011-360-020-000	85 PEERLESS ST	11,581.00	0.00	11,581.00	223.79	223.78
011-360-021-000	65 PEERLESS ST	11,581.00	0.00	11,581.00	223.79	223.78
011-360-022-000	45 PEERLESS ST	11,581.00	0.00	11,581.00	223.79	223.78
011-360-023-000	48 PEERLESS ST	11,581.00	0.00	11,581.00	223.79	223.78
011-360-024-000	68 PEERLESS ST	11,581.00	0.00	11,581.00	223.79	223.78
011-360-025-000	88 PEERLESS ST	11,581.00	0.00	11,581.00	223.79	223.78
011-360-026-000	118 PEERLESS ST	11,581.00	0.00	11,581.00	223.79	223.78
011-360-027-000	138 PEERLESS ST	11,581.00	0.00	11,581.00	223.79	223.78
011-360-028-000	168 PEERLESS ST	11,581.00	0.00	11,581.00	223.79	223.78
011-360-029-000	188 PEERLESS ST	11,581.00	0.00	11,581.00	223.79	223.78
011-360-030-000	208 PEERLESS ST	11,581.00	0.00	11,581.00	223.79	223.78
011-360-031-000	201 SOLANO ST	11,581.00	0.00	11,581.00	223.79	223.78
011-360-032-000	181 SOLANO ST	11,581.00	0.00	11,581.00	223.79	223.78
011-360-033-000	161 SOLANO ST	11,581.00	0.00	11,581.00	223.79	223.78
011-360-034-000	141 SOLANO ST	11,581.00	0.00	11,581.00	223.79	223.78
011-360-035-000	121 SOLANO ST	11,581.00	0.00	11,581.00	223.79	223.78
011-360-036-000	91 SOLANO ST	11,581.00	0.00	11,581.00	223.79	223.78
011-360-037-000	71 SOLANO ST	11,581.00	0.00	11,581.00	223.79	223.78
011-360-038-000	51 SOLANO ST	11,581.00	0.00	11,581.00	223.79	223.78
011-360-039-000	1293 PADRE ST	11,581.00	0.00	11,581.00	223.79	223.78
011-360-040-000	1283 PADRE ST	11,581.00	0.00	11,581.00	223.79	223.78
011-360-041-000	1273 PADRE ST	11,581.00	0.00	11,581.00	223.79	223.78
011-360-042-000	1263 PADRE ST	11,581.00	0.00	11,581.00	223.79	223.78
011-360-043-000	1253 PADRE ST	11,581.00	0.00	11,581.00	223.79	223.78
011-360-044-000	1243 PADRE ST	11,581.00	0.00	11,581.00	223.79	223.78
011-360-045-000	1233 PADRE ST	11,581.00	0.00	11,581.00	223.79	223.78
011-360-046-000	1223 PADRE ST	11,581.00	0.00	11,581.00	223.79	223.78
011-360-047-000	1213 PADRE ST	11,581.00	0.00	11,581.00	223.79	223.78
011-360-048-000	1203 PADRE ST	11,581.00	0.00	11,581.00	223.79	223.78
011-360-049-000	46 SOLANO ST	11,581.00	0.00	11,581.00	223.79	223.78
011-360-050-000	66 SOLANO ST	11,581.00	0.00	11,581.00	223.79	223.78
011-360-051-000	86 SOLANO ST	11,581.00	0.00	11,581.00	223.79	223.78
011-360-052-000	116 SOLANO ST	11,581.00	0.00	11,581.00	223.79	223.78
011-360-053-000	136 SOLANO ST	11,581.00	0.00	11,581.00	223.79	223.78
011-360-054-000	156 SOLANO ST	11,581.00	0.00	11,581.00	223.79	223.78
011-360-055-000	176 SOLANO ST	11,581.00	0.00	11,581.00	223.79	223.78
011-360-056-000	196 SOLANO ST	11,581.00	0.00	11,581.00	223.79	223.78
011-360-057-000	206 SOLANO ST	11,581.00	0.00	11,581.00	223.79	223.78
011-360-058-000	226 SOLANO ST	11,581.00	0.00	11,581.00	223.79	223.78
011-360-059-000	246 SOLANO ST	11,581.00	0.00	11,581.00	223.79	223.78
011-360-060-000	1226 SAURET ST	11,581.00	0.00	11,581.00	223.79	223.78
011-360-061-000	1236 SAURET ST	11,581.00	0.00	11,581.00	223.79	223.78
011-360-062-000	1246 SAURET ST	11,581.00	0.00	11,581.00	223.79	223.78
011-360-063-000	1256 SAURET ST	11,581.00	0.00	11,581.00	223.79	223.78
011-360-064-000	1266 SAURET ST	11,581.00	0.00	11,581.00	223.79	223.78
011-360-065-000	1276 SAURET ST	11,581.00	0.00	11,581.00	223.79	223.78
011-360-066-000	1286 SAURET ST	11,581.00	0.00	11,581.00	223.79	223.78
011-360-067-000	1296 SAURET ST	11,581.00	0.00	11,581.00	223.79	223.78
011-361-001-000	266 SOLANO ST	11,581.00	0.00	11,581.00	223.79	223.78
011-361-002-000	286 SOLANO ST	11,581.00	0.00	11,581.00	223.79	223.78

City of Madera
Community Facilities District No. 2005-1 (Public Services)
Charge Detail Report (Sorted by Assessor's Parcel Number)

Assessor's Parcel Number	Situs Adresse	Assessed Land Values	Assessed Structure Values	Total Assessed Values	FY 16/17 Max Rate	FY 16/17 Charge
011-361-003-000	316 SOLANO ST	11,581.00	0.00	11,581.00	223.79	223.78
011-361-004-000	336 SOLANO ST	11,581.00	0.00	11,581.00	223.79	223.78
011-361-005-000	356 SOLANO ST	11,581.00	0.00	11,581.00	223.79	223.78
011-361-006-000	376 SOLANO ST	11,581.00	0.00	11,581.00	223.79	223.78
011-361-007-000	396 SOLANO ST	11,581.00	0.00	11,581.00	223.79	223.78
011-361-008-000	406 SOLANO ST	11,581.00	0.00	11,581.00	223.79	223.78
011-361-009-000	1234 CARMEL ST	11,581.00	0.00	11,581.00	223.79	223.78
011-361-010-000	1244 CARMEL ST	11,581.00	0.00	11,581.00	223.79	223.78
011-361-011-000	1254 CARMEL ST	11,581.00	0.00	11,581.00	223.79	223.78
011-361-012-000	1264 CARMEL ST	11,581.00	0.00	11,581.00	223.79	223.78
011-361-013-000	1274 CARMEL ST	11,581.00	0.00	11,581.00	223.79	223.78
011-361-014-000	1275 MILOW ST	11,581.00	0.00	11,581.00	223.79	223.78
011-361-015-000	1265 MILOW ST	11,581.00	0.00	11,581.00	223.79	223.78
011-361-016-000	1255 MILOW ST	11,581.00	0.00	11,581.00	223.79	223.78
011-361-017-000	1245 MILOW ST	11,581.00	0.00	11,581.00	223.79	223.78
011-361-018-000	1235 MILOW ST	11,581.00	0.00	11,581.00	223.79	223.78
011-361-019-000	1238 MILOW ST	11,581.00	0.00	11,581.00	223.79	223.78
011-361-020-000	1248 MILOW ST	11,581.00	0.00	11,581.00	223.79	223.78
011-361-021-000	1258 MILOW ST	11,581.00	0.00	11,581.00	223.79	223.78
011-361-022-000	1268 MILOW ST	11,581.00	0.00	11,581.00	223.79	223.78
011-361-023-000	1278 MILOW ST	11,581.00	0.00	11,581.00	223.79	223.78
011-361-024-000	1288 MILOW ST	11,581.00	0.00	11,581.00	223.79	223.78
011-361-025-000	1298 MILOW ST	11,581.00	0.00	11,581.00	223.79	223.78
011-361-026-000	393 FRITZ ST	11,581.00	0.00	11,581.00	223.79	223.78
011-361-027-000	373 FRITZ ST	11,581.00	0.00	11,581.00	223.79	223.78
011-361-028-000	353 FRITZ ST	11,581.00	0.00	11,581.00	223.79	223.78
011-361-029-000	333 FRITZ ST	11,581.00	0.00	11,581.00	223.79	223.78
011-361-030-000	313 FRITZ ST	11,581.00	0.00	11,581.00	223.79	223.78
011-361-031-000	283 FRITZ ST	11,581.00	0.00	11,581.00	223.79	223.78
011-361-032-000	1291 CARMEL ST	11,581.00	0.00	11,581.00	223.79	223.78
011-361-033-000	1271 CARMEL ST	11,581.00	0.00	11,581.00	223.79	223.78
011-361-034-000	1261 CARMEL ST	11,581.00	0.00	11,581.00	223.79	223.78
011-361-035-000	1251 CARMEL ST	11,581.00	0.00	11,581.00	223.79	223.78
011-361-036-000	1241 CARMEL ST	11,581.00	0.00	11,581.00	223.79	223.78
011-361-037-000	1231 CARMEL ST	11,581.00	0.00	11,581.00	223.79	223.78
012-254-005-000	1172 DIAMOND WAY	17,747.00	0.00	17,747.00	223.79	223.78
012-254-006-000	1154 DIAMOND WAY	46,898.00	93,795.00	140,693.00	419.26	419.26
012-254-007-000	1136 DIAMOND WAY	49,897.00	99,795.00	149,692.00	419.26	419.26
012-254-008-000	1118 DIAMOND WAY	55,511.00	111,022.00	166,533.00	419.26	419.26
012-254-009-000	1100 DIAMOND WAY	67,054.00	134,701.00	201,755.00	419.26	419.26
012-254-010-000	1094 DIAMOND WAY	73,582.00	145,977.00	219,559.00	419.26	419.26
012-254-011-000	1078 DIAMOND WAY	17,747.00	0.00	17,747.00	223.79	223.78
012-254-012-000	1060 DIAMOND WAY	17,747.00	0.00	17,747.00	223.79	223.78
012-254-013-000	1042 DIAMOND WAY	17,747.00	0.00	17,747.00	223.79	223.78
012-254-014-000	1024 DIAMOND WAY	17,747.00	0.00	17,747.00	419.26	419.26
012-254-015-000	1006 DIAMOND WAY	17,747.00	0.00	17,747.00	419.26	419.26
012-254-016-000	303 JOYA DR	17,747.00	0.00	17,747.00	419.26	419.26
012-254-017-000	309 JOYA DR	17,747.00	0.00	17,747.00	419.26	419.26
012-254-018-000	319 JOYA DR	17,747.00	0.00	17,747.00	419.26	419.26
012-254-019-000	349 JOYA DR	17,747.00	0.00	17,747.00	419.26	419.26
012-254-020-000	365 JOYA DR	17,747.00	0.00	17,747.00	419.26	419.26
012-254-021-000	381 JOYA DR	17,747.00	0.00	17,747.00	419.26	419.26
012-254-022-000	393 JOYA DR	17,747.00	0.00	17,747.00	419.26	419.26
012-254-023-000	415 JOYA DR	17,747.00	0.00	17,747.00	419.26	419.26
012-254-024-000	437 JOYA DR	17,747.00	0.00	17,747.00	419.26	419.26
012-254-025-000	461 JOYA DR	17,747.00	0.00	17,747.00	419.26	419.26
012-254-026-000	473 JOYA DR	38,668.00	77,234.00	115,902.00	419.26	419.26
012-254-027-000	495 JOYA DR	50,542.00	102,138.00	152,680.00	419.26	419.26
012-254-028-000	513 JOYA DR	31,353.00	62,707.00	94,060.00	419.26	419.26
012-254-029-000	535 JOYA DR	45,276.00	91,610.00	136,886.00	419.26	419.26
012-254-030-000	557 JOYA DR	55,807.00	110,562.00	166,369.00	419.26	419.26
012-254-031-000	556 JOYA DR	60,616.00	122,278.00	182,894.00	419.26	419.26
012-254-032-000	534 JOYA DR	45,276.00	91,610.00	136,886.00	419.26	419.26
012-254-033-000	512 JOYA DR	45,276.00	91,610.00	136,886.00	419.26	419.26
012-254-034-000	494 JOYA DR	25,000.00	136,000.00	161,000.00	419.26	419.26
012-254-035-000	472 JOYA DR	51,258.00	103,257.00	154,515.00	419.26	419.26
012-254-036-000	460 JOYA DR	17,743.00	0.00	17,743.00	223.79	223.78
012-254-037-000	436 JOYA DR	17,743.00	0.00	17,743.00	223.79	223.78
012-254-038-000	414 JOYA DR	17,743.00	0.00	17,743.00	223.79	223.78
012-254-039-000	392 JOYA DR	17,743.00	0.00	17,743.00	223.79	223.78
012-254-040-000	380 JOYA DR	17,747.00	0.00	17,747.00	223.79	223.78
012-254-041-000	364 JOYA DR	17,747.00	0.00	17,747.00	223.79	223.78
012-254-042-000	348 JOYA DR	17,747.00	0.00	17,747.00	223.79	223.78
012-254-043-000	316 JOYA DR	17,747.00	0.00	17,747.00	223.79	223.78

City of Madera
Community Facilities District No. 2005-1 (Public Services)
Charge Detail Report (Sorted by Assessor's Parcel Number)

Assessor's Parcel Number	Situs Adresse	Assessed Land Values	Assessed Structure Values	Total Assessed Values	FY 16/17 Max Rate	FY 16/17 Charge
012-254-044-000	306 JOYA DR	17,747.00	0.00	17,747.00	223.79	223.78
012-254-045-000	307 BO TREE LN	17,747.00	0.00	17,747.00	223.79	223.78
012-254-046-000	317 BO TREE LN	17,747.00	0.00	17,747.00	223.79	223.78
012-254-047-000	345 BO TREE LN	17,747.00	0.00	17,747.00	223.79	223.78
012-254-048-000	361 BO TREE LN	17,747.00	0.00	17,747.00	223.79	223.78
012-254-049-000	379 BO TREE LN	17,747.00	0.00	17,747.00	223.79	223.78
012-254-050-000	395 BO TREE LN	17,747.00	0.00	17,747.00	223.79	223.78
012-254-051-000	411 BO TREE LN	17,747.00	0.00	17,747.00	223.79	223.78
012-254-052-000	433 BO TREE LN	17,747.00	0.00	17,747.00	223.79	223.78
012-254-053-000	463 BO TREE LN	17,747.00	0.00	17,747.00	223.79	223.78
012-254-054-000	475 BO TREE LN	17,747.00	0.00	17,747.00	223.79	223.78
012-254-055-000	497 BO TREE LN	17,747.00	0.00	17,747.00	223.79	223.78
012-254-056-000	517 BO TREE LN	17,747.00	0.00	17,747.00	223.79	223.78
012-254-057-000	539 BO TREE LN	17,747.00	0.00	17,747.00	223.79	223.78
012-254-058-000	561 BO TREE LN	17,747.00	0.00	17,747.00	223.79	223.78
012-254-059-000	1113 CRYSTAL WAY	17,747.00	0.00	17,747.00	223.79	223.78
012-254-060-000	1139 CRYSTAL WAY	17,747.00	0.00	17,747.00	223.79	223.78
012-254-061-000	1157 CRYSTAL WAY	17,747.00	0.00	17,747.00	223.79	223.78
012-254-062-000	1177 CRYSTAL WAY	17,747.00	0.00	17,747.00	223.79	223.78
012-254-063-000	1180 CRYSTAL WAY	20,000.00	0.00	20,000.00	223.79	223.78
012-254-064-000	1162 CRYSTAL WAY	20,000.00	0.00	20,000.00	223.79	223.78
012-254-065-000	1144 CRYSTAL WAY	20,000.00	0.00	20,000.00	223.79	223.78
012-254-066-000	486 BO TREE LN	17,747.00	0.00	17,747.00	223.79	223.78
012-254-067-000	470 BO TREE LN	17,747.00	0.00	17,747.00	223.79	223.78
012-254-068-000	448 BO TREE LN	17,747.00	0.00	17,747.00	223.79	223.78
012-254-069-000	420 BO TREE LN	17,747.00	0.00	17,747.00	223.79	223.78
012-254-070-000	1147 MAJESTIC WAY	17,747.00	0.00	17,747.00	223.79	223.78
012-254-071-000	1165 MAJESTIC WAY	20,000.00	0.00	20,000.00	223.79	223.78
012-254-072-000	1183 MAJESTIC WAY	20,000.00	0.00	20,000.00	223.79	223.78
012-254-073-000	1178 MAJESTIC WAY	20,000.00	0.00	20,000.00	223.79	223.78
012-254-074-000	1160 MAJESTIC WAY	20,000.00	0.00	20,000.00	223.79	223.78
012-254-075-000	1142 MAJESTIC WAY	20,000.00	0.00	20,000.00	223.79	223.78
012-254-076-000	380 BO TREE LN	20,000.00	0.00	20,000.00	223.79	223.78
012-254-077-000	362 BO TREE LN	20,000.00	0.00	20,000.00	223.79	223.78
012-254-078-000	346 BO TREE LN	20,000.00	0.00	20,000.00	223.79	223.78
012-254-079-000	312 BO TREE LN	20,000.00	0.00	20,000.00	419.26	419.26
012-254-080-000	1145 DIAMOND WAY	20,000.00	0.00	20,000.00	223.79	223.78
012-254-081-000	1163 DIAMOND WAY	20,000.00	0.00	20,000.00	223.79	223.78
012-254-082-000	1181 DIAMOND WAY	20,000.00	0.00	20,000.00	223.79	223.78
012-460-006-000		225,250.00	7,500.00	232,750.00	419.26	419.26
012-470-001-000	1699 MUNRAS AVE	55,073.00	106,533.00	161,606.00	419.26	419.26
012-470-002-000	1693 MUNRAS AVE	23,200.00	0.00	23,200.00	223.79	223.78
012-470-003-000	1687 MUNRAS AVE	23,200.00	0.00	23,200.00	223.79	223.78
012-470-004-000	1681 MUNRAS AVE	23,200.00	0.00	23,200.00	223.79	223.78
012-470-005-000	1675 MUNRAS AVE	23,200.00	0.00	23,200.00	223.79	223.78
012-470-006-000	1663 MUNRAS AVE	23,200.00	0.00	23,200.00	223.79	223.78
012-470-007-000	1659 MUNRAS AVE	23,200.00	0.00	23,200.00	223.79	223.78
012-470-008-000	1647 MUNRAS AVE	36,579.00	88,835.00	125,414.00	419.26	419.26
012-470-009-000	1635 MUNRAS AVE	45,276.00	95,929.00	141,205.00	419.26	419.26
012-470-010-000	1621 MUNRAS AVE	64,469.00	138,380.00	202,849.00	419.26	419.26
012-470-011-000	1601 MUNRAS AVE	44,940.00	94,894.00	139,834.00	419.26	419.26
012-470-012-000	1599 MUNRAS AVE	49,130.00	93,855.00	142,985.00	419.26	419.26
012-470-013-000	1591 MUNRAS AVE	30,738.00	126,029.00	156,767.00	419.26	419.26
012-470-014-000	1583 MUNRAS AVE	46,198.00	91,958.00	138,156.00	419.26	419.26
012-470-015-000	1571 MUNRAS AVE	36,765.00	74,583.00	111,348.00	419.26	419.26
012-470-016-000	1555 MUNRAS AVE	46,436.00	92,820.00	139,256.00	419.26	419.26
012-470-017-000	1537 MUNRAS AVE	30,136.00	100,454.00	130,590.00	419.26	419.26
012-470-018-000	1519 MUNRAS AVE	38,959.00	78,972.00	117,931.00	419.26	419.26
012-470-019-000	1501 MUNRAS AVE	54,562.00	108,857.00	163,419.00	419.26	419.26
012-470-020-000	647 SAN ANGELO AVE	40,759.00	82,146.00	122,905.00	419.26	419.26
012-470-021-000	667 SAN ANGELO AVE	45,805.00	92,284.00	138,089.00	419.26	419.26
012-470-022-000	687 SAN ANGELO AVE	57,280.00	115,409.00	172,689.00	419.26	419.26
012-470-023-000	727 SAN ANGELO AVE	40,759.00	82,564.00	123,323.00	419.26	419.26
012-470-024-000	747 SAN ANGELO AVE	20,090.00	104,974.00	125,064.00	419.26	419.26
012-470-025-000	767 SAN ANGELO AVE	40,305.00	124,000.00	164,305.00	419.26	419.26
012-470-026-000	787 SAN ANGELO AVE	51,273.00	103,739.00	155,012.00	419.26	419.26
012-470-027-000	788 SAN ANGELO AVE	62,145.00	125,365.00	187,510.00	419.26	419.26
012-470-028-000	768 SAN ANGELO AVE	44,059.00	88,835.00	132,894.00	419.26	419.26
012-470-029-000	748 SAN ANGELO AVE	30,738.00	90,167.00	120,905.00	419.26	419.26
012-470-030-000	728 SAN ANGELO AVE	25,113.00	105,476.00	130,589.00	419.26	419.26
012-470-031-000	688 SAN ANGELO AVE	43,394.00	86,740.00	130,134.00	419.26	419.26
012-470-032-000	668 SAN ANGELO AVE	47,030.00	96,046.00	143,076.00	419.26	419.26
012-470-033-000	648 SAN ANGELO AVE	45,170.00	91,390.00	136,560.00	419.26	419.26
012-470-034-000	649 BERNARDI AVE	51,062.00	101,339.00	152,401.00	419.26	419.26

City of Madera
Community Facilities District No. 2005-1 (Public Services)
Charge Detail Report (Sorted by Assessor's Parcel Number)

Assessor's Parcel Number	Situs Adresse	Assessed Land Values	Assessed Structure Values	Total Assessed Values	FY 16/17 Max Rate	FY 16/17 Charge
012-470-035-000	669 BERNARDI AVE	36,853.00	73,708.00	110,561.00	419.26	419.26
012-470-036-000	689 BERNARDI AVE	38,865.00	78,785.00	117,650.00	419.26	419.26
012-470-037-000	729 BERNARDI AVE	30,738.00	94,266.00	125,004.00	419.26	419.26
012-470-038-000	749 BERNARDI AVE	54,753.00	108,457.00	163,210.00	419.26	419.26
012-470-039-000	769 BERNARDI AVE	45,193.00	90,337.00	135,530.00	419.26	419.26
012-470-040-000	789 BERNARDI AVE	19,873.00	118,292.00	138,165.00	419.26	419.26
012-470-041-000	790 BERNARDI AVE	52,647.00	105,298.00	157,945.00	419.26	419.26
012-470-042-000	770 BERNARDI AVE	39,714.00	80,473.00	120,187.00	419.26	419.26
012-470-043-000	750 BERNARDI AVE	46,914.00	93,776.00	140,690.00	419.26	419.26
012-470-044-000	730 BERNARDI AVE	45,276.00	91,610.00	136,886.00	419.26	419.26
012-470-045-000	690 BERNARDI AVE	9,409.00	80,394.00	89,803.00	419.26	419.26
012-470-046-000	670 BERNARDI AVE	25,113.00	95,431.00	120,544.00	419.26	419.26
012-470-047-000	650 BERNARDI AVE	62,052.00	124,554.00	186,606.00	419.26	419.26
012-470-048-000	651 SAN ANDREA AVE	21,542.00	143,615.00	165,157.00	419.26	419.26
012-470-049-000	671 SAN ANDREA AVE	23,200.00	0.00	23,200.00	419.26	419.26
012-470-050-000	691 SAN ANDREA AVE	33,614.00	66,073.00	99,687.00	419.26	419.26
012-470-051-000	731 SAN ANDREA AVE	29,000.00	134,560.00	163,560.00	419.26	419.26
012-470-052-000	751 SAN ANDREA AVE	32,651.00	141,815.00	174,466.00	419.26	419.26
012-470-053-000	771 SAN ANDREA AVE	20,090.00	130,590.00	150,680.00	419.26	419.26
012-470-054-000	791 SAN ANDREA AVE	23,200.00	0.00	23,200.00	419.26	419.26
012-470-055-000	792 SAN ANDREA AVE	23,200.00	0.00	23,200.00	419.26	419.26
012-470-056-000	772 SAN ANDREA AVE	57,913.00	115,827.00	173,740.00	419.26	419.26
012-470-057-000	752 SAN ANDREA AVE	23,200.00	0.00	23,200.00	419.26	419.26
012-470-058-000	732 SAN ANDREA AVE	23,200.00	0.00	23,200.00	223.79	223.78
012-470-059-000	692 SAN ANDREA AVE	62,053.00	124,811.00	186,864.00	419.26	419.26
012-470-060-000	672 SAN ANDREA AVE	30,779.00	105,196.00	135,975.00	419.26	419.26
012-470-061-000	652 SAN ANDREA AVE	38,959.00	76,866.00	115,825.00	419.26	419.26
012-470-062-000	653 SAN MARCO AVE	57,508.00	115,287.00	172,795.00	419.26	419.26
012-470-063-000	673 SAN MARCO AVE	23,200.00	0.00	23,200.00	223.79	223.78
012-470-064-000	693 SAN MARCO AVE	23,200.00	0.00	23,200.00	223.79	223.78
012-470-065-000	733 SAN MARCO AVE	23,200.00	0.00	23,200.00	223.79	223.78
012-470-066-000	753 SAN MARCO AVE	23,200.00	0.00	23,200.00	223.79	223.78
012-470-067-000	773 SAN MARCO AVE	62,124.00	123,198.00	185,322.00	419.26	419.26
012-470-068-000	793 SAN MARCO AVE	20,000.00	0.00	20,000.00	223.79	223.78
012-470-069-000	794 SAN MARCO AVE	23,200.00	0.00	23,200.00	223.79	223.78
012-470-070-000	774 SAN MARCO AVE	32,651.00	157,572.00	190,223.00	419.26	419.26
012-470-071-000	754 SAN MARCO AVE	23,200.00	0.00	23,200.00	223.79	223.78
012-470-072-000	734 SAN MARCO AVE	23,200.00	0.00	23,200.00	223.79	223.78
012-470-073-000	694 SAN MARCO AVE	23,200.00	0.00	23,200.00	223.79	223.78
012-470-074-000	674 SAN MARCO AVE	23,200.00	0.00	23,200.00	223.79	223.78
012-470-075-000	654 SAN MARCO AVE	23,200.00	0.00	23,200.00	223.79	223.78
012-470-076-000	655 SAINT MARY AVE	23,200.00	0.00	23,200.00	223.79	223.78
012-470-077-000	675 SAINT MARY AVE	23,200.00	0.00	23,200.00	223.79	223.78
012-470-078-000	695 SAINT MARY AVE	23,200.00	0.00	23,200.00	223.79	223.78
012-470-079-000	735 SAINT MARY AVE	23,200.00	0.00	23,200.00	223.79	223.78
012-470-080-000	755 SAINT MARY AVE	21,542.00	112,840.00	134,382.00	419.26	419.26
012-470-081-000	775 SAINT MARY AVE	21,542.00	112,840.00	134,382.00	419.26	419.26
012-470-082-000	795 SAINT MARY AVE	21,542.00	112,840.00	134,382.00	419.26	419.26
Total:						\$ 331,242.12
Parcel Count:						936

EXHIBIT B

CITY OF MADERA COMMUNITY FACILITIES DISTRICT NO. 2005-1 (PUBLIC SERVICES)

Boundary Diagram

SHEET 1 OF 4

AMENDED BOUNDARY MAP OF CITY OF MADERA
COMMUNITY FACILITIES DISTRICT NO. 2005-1
(PUBLIC SERVICES)

CITY OF MADERA
COUNTY OF MADERA
STATE OF CALIFORNIA

THE AMENDED BOUNDARY MAP SUPERSEDES AND REPLACES IN ITS ENTIRETY THE BOUNDARY MAP PROVIDED HEREON IN SECTION 4 OF SAID MAP OF ASSIGNMENTS AND COMMUNITY FACILITIES DISTRICTS IN PARCEL NO. 2005-01, IN THE OFFICE OF THE COUNTY RECORDER FOR THE COUNTY OF MADERA, STATE OF CALIFORNIA, ON OCTOBER 1, 2005.

FILED IN THE OFFICE OF THE CITY CLERK THIS _____ DAY OF _____, 2005.

I HEREBY CERTIFY THAT THE ABOVE MAP SHOWING PROPOSED BOUNDARIES OF CITY OF MADERA COMMUNITY FACILITIES DISTRICT NO. 2005-1, IN THE OFFICE OF THE COUNTY RECORDER FOR THE COUNTY OF MADERA, STATE OF CALIFORNIA, BY THE CITY CLERK, OF THE CITY OF MADERA, AT A PUBLIC HEARING, HELD ON THE _____ DAY OF _____, 2005, BY ITS RESOLUTION NO. _____.

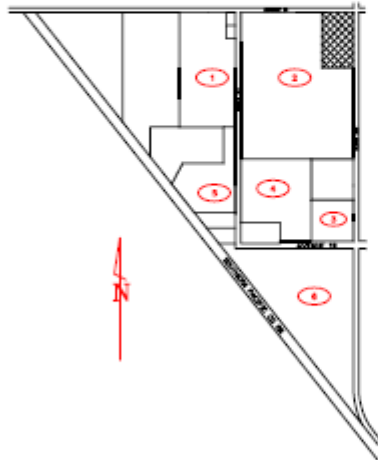
CITY CLERK
CITY OF MADERA

FILED THIS _____ DAY OF _____, 2005, AT THE HOUR OF _____ OF THE AFTERNOON, IN THE OFFICE OF THE COUNTY RECORDER FOR THE COUNTY OF MADERA, STATE OF CALIFORNIA.

COUNTY RECORDER
COUNTY OF MADERA
STATE OF CALIFORNIA

THE LINES AND DIMENSIONS OF EACH LOT OR PARCEL SHOWN ON THIS DRAWING SHALL BE FINAL, LINES AND DIMENSIONS AS SHOWN ON THE MADERA COUNTY ASSIGNMENTS MAPS FOR THESE PARCELS LISTED.

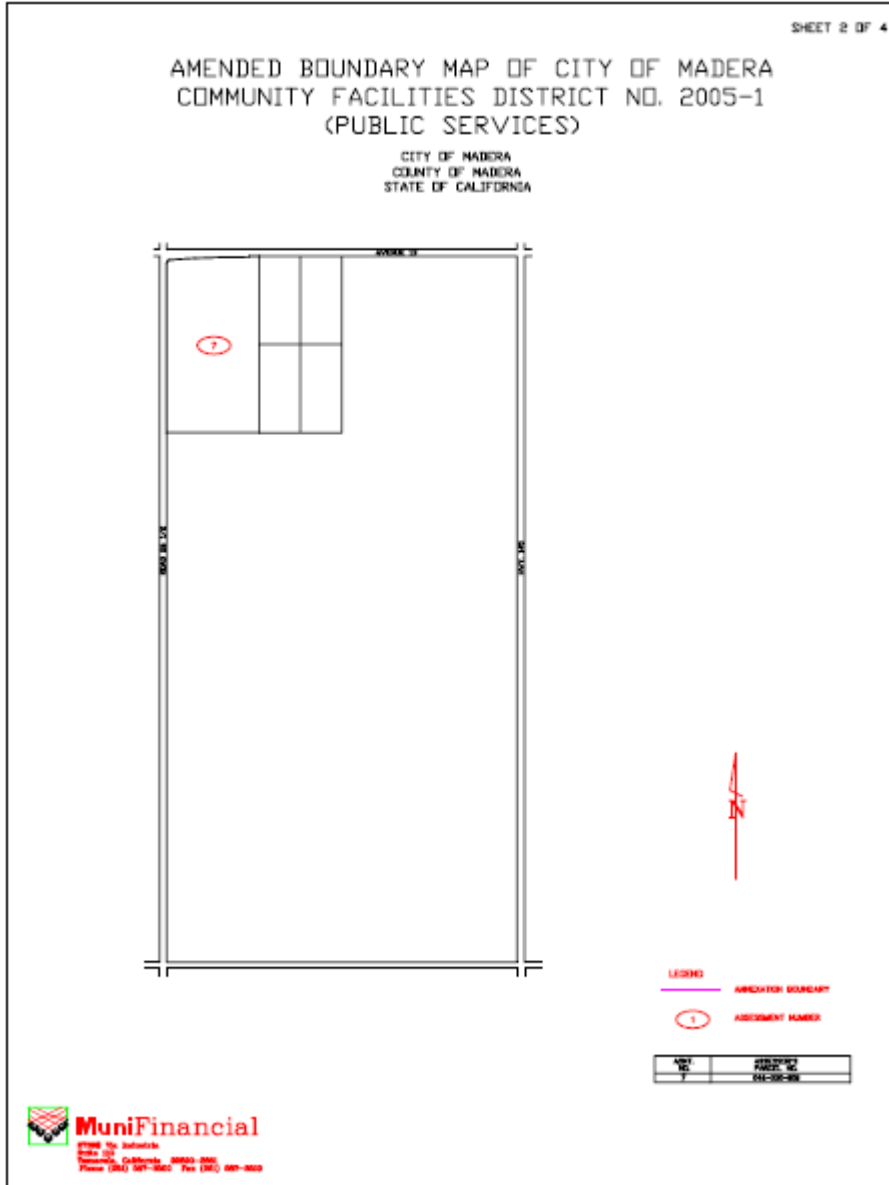
THE MADERA COUNTY ASSIGNMENTS MAPS SHALL GOVERN FOR ALL DETAILS CONCERNING THE LINES AND DIMENSIONS OF EACH LOT OR PARCEL.

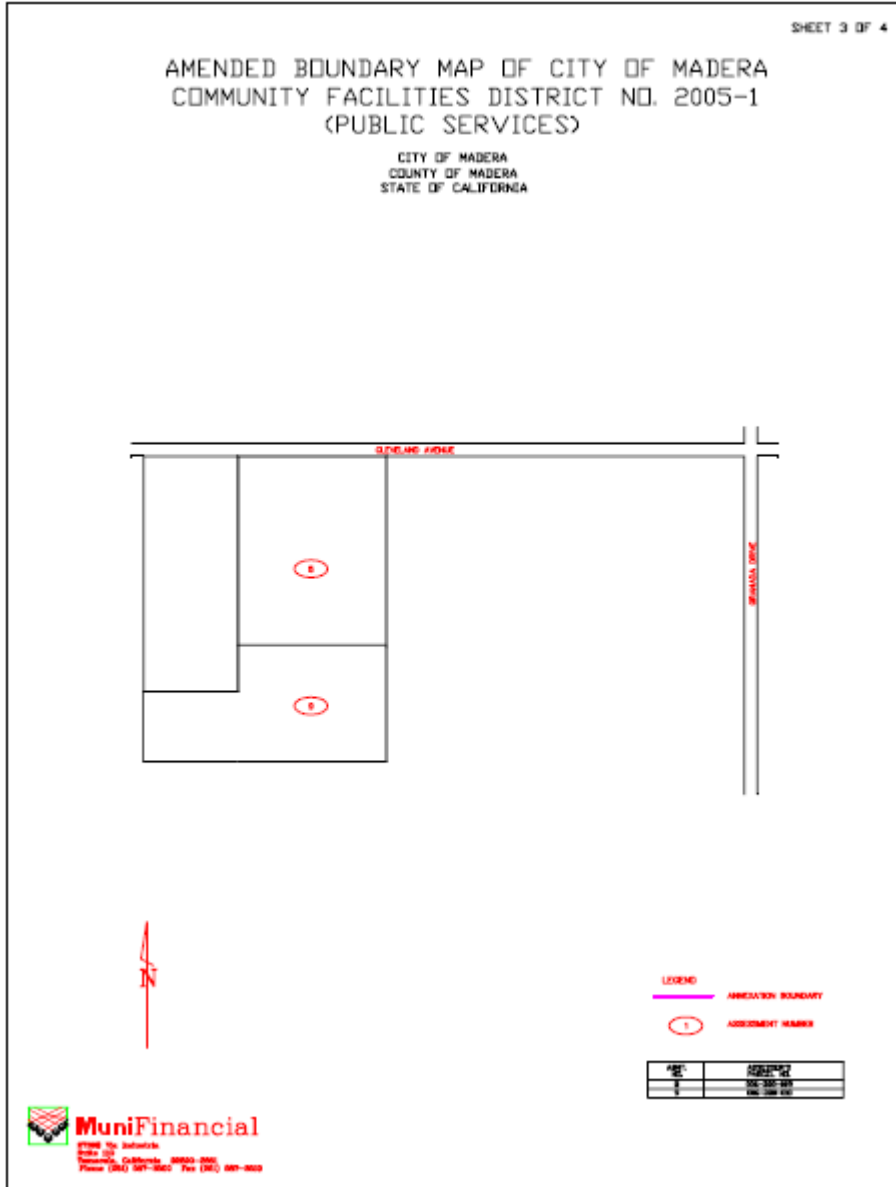


- LEGEND:**
- AMENDED BOUNDARY
 - ① ASSIGNMENT NUMBER
 - NOT A PART OF

LOT	ASSIGNMENT NUMBER
1	2005-01
2	2005-02
3	2005-03
4	2005-04
5	2005-05
6	2005-06



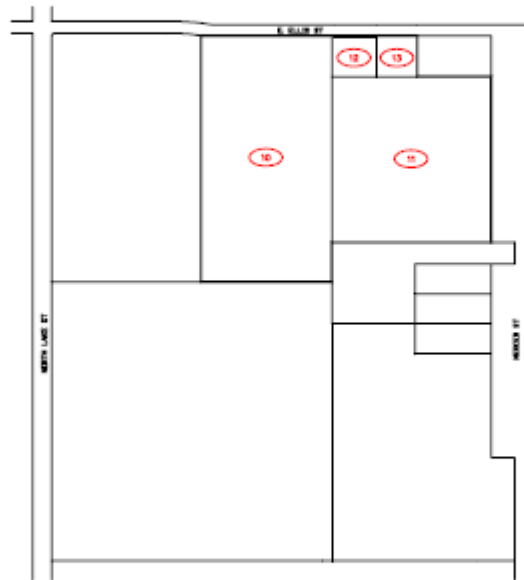




SHEET 4 OF 4

AMENDED BOUNDARY MAP OF CITY OF MADERA
COMMUNITY FACILITIES DISTRICT NO. 2005-1
(PUBLIC SERVICES)

CITY OF MADERA
COUNTY OF MADERA
STATE OF CALIFORNIA



LEGEND
 AMENDATION BOUNDARY
 ASSESSMENT NUMBER

ASSESSMENT NUMBER	ASSESSMENT NAME
10	...
11	...
12	...
13	...

 **MuniFinancial**
 47000 Via Antelope
 Suite 100
 Merced, California 95360-0000
 Phone (209) 527-3600 Fax (209) 527-3600

EXHIBIT C

CITY OF MADERA COMMUNITY FACILITIES DISTRICT NO. 2005-1 (PUBLIC SERVICES)

Delinquency Summary

DELINQUENCY SUMMARY BY DISTRICT

City of Madera

Community Facilities District No. 2005-1 (Public Services)

DUE DATE	DOLLARS LEVIED	DOLLARS DELINQUENT	% DOLLARS DELINQUENT	PARCELS LEVIED	PARCELS DELINQUENT	DATA DATE
2013/14-1	\$134,759.55	\$1,727.69	1.28%	906	16	05/16/2016
2013/14-2	134,759.55	1,727.69	1.28%	906	16	05/16/2016
2014/15-1	131,762.91	3,057.38	2.32%	906	22	05/16/2016
2014/15-2	131,762.91	3,162.85	2.40%	906	23	05/16/2016
2015/16-1	158,771.40	3,257.61	2.05%	920	23	05/16/2016
2015/16-2	158,771.40	6,434.07	4.05%	920	47	05/16/2016
TOTAL	\$850,587.72	\$19,367.29	2.28%			

Calculations performed on 12/5/2016 9:26:00PM