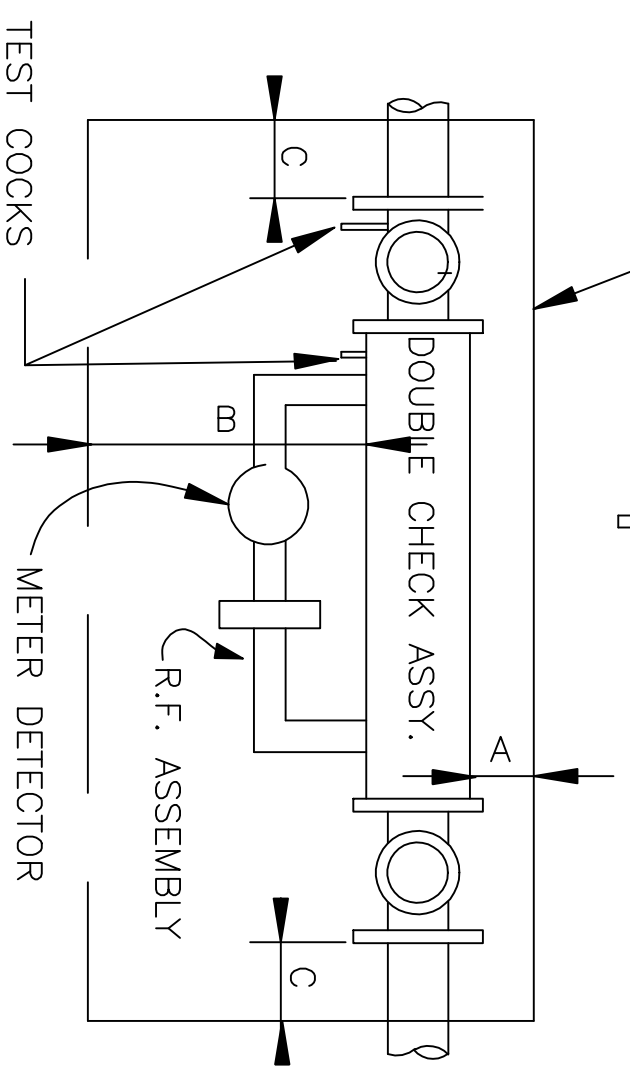


6 MIN. CLEARANCE

SIZE DC	A	B	C
1" TO 3"	12"	24"	12"
4" & UP	24"	24"	12"



TOP VIEW

GENERAL NOTES:

1. BACKFLOW PREVENTER MUST BE ACCESSIBLE FOR TESTING AND INSTALLED NEAR PROPERTY LINE DOWNSTREAM OF METER.
2. NO TAPS, TEES OR CONNECTIONS OF ANY KIND ARE PERMITTED BETWEEN THE WATER METER AND THE BACKFLOW ASSEMBLY.
3. PROTECTION FROM FREEZE DAMAGE MAY BE REQUIRED IN EXPOSED AREAS.
4. ASSEMBLY MUST BE ACCESSIBLE FOR TESTING AND MAINTENANCE PER MADERA MUNICIPAL CODE.
5. ASSEMBLY TO BE THE SAME SIZE AS THE WATER SUPPLY LINE PER UNIFORM PLUMBING CODE.
6. PRESSURE LOSS THROUGH ASSEMBLY MUST BE INCLUDED IN PRESSURE LOSS CALCULATIONS FOR SIZING OF THE WATER SYSTEM PER UNIFORM PLUMBING CODE.
7. MINIMUM CLEARANCES AROUND ASSEMBLY MUST BE MAINTAINED. REFER TO MINIMUM CLEARANCE CHART ON THIS PAGE.
8. INSTALL A MINIMUM OF ONE UNION IN THE PIPING SYSTEM WITHIN 12 INCHES OF THE ASSEMBLY – 3/4 THRU 2" SIZES.
9. DRAINAGE TO EXTERIOR OF THE BUILDING IS REQUIRED WHEN ASSEMBLY IS INSTALLED INSIDE.
10. ALL DOUBLE CHECK BACKFLOW PREVENTION ASSEMBLIES MUST BE APPROVED BY CA DEPARTMENT OF HEALTH SERVICES.

**DOUBLE CHECK DETECTOR  
ASSEMBLY (DCDA) BACKFLOW  
PREVENTOR CLASS I – II**

REF. & REV.  
MARCH 2005  
MAY 2007

CITY OF MADERA

**W-16**