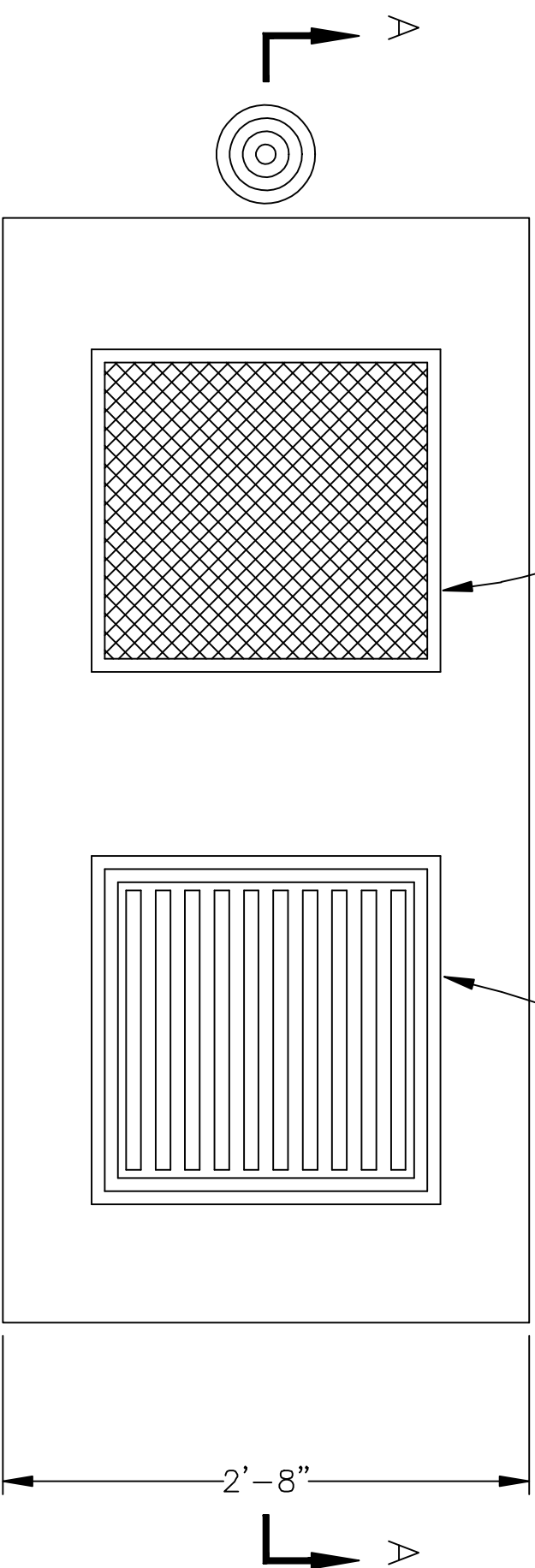
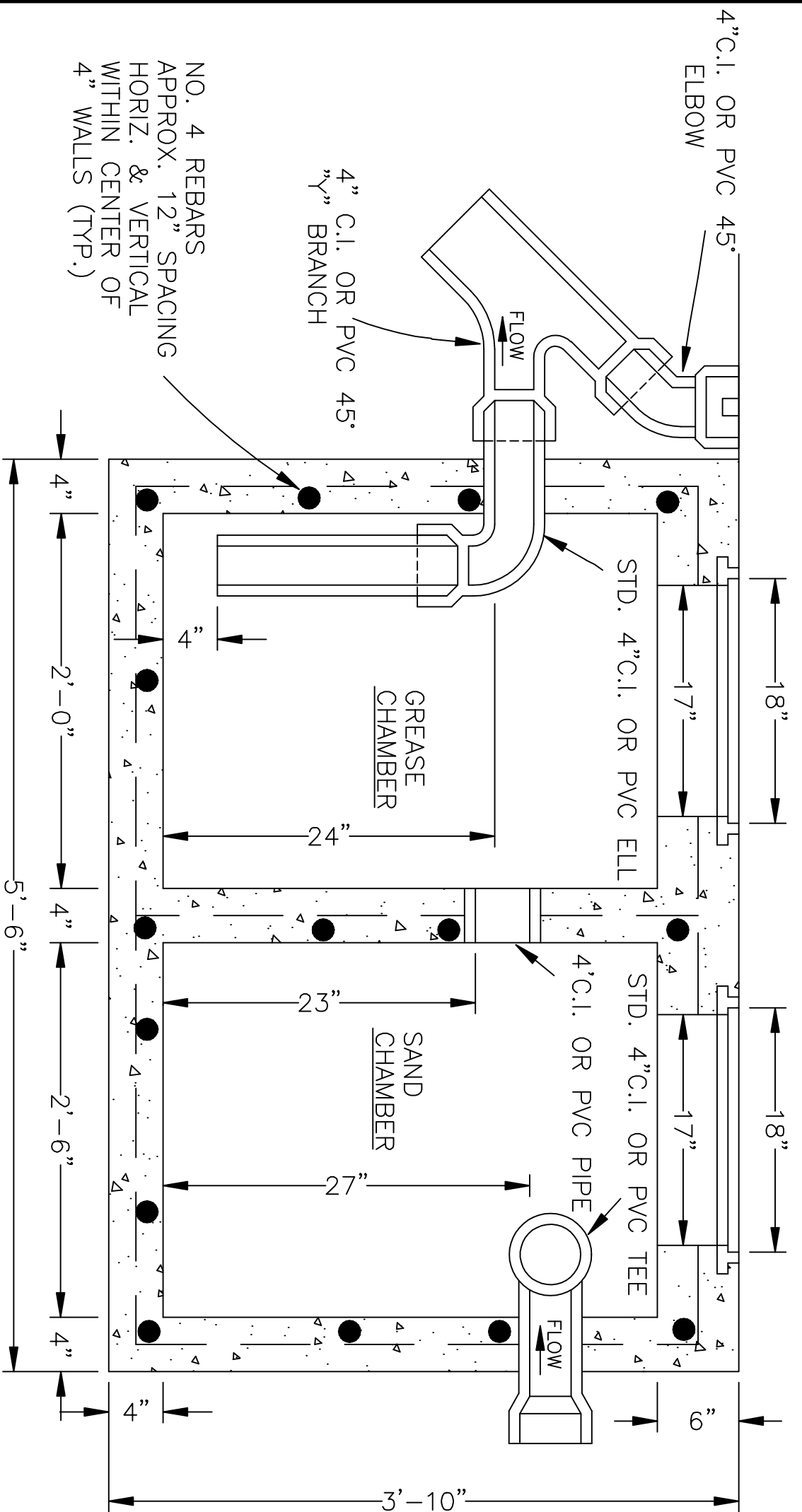


SOLID COVER &  
 FRAME. 18" x 18"; NO. A2015,  
 STANDARD COVER OR NO. A2017,  
 TRAFFIC COVER; OR APPROVED  
 EQUAL.



ALHAMBRA FDRY. GRATING &  
 FRAME. 18" x 18"; NO. A2010,  
 STANDARD GRATING OR NO. A2012,  
 TRAFFIC GRATING; OR APPROVED  
 EQUAL.

**PLAN**



SECTION A-A

NOTES

1. DIMENSIONS SHOWN ARE MINIMUM.  
 PROPER SIZING TO BE DETERMINED  
 BY CALCULATION, SUBJECT TO APPROVAL  
 OF CITY ENGINEER.
2. RESPONSIBILITY FOR CLEANING &  
 MAINTENANCE BELONGS TO THE  
 PROPERTY OWNER.
3. AN ALTERNATE GREASE INTERCEPTOR DEVICE  
 OF STANDARD MANUFACTURE MAY BE SUBSTITUTED  
 FOR THAT SHOWN ABOVE, SUBJECT TO APPROVAL.

THIS STANDARD APPLIES TO:

- a. RESTAURANTS
- b. AUTOMOTIVE GARAGES

**SAND AND GREASE  
 INTERCEPTOR**

REF. & REV.  
 MARCH 2005  
 AUG. 2008

CITY OF MADERA

**S-11**