

**RFP: ADA Self Evaluation and Transition Plan Update  
Submitted Questions/Answers from City**

**Question 1:** How many parking stalls are in the downtown area?

**Answer 1:** 269 on-street stalls maintained by the City in the downtown area, with additional City owned parking lots located as follows: D Street & 6<sup>th</sup> Street, 114-118 North D Street, 115 South C Street, 117 South D Street, and E Street between Yosemite and East 5<sup>th</sup> Street.

**Question 2:** How many signalized intersections does the City have?

**Answer 2:** 30 City-owned with 4 additional in the works

**Question 3:** How many curb cuts/ramps does the City have?

**Answer 3:** This data is not tracked at this time.

**Question 4:** How many linear feet/miles of sidewalk are in the City?

**Answer 4:** The City does not have this information yet. Our Engineering department has begun work on a KMZ file provided with this addendum. Work on the file started in the downtown area and reaches outward, but as you can see on the file, is not complete.

**Question 5:** What is the acreage/mileage of City park and trail facilities?

**Answer 5:** Please see facility list for names; site information can be found at <https://www.madera.gov/home/departments/parks-community-services/parks-trails/>; additional amenity information exists in the previous ADA SETP which can be found at <https://www.madera.gov/ada>

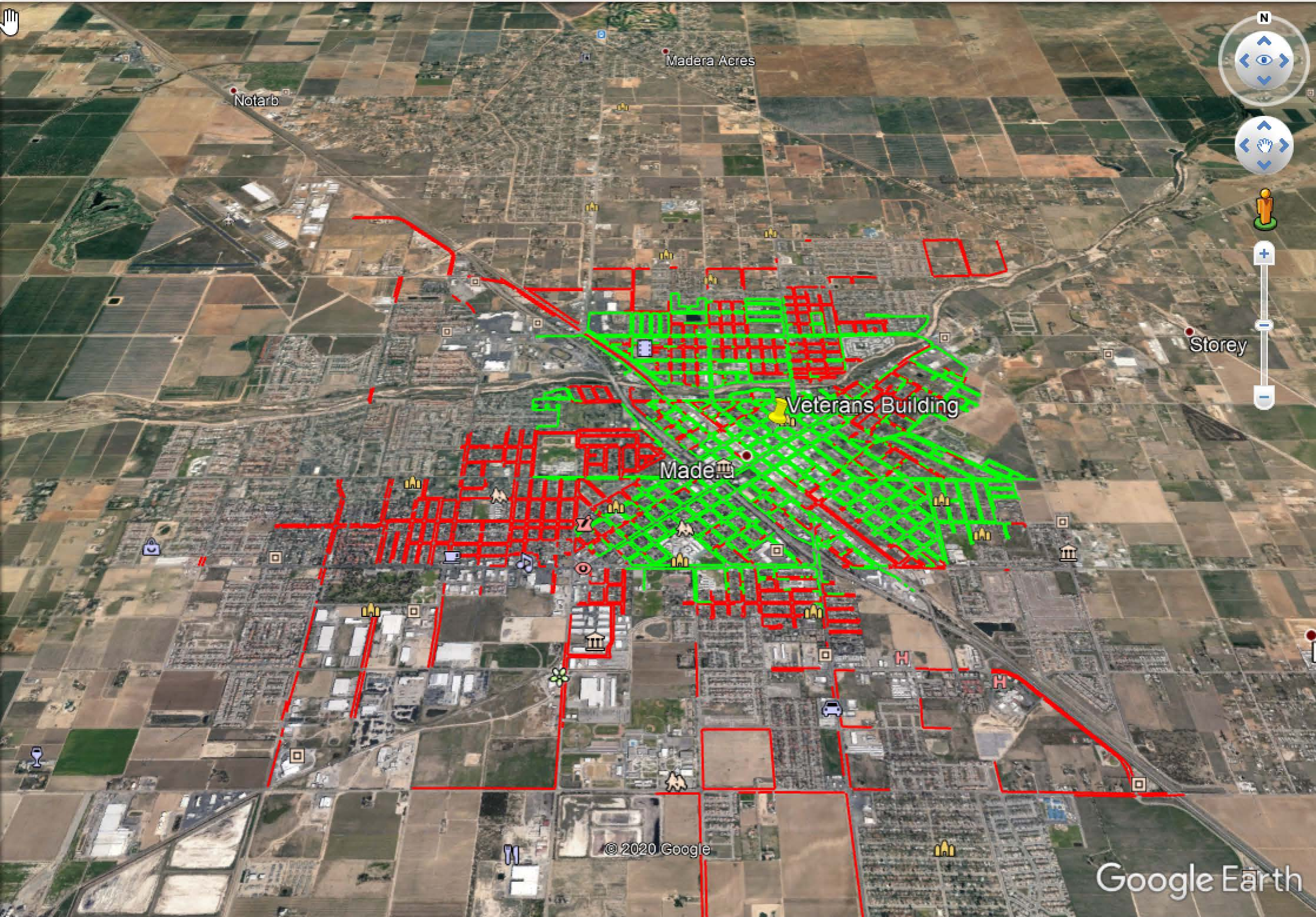
**Question 6:** What is the square footage of each City facility?

**Answer 6:** Please see updated facility list. Some sites have multiple buildings, so square footage is not available. However, Google maps satellite view shows the facility and related building should you wish to get a feel for the layout of the property; addresses are on the list of facilities.

<b>Facility Name</b>	<b>Address</b>	<b>Square Footage</b>
City Hall	205 W. 4th Street	18,055
Frank Bergon Senior Center	238 S. D Street	4,166
Corporation Yard	1030 S. Gateway Drive	Various Bldgs
Fire Station 56	317 N. Lake Street	6,863
Fire Station 57	200 S. Schnoor	6,853
Madera Municipal Airpot	4020 Aviation Drive	Various Bldgs
Centennial Park Swimming Pool	221 Flume Street	Various Bldgs and Pool area
Wastewater Treatment Plant	13048 Road 21 1/2	7,319
Madera Municipal Golf Course	23200 Avenue 17	Various Bldgs and Course
Intermodal Facility	123 North E Street	2,840
Parks Maintenance Office	40 W. Olive	1,074
Westside Community Center	1124 W. Yosemite Avenue	2,135
Rotary Youth Hut	113 South Q. Street	1,903
Mexican-American Center	716 Columbia Ave	1,940
Pan-Am Community Center	703 E. Sherwood Way	12,016
Old Train Depot	120 N. E Street	2,015
Police Department	330 South C Street	Various Bldgs
John Wells Youth Center	701 E. 5th Street	24,443
Community Development Offices	428 E. Yosemite Avenue	7,200
Fire Station 58	2558 Condor Drive	8,933
Transit Center	1951 Independence Drive	3,251
McNally Park	825 South A Street	
Rotary Park	800 N. Gateway Drive	
Madera Sunrise Rotary Sports Complex	1901 Clinton Avenue	
Lions Town & Country Park	2300 Howard Road	
Pan Am Park	703 E. Sherwood Way	
Centennial Park	701 E. 5th Street	
Community Garden	621 E. 4th Street	
Granada Linear Park	Granada Avenue, between Glade and Cleveland	
Knox Park	Corner of Knox & A Streets	
Laurel Trail	Laurel Street, North of Sunset Avenue	
Maple Court	T-Intersection of Maple Court and Maple Street	
Millview Gymnasium	1901 Clinton Street	

<b>Facility Name</b>	<b>Address</b>	<b>Square Footage</b>
Olive Outlots	Olive Avenue & Grove Street	
Riverside Park	Riverside Drive, between N. D Street and Lake Street	
Riverview	North side of Riverview Drive, just west of Hwy 99	
Sharon Avenue Linear Park	Sharon Avenue, between Cleveland and Riverside Drive	
Sunset Park	Sunset Avenue and Accornero Street	
Vernon McCullough Fresno River Trail	Along Fresno River	
Senior Nutrition Kitchen	1901 Clinton Street	





Navigation controls including a compass, a Street View pegman, and a vertical zoom slider with '+' and '-' buttons.

© 2020 Google

Google Earth